



Enterprise Asset Management for the Public Sector

Empowering people who serve the public®

How does enterprise asset management improve public sector operations?

Tyler Technologies has developed an enterprise asset management solution specifically designed to meet the complex needs of public sector organizations. Tyler EAM™ provides a complete view of your organization's infrastructure and direct interaction with your constituents, providing integrated transparency to support your community and its goals.

The management of an organizational infrastructure is never limited to the asset itself, but rather the complete view of the asset and how it functions as part of the greater infrastructure. Tyler EAM is the only solution that offers a complete view of your assets, from procurement to retirement and all maintenance required through the life of those assets.

Tyler EAM is an enterprise solution designed to help public sector organizations achieve both tactical, short-term goals and strategic, long-term goals by leveraging connections to financial, planning, incident management, and customer-based data throughout your organization to streamline work processes and quantify the value you receive from your assets.



Asset Maintenance

Asset Maintenance enables you to track and maintain assets effectively, increasing the reliability of physical assets, enhancing predictive maintenance, and providing configurability to address your most important asset management challenges.

Designed for the field and office, this tool maximizes your field-focused workforce using web-enabled programs as well as iPhone® and Android® mobile apps, allowing workers in the field to easily see their work, complete work orders on assets, manage inventory, and allocate resources from anywhere at any time.

Asset Performance

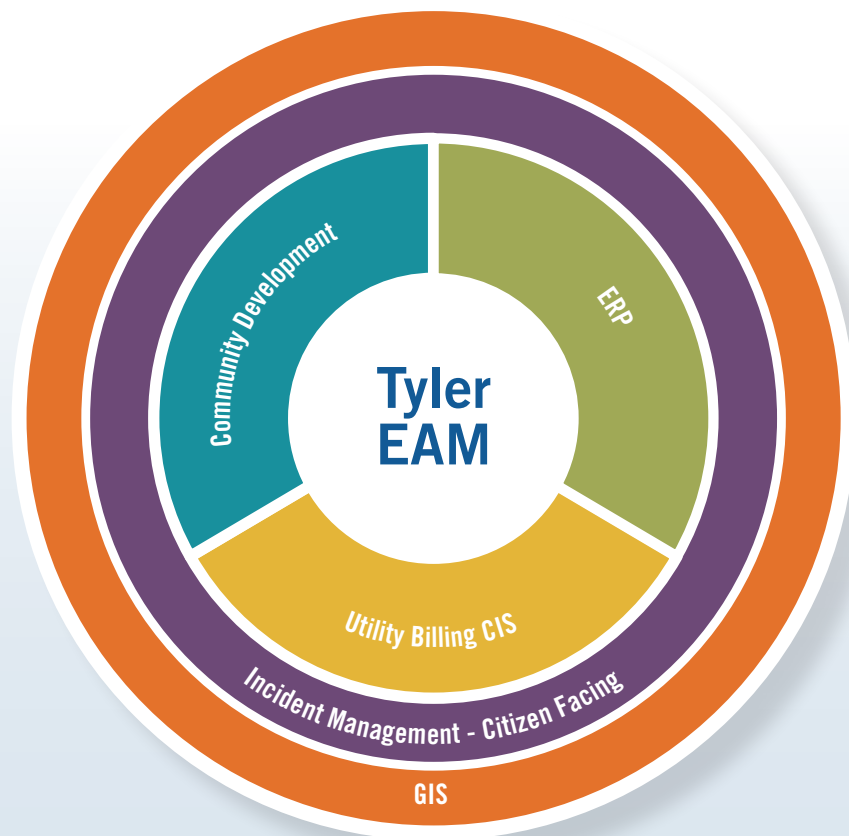
Asset Performance provides insight into the health of your assets and helps asset managers plan, prioritize, and budget for future work that will maximize the ROI from those assets. This application empowers your organization by intuitively surfacing key asset-related data and provides robust analytical tools to support informed asset management decision making.

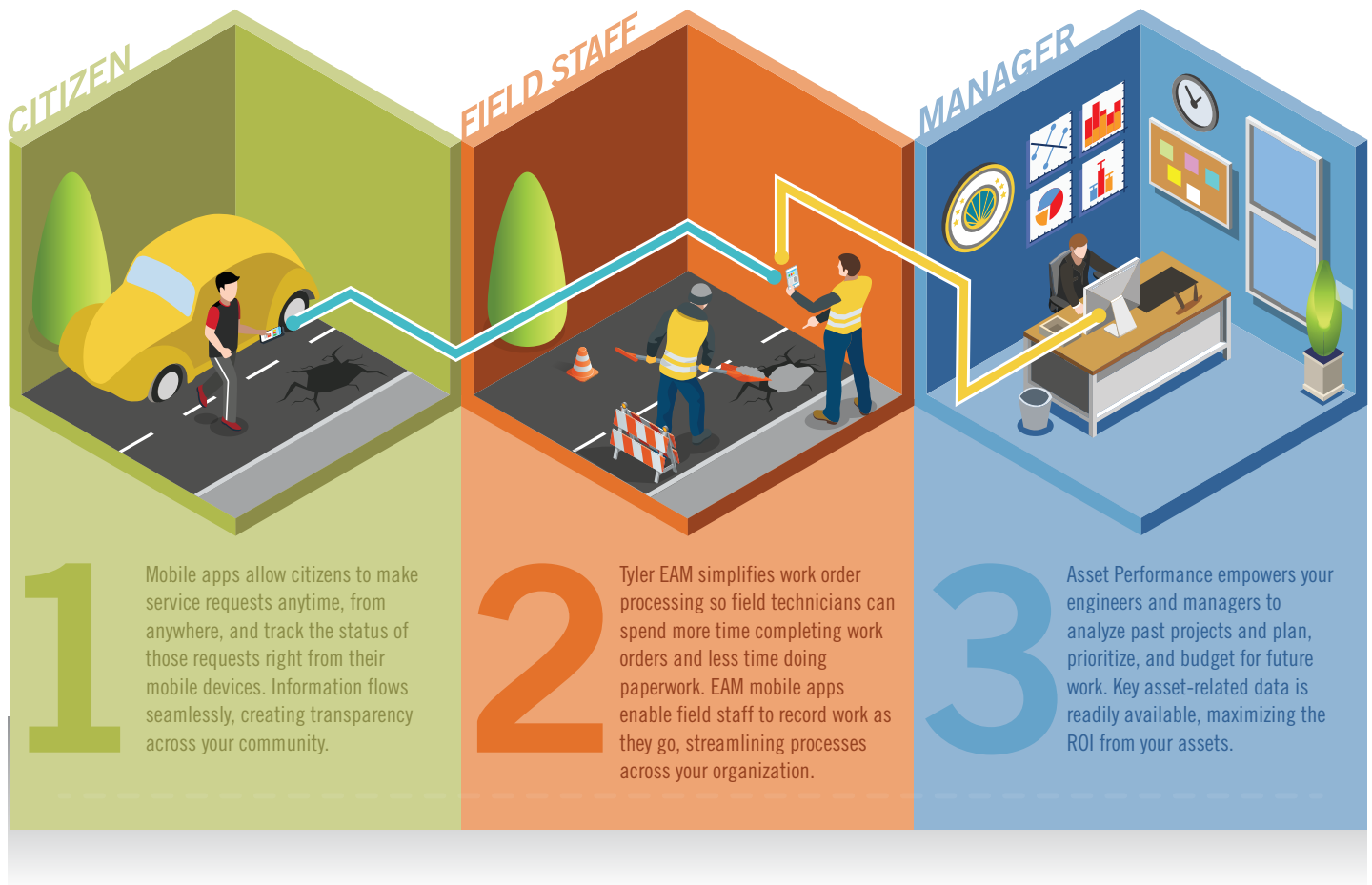
GIS

Tyler GIS enabled applications utilize Esri® ArcGIS tools, and offer dynamic maps and geographic information system (GIS) data and services via the web, allowing cities and local government to publish, discover, and share GIS information. Tyler GIS enabled applications allow you to view layers of GIS information on assets' associated information, such as work orders. With appropriate permissions, you can view, create, edit, and delete assets, as well as view the GIS attributes, work history, and create new work orders right from the map. Tyler GIS is designed to integrate with your organization's existing ArcGIS server and is accessible from all Tyler GIS enabled applications.

Tools for today to plan for tomorrow

- Track, rate, and manage your assets with detailed inventory and condition assessments
- Schedule preventative maintenance and extend life of assets
- Review work orders and update them as completed
- Proactively manage infrastructure assets
- Plan and monitor unexpected and expected work activities, from initial request through completion
- Manage critical business processes using a configurable dashboard
- Make informed decisions to repair, refurbish, or replace an asset
- Determine viability of assets with operational analytics
- Make decisions on how to best use resources





Maximize Efficiency with Integrated Solutions

As a public sector organization, you need an intuitive solution for managing asset data and maintenance activities. Tyler EAM is a mobile enabled, GIS-centric maintenance management solution that is optimized for use in both the office and in the field. From citizen to technician and back again, Tyler EAM offers insight to all stakeholders in both your organization and community.

Fully integrated with Tyler enterprise solutions, Tyler EAM works seamlessly with your ERP, community development, and citizen portals to increase your productivity, enhance your reporting and analytics, streamline your decision making, and connect your community.

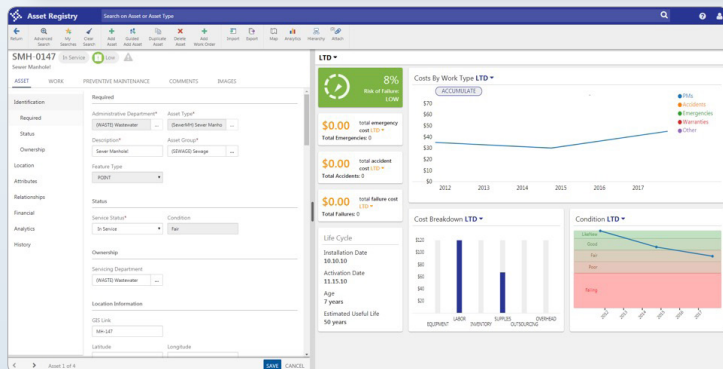
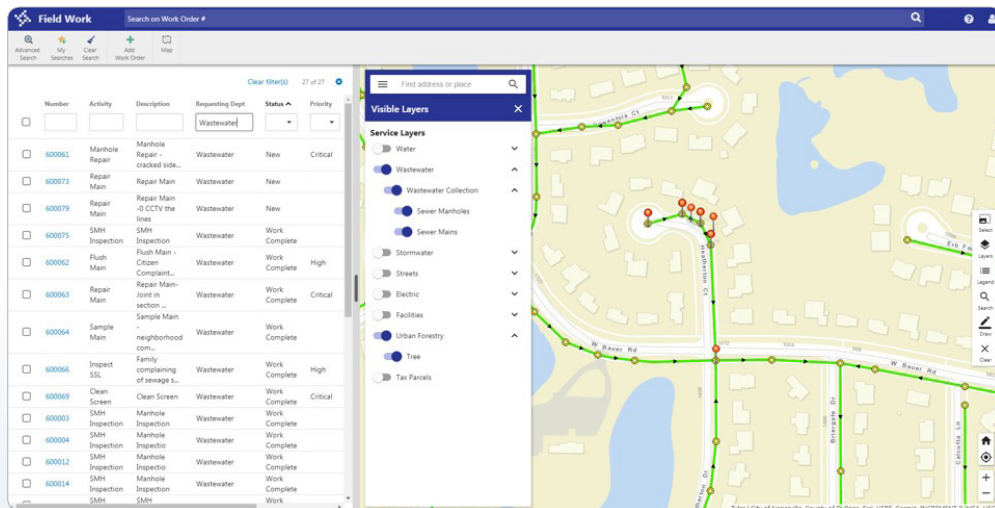
Flexible Technology

Tyler solutions are designed to make the public sector more efficient. That means putting the right technology in your hands. Tyler Hub™ monitors key processes and quickly executes routine tasks, workers in the field use mobile apps, your IT team has cloud hosting with built in disaster recovery, and more. Tyler gives you what you need to get the job done, well.

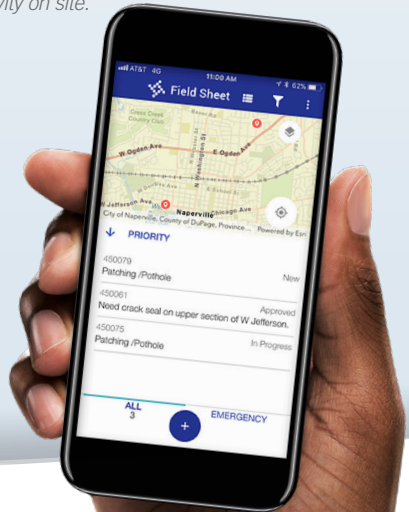
A Long-Term Partnership — The Tyler Advantage

Selecting a Tyler solution is more than just a software application — it's a partnership that will meet your needs today and for years to come. We are committed to the public sector and to developing new features and tools that keep our clients up-to-date with what they need to manage their organizations. Tyler has a 97 percent client retention rate, and many of our clients have been with us for more than 20 years.

How is that possible? Tyler's evergreen product development philosophy. We continue to invest in our solutions, ensuring that Tyler solutions are developed with public sector best practices in mind and we use the latest technology and tools to ensure client success. We then deploy these new features to our clients annually at no cost as part of the annual maintenance agreement. Tyler is committed to growing with you for years to come.



Tyler EAM and mobile apps help remote employees access schedules and project documentation, thereby improving productivity on site.



Software that thinks like you do.

Tyler Technologies (NYSE: TYL) is a leading provider of end-to-end information management solutions and services for local governments. Tyler partners with clients to empower the public sector — cities, counties, schools, special districts and other government entities — to become more efficient, more accessible and more responsive to the needs of their constituents. Tyler's client base includes more than 15,000 local government offices in all 50 states, Canada, the Caribbean, the United Kingdom and other international locations. In 2017, Forbes ranked Tyler on its "Most Innovative Growth Companies" list, and it has also named Tyler one of "America's Best Small Companies" eight times. The company has been included six times on the Barron's 400 Index, a measure of the most promising companies in America. More information about Tyler Technologies, headquartered in Plano, Texas, can be found at www.tylertech.com.

info@tylertech.com - www.tylertech.com



Empowering people who serve the public®

