

7TH STREET REHABILITATION PROPOSED IMPROVEMENTS



7TH STREET

ELM AVE

PROJECT LIMITS
WEST

7TH STREET PROPOSED IMPROVEMENTS

© 2020 Google
© 2020 INEGI
© 2021 Google

Google Earth

NEW CURB &
GUTTER

NEW DRAIN
INLET.
REPLACE
W/CITY STD.
SDDI

EXISTING
SIDEWALK TO
REMAIN



PAVEMENT FAILING

EXISTING CROSS SLOPES =
4 - 4.5%.

COLD PLANE/GRIND
ROADWAY. EXCAVATE &
GRADE TO LOWER
CROWN.

NEW PAVEMENT
SECTION:
3" AC PAVEMENT
10" AGGREGATE BASE

THERMOPLASTIC
DIAGONAL STRIPING



7TH STREET PROPOSED IMPROVEMENTS



SIDEWALK TO
REMAIN

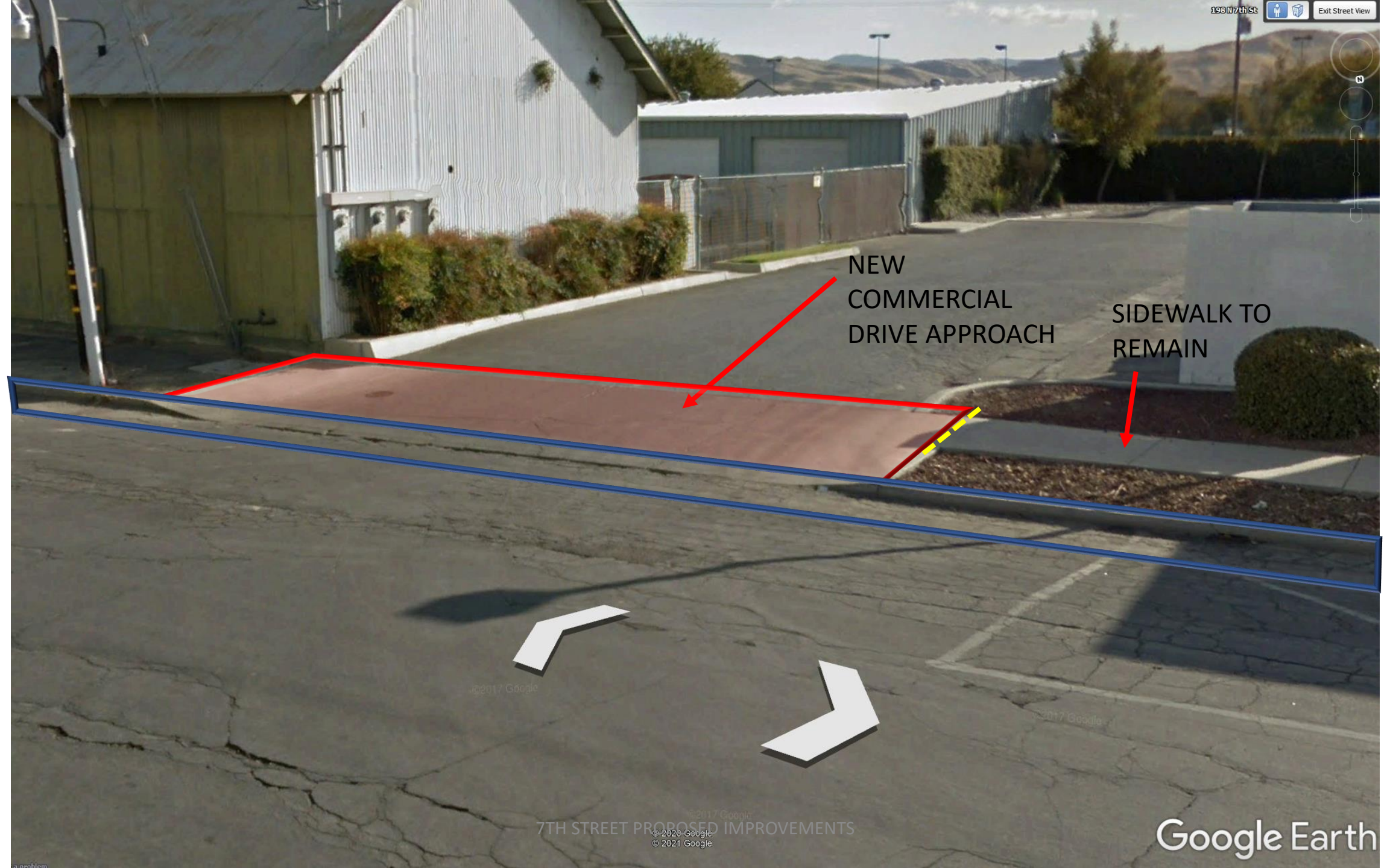
NEW CURB &
GUTTER

NEW
COMMERCIAL
DRIVE APPROACH

SIDEWALK TO
REMAIN

7TH STREET PROPOSED IMPROVEMENTS

Google Earth

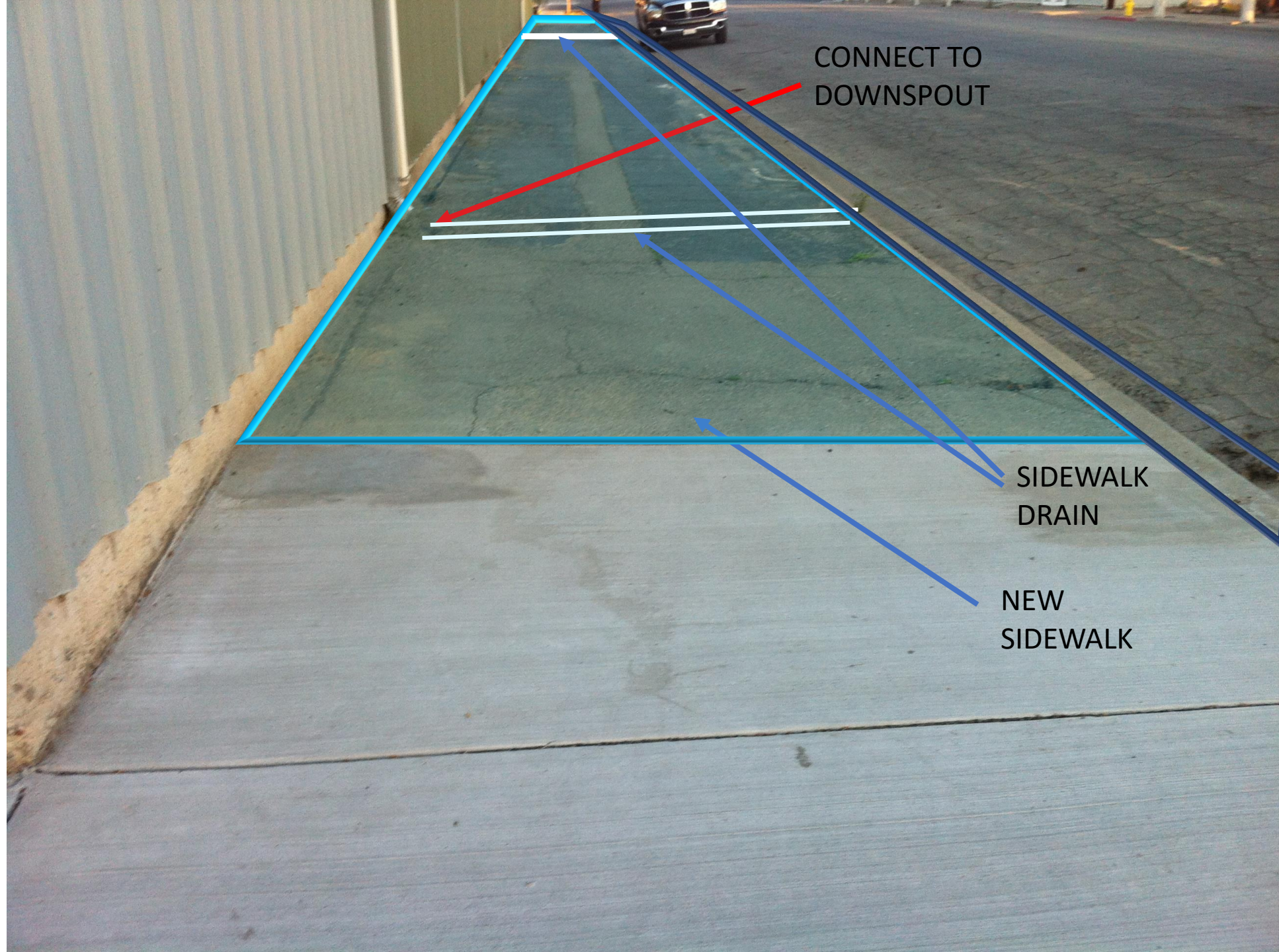


NEW CURB &
GUTTER

DEMO ALL
EXISTING AC
PAVEMENT

NEW
SIDEWALK

ADJUST TO
FINISH GRADE



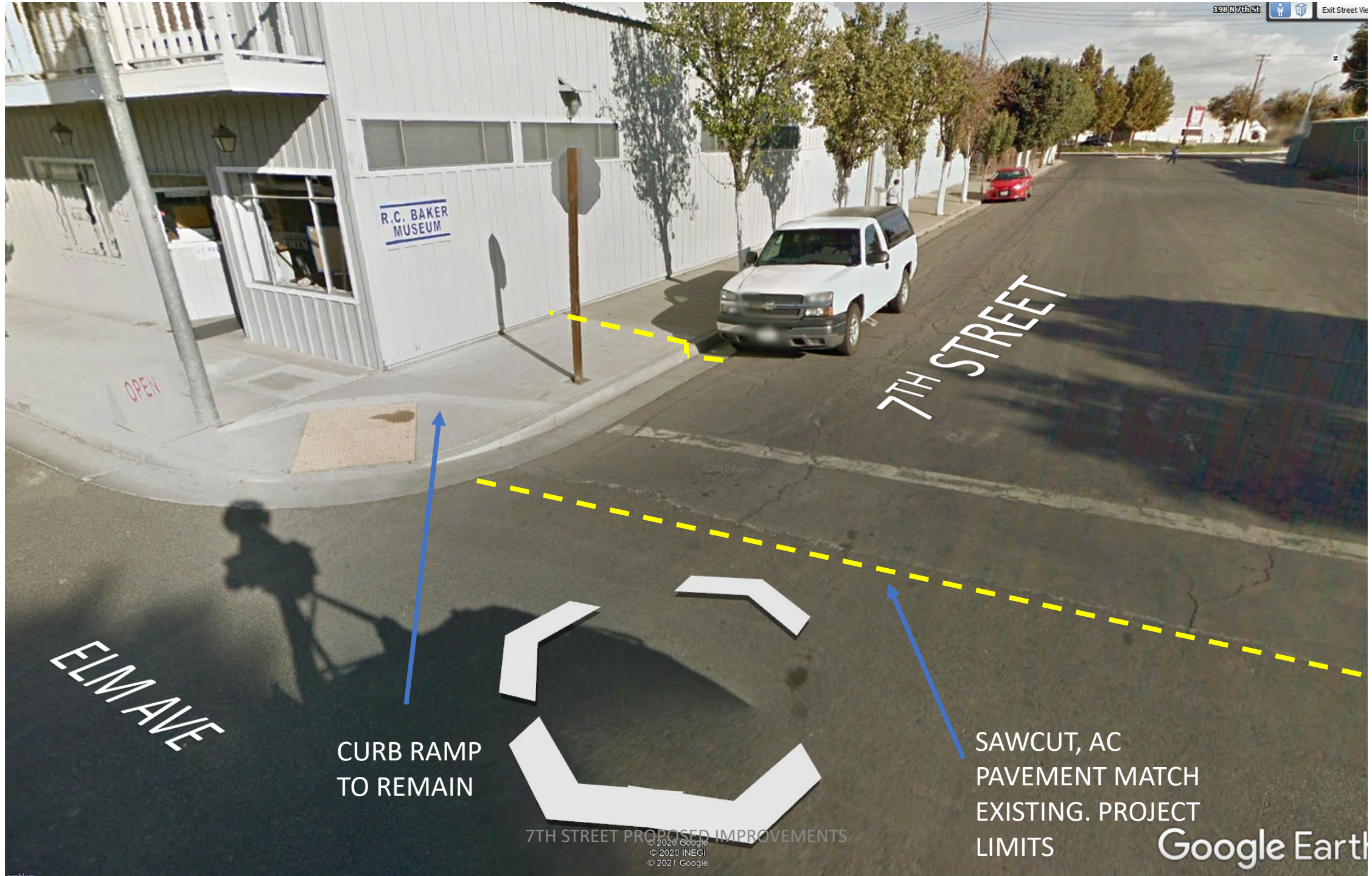
CONNECT TO
DOWNSPOUT

SIDEWALK
DRAIN

NEW
SIDEWALK



EXISTING SD
DRAIN INLET
TO REMAIN



CURB RAMP
TO REMAIN

SAWCUT, AC
PAVEMENT MATCH
EXISTING. PROJECT
LIMITS

7TH STREET PROPOSED IMPROVEMENTS

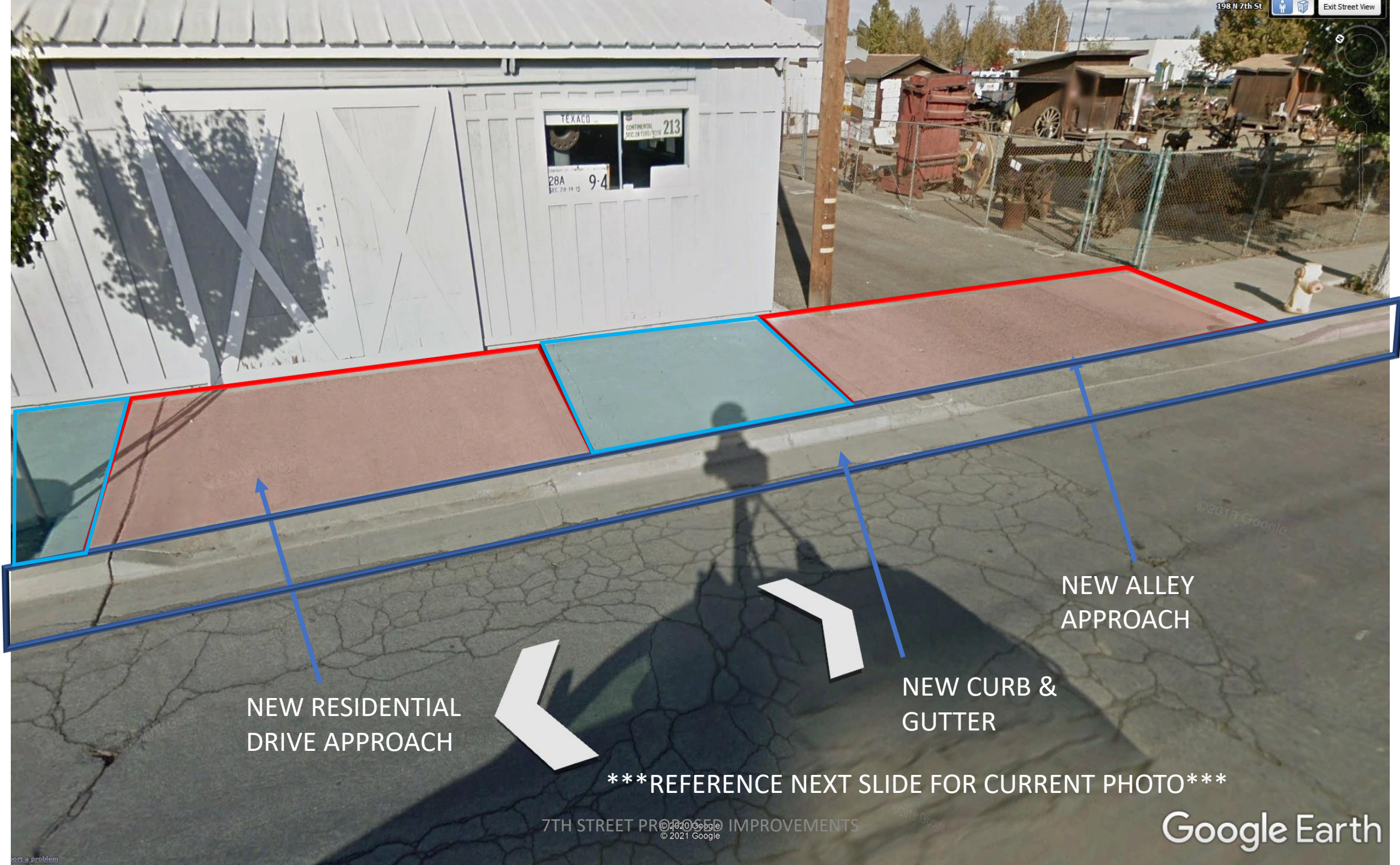
Google Earth

© 2020 Google
© 2020 INEGI
© 2021 Google



NEW SIDEWALK
***24"X24" TREE WELLS
NEW CURB &
GUTTER

7TH STREET PROPOSED IMPROVEMENTS



NEW RESIDENTIAL
DRIVE APPROACH

NEW ALLEY
APPROACH

NEW CURB &
GUTTER

REFERENCE NEXT SLIDE FOR CURRENT PHOTO



7TH STREET PROPOSED IMPROVEMENTS



NEW SIDEWALK

EXISTING CURB & GUTTER TO
REMAIN

7TH STREET PROPOSED IMPROVEMENTS

© 2020 Google
© 2020 INEGI
© 2021 Google

FOREST AVENUE

PROJECT LIMITS
EAST

7TH STREET PROPOSED IMPROVEMENTS

Google Earth