



**CITY OF COALINGA**  
**TRAILS MASTER PLAN**  
**SEGMENTS 3, 4, AND 9**  
**ENVIRONMENTAL**  
**SERVICES (NEPA/CEQA)**

**SUBMITTED TO**

City of Coalinga  
155 West Durian Avenue  
Coalinga, CA 93210

May 29, 2020 | 4:30 p.m.

**SUBMITTED BY**

SWCA Environmental Consultants  
1422 Monterey Street, Suite C200  
San Luis Obispo, CA 93401





ENVIRONMENTAL CONSULTANTS

Sound Science. Creative Solutions.®

1422 Monterey Street, B-C200  
San Luis Obispo, California 93401  
Tel 805.543.7095 Fax 805.543.2367  
www.swca.com

May 29, 2020

Sean Brewer, Assistant City Manager  
City of Coalinga  
155 West Durian Avenue  
Coalinga, CA 93210

Submitted via email: [sbrewer@coalinga.com](mailto:sbrewer@coalinga.com)

**Re: City of Coalinga Trails Master Plan Segments 3, 4, and 9 Environmental Services (NEPA/CEQA) /  
SWCA No. P61050**

Dear Mr. Brewer:

SWCA, Incorporated, dba **SWCA Environmental Consultants (SWCA)**, appreciates the opportunity to submit our proposal to provide environmental services for the City of Coalinga Trails Master Plan Segments 3, 4, and 9 (project). With over 30 years of environmental review and documentation experience, including substantial recent experience on similar projects, we feel we are highly qualified to prepare the required California Environmental Quality Act (CEQA)/National Environmental Policy Act (NEPA) technical studies in an efficient and cost-effective manner. Our scope of work reflects familiarity with applicable City of Coalinga (City) plans and policies, extensive experience conducting environmental review for similar projects, and a clear understanding of the project setting and the key environmental and procedural issues likely to be associated with the project.

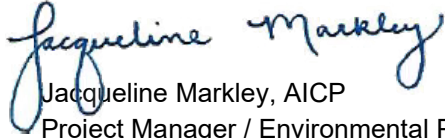
The SWCA team will be led by **Project Manager Jacqueline Markley, M.S., AICP**, who will also serve as primary point of contact. **Project Director Emily Creel, J.D.**, will provide additional management support to ensure we always remain responsive to the City, and will provide oversight and quality assurance/quality control for the SWCA team. We believe what sets SWCA apart from our competitors on this project is our depth of experience with the California Department of Transportation (Caltrans) Local Assistance Program, including projects in Caltrans District 6, as well as a working familiarity with the City. SWCA has completed numerous transportation and trails projects in Fresno County and throughout California, including the Jacalitos Creek Bridge Replacement, Kern River Parkway Bike Trail Western Extension, Bob Jones Pathway – Phase II, Rincon Multi-Use Trail, Packwood Creek Trail, Morro Creek Multi-Use Trail and Bridge, Morro Bay to Cayucos Bikeway/Pedestrian Connector Path, and Fort Bragg Coastal Trail Projects. Additionally, SWCA's CEQA-related experience on behalf of the City includes the Juniper Ridge South Business Park Initial Study/Mitigated Negative Declaration (IS/MND), Coalinga Housing Element, Coalinga Wastewater Treatment Plant (WWTP) Program Environmental Impact Report (EIR), Coalinga WWTP Trunk Line Alignment Supplemental EIR, West Hills Community College District "Farm of the Future" Master Plan Master EIR, Los Gatos Creek Estates Annexation and Development Plan EIR, and City of Coalinga 2025 General Plan Update Master EIR.

Our team will be supported by highly qualified subconsultants for key issue areas, including **AMBIENT Air Quality and Noise Consulting** (air quality/greenhouse gas emissions) and **Haro Environmental** (hazardous materials services). We have long-standing positive working relationships with these subconsultants, who were selected based on their knowledge and experience within their respective resource areas and their past and continuously proven performances.

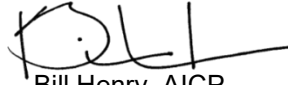
We are committed to using the staff identified in this proposal.

If you have any questions regarding our project approach or experience, please feel free to contact [SWCA Project Manager and Primary Contact Ms. Markley](#) at (805) 543-7095, extension 6822, or [jacqueline.markley@swca.com](mailto:jacqueline.markley@swca.com). We are always willing to negotiate our approach, scope of work, and team to suit your needs and expectations. Thank you for the opportunity to submit a proposal for this project, and we look forward to the possibility of working with you.

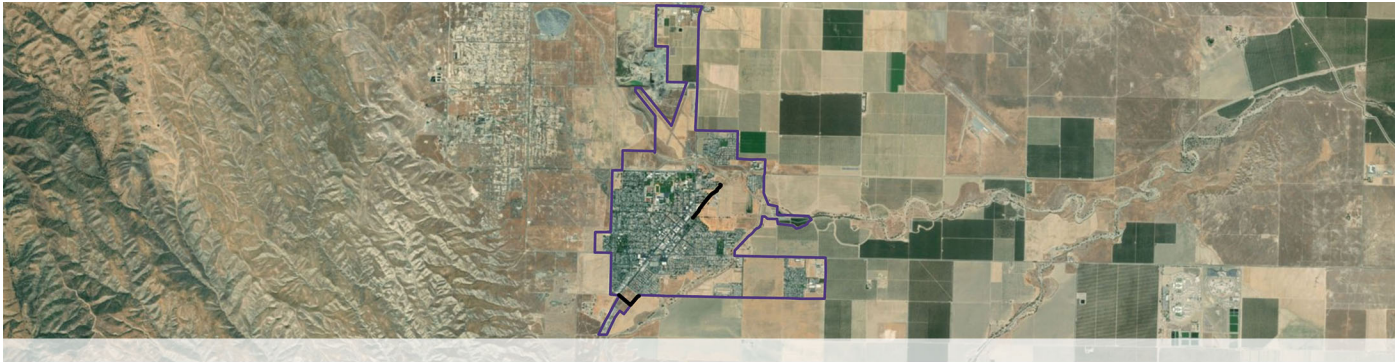
Sincerely,

Handwritten signature of Jacqueline Markley in blue ink.

Jacqueline Markley, AICP  
Project Manager / Environmental Planner

Handwritten signature of Bill Henry in blue ink.

Bill Henry, AICP  
Director



# CONTENTS

1. LETTER OF INTEREST..... i

2. STATEMENT OF QUALIFICATIONS AND EXPERIENCE ..... 1

    A. Introduction to our Team ..... 1

    B. Project Team Qualifications ..... 3

    C. Relevant Project Experience ..... 14

3. PROJECT APPROACH AND SCHEDULE ..... 29

    A. Project Understanding and Approach..... 29

    B. Scope of Services..... 29

    C. Schedule..... 36

4. ANTICIPATED BUDGET ..... 37

    A. Assumptions..... 39

5. REFERENCES..... 40

    A. SWCA Environmental Consultants..... 40

    B. Subconsultants..... 40

6. LEGAL ENTITY ..... 41

    A. SWCA Environmental Consultants..... 41

    B. Subconsultants..... 41

7. COVID-19 PRECAUTIONS..... 42

## 2. STATEMENT OF QUALIFICATIONS AND EXPERIENCE

**SWCA Environmental Consultants (SWCA)** is pleased to submit our proposal to provide environmental services to the City of Coalinga (City), specifically to prepare California Environmental Quality Act (CEQA)/National Environmental Policy Act (NEPA) technical studies for the City of Coalinga Trails Master Plan Segments 3, 4, and 9 (project). Our proposal demonstrates our experience with services similar to those outlined in the Request for Proposals (RFP), and has been prepared per the requirements of the RFP.

### A. INTRODUCTION TO OUR TEAM

#### 1. SWCA ENVIRONMENTAL CONSULTANTS

SWCA provides planning, permitting, biological resources, cultural resources, and environmental compliance services for clients throughout California, including the completion of hundreds of environmental documents (CEQA, NEPA, and other technical environmental documents) for state, local, and private projects. These documents range from Initial Studies/Mitigated Negative Declarations (IS/MNDs) and Environmental Assessments (EAs) to large Environmental Impact Reports (EIRs) and Environmental Impact Statements (EISs).

SWCA is confident that the experience of our staff and project involvement in the city of Coalinga and throughout the Central Valley best qualify our firm to provide you with quality, responsive, and cost-effective environmental services. A key component of our team's qualifications is the element of trust that we have built, fostered, and continue to maintain with our local agency clients, including the City. This has been demonstrated through our responsiveness, honesty, due diligence, and capacity to work as a team with agency staff. Our staff is recognized by clients and resource agencies for providing high-quality and high-integrity services, providing support for sound decision-making, and a focus on maintaining clear, effective communication during all public and private sector projects. We are committed to providing this same quality of service when preparing the environmental documentation for the City's proposed project.

What sets SWCA apart from our competitors is our depth of experience in transportation-related projects, and specifically our experience with local assistance and trail-related projects. The SWCA team has worked closely with the California Department of Transportation (Caltrans) for 12 years under various Master Services Agreements for On-Call Environmental Services and understands the needs and expectations of the City, Caltrans, and Federal Highway Administration (FHWA). For over 9 years, we provided Caltrans District 5 with three staff to work full time on Caltrans projects as project biologists/planners, while sitting directly within the Caltrans office. The SWCA team also includes two former District 5 employees—Gary Ruggerone, a former Caltrans Local Assistance Branch Chief and Paula Carr, a former Caltrans Senior Architectural Historian.

SWCA has completed 28 transportation-related projects in Fresno County, including the Jacalitos Creek Bridge Replacement Project approximately 4 miles southeast of Coalinga. Additionally, SWCA's CEQA-related experience on behalf of the City includes the Juniper Ridge South Business Park IS/MND, Coalinga Housing Element, Coalinga Wastewater Treatment Plant (WWTP) Program EIR, Coalinga WWTP Trunk Line Alignment Supplemental EIR, West Hills Community College District "Farm of the Future" Master Plan Master EIR, Los Gatos Creek Estates Annexation and Development Plan EIR, and City of Coalinga 2025 General Plan Update Master EIR.

#### WHAT CLIENTS SAY...

"SWCA Environmental Consultants has provided excellent technical guidance on many Fresno County road, bridge and water system projects since 2011. [The SWCA] team are exceptional, responsive, easy to work with, and have provided reasonable solutions and effective strategies on several recent bridge replacement projects.

*-Alexis Rutherford, Interim Senior Staff Analyst,  
County of Fresno Public Works and Planning"*

## 2. SUBCONSULTANTS

SWCA has extensive experience organizing and managing multidisciplinary teams and understands the importance of ensuring team coordination and cooperation throughout the environmental review process. We choose our subconsultants based on past performance history, and only those who continually meet deadlines in a timely manner and perform tasks with the highest levels of competency and integrity are selected for the team. SWCA's professional reputation helps to assure subconsultant cooperation. Our subconsultants are aware of our extensive professional relationship with lead agencies throughout California in particular, and look to ensure future work with us by performing tasks efficiently and maintaining high-quality performance standards.

For this project, **AMBIENT Air Quality & Noise Consulting** will conduct air quality and greenhouse gas (GHG) modelling using the California Emissions Estimator Model (CalEEMod) to support the air quality and GHG sections of the CEQA document, and **Haro Environmental Inc.** will provide hazardous materials assessment services.

### ***AMBIENT Air Quality & Noise Consulting***



**AMBIENT Air Quality & Noise Consulting (AMBIENT)** was formed in 2004 with the objective of providing clients with comprehensive analytical services related to the assessment of air quality, climate change, energy use, noise, and groundborne vibration impacts. Providing clients with personalized, responsive, cost-efficient, and high-quality services is the company's primary objective. AMBIENT has earned a reputation for providing a high degree of technical expertise, exceptional levels of service, and consistent dependability. AMBIENT provides services to clients

located throughout the State of California and is a registered **California Small Business Enterprise (SBE)**.

AMBIENT has over 25 years of experience in areas related to the assessment of air quality, GHG, energy use, noise, and groundborne vibration impacts. With extensive expertise related to the assessment of environmental impacts, a comprehensive working knowledge of the regulatory environment, utilization of state-of-the-art technology, and an understanding of land use planning process, AMBIENT is able to provide clients with cost-efficient, high-quality, and technically-defensible services. AMBIENT has a proven track record of exceeding client expectations while meeting project objectives, schedules, and budgets.

AMBIENT's recent projects in Fresno County and surrounding areas include the San Joaquin Bridge on Italian Bar Road Replacement Project in Fresno County; the Peach Avenue Widening and Peach Avenue Improvement Projects in the city of Fresno; and the North Willow Avenue Widening, Shaw Avenue Widening Between Locan Avenue and Maine Avenue, and Shaw Avenue Widening Between North DeWolf Avenue and North McCall Avenue Projects in the city of Clovis.

### ***Haro Environmental***



**Haro Environmental, Inc., a Disadvantaged Business Enterprise (DBE) and Women/Minority Business Enterprise (WMBE)**, provides geoenvironmental consulting services specializing in site assessments, as well as soil and groundwater investigation and cleanup, and hazardous materials handling and disposal. They

have extensive experience performing Phase I and Phase II Environmental Site Assessments (ESAs) and are familiar with the American Society for Testing and Materials (ASTM) Standards, which provide a framework for the Phase I ESA process. In addition, Haro Environmental has extensive experience performing Initial Site Assessment (ISAs) and Preliminary Site Assessments (PSIs) for Caltrans local assistance program projects.

Haro Environmental has conducted numerous site investigations and remediation activities including air, soil, groundwater, and surface water sampling; groundwater monitoring well installations; and remediation system operations and maintenance. Various environmental reports prepared include site assessment reports, feasibility studies, remedial/corrective action plans, remedial work plans, and health-based risk evaluations. Haro Environmental



has consulted with both local and regional agencies for work plan approvals and modifications to comply with the regulatory process.

Haro Environmental has performed multiple Caltrans-compliant ISAs including 16 ISAs in support of bridge projects for the County of Fresno, eight ISAs for the County of San Luis Obispo, and several other ISAs in support of roadway projects under Caltrans oversight. The ISAs were performed consistent with ASTM standard E1527-13 to meet requirements of the Preliminary Environmental Study (PES), as well as the requirements of an ISA as defined by Caltrans in *Chapter 10 – Hazardous Materials, Hazardous Waste, and Contamination of the Environmental Handbook, Volume 1: Guidance for Compliance*. Haro Environmental's recent projects in Fresno County and surrounding areas include an aerially deposited lead study for a sidewalk project for the County and a Phase II ESA/Asbestos/lead-based paint (LBP) assessment for the County of Kern.

## B. PROJECT TEAM QUALIFICATIONS

SWCA has chosen a project team with extensive CEQA compliance experience to provide the highest quality of service.

### 1. MANAGEMENT TEAM

SWCA Environmental Planner [Jacqueline Markley](#) will be the primary contact and project manager for this project and will facilitate all project team communication. The environmental process will be overseen, coordinated, and reviewed for quality assurance/quality control (QA/QC) by [SWCA Planning Team Lead Emily Creel, J.D.](#), who will be available to respond to any concerns of the project team throughout the duration of the contract. Ms. Markley will be responsible for supervising the day-to-day activities of the project team, as well as being responsible for client liaison, document review, budgeting, and public presentations, in addition to the preparation of legally defensible environmental documents. [SWCA Senior NEPA Specialist and QA/QC Reviewer Gary Ruggerone](#) will provide high-level NEPA and Local Assistance guidance and QA/QC of all deliverables.

#### ***Jacqueline Markley, M.S., AICP | Project Manager / Environmental Planner***

Ms. Markley will serve as project manager, which will include managing and preparing environmental documents, organizing and tracking action items and project details, serving as primary point-of-contact for the City, coordinating with project team members, coordinating subconsultant deliverables, facilitating in-house meetings, and preparing for and attending public hearings. She is an environmental planner that specializes in CEQA and NEPA

**SPECIALIZES IN CEQA/NEPA  
DEVELOPMENT STRATEGIES,  
PERMITTING, COMPLIANCE, AND  
PROGRAM MANAGEMENT OF COMPLEX  
PROJECTS.**

development strategies, technical assessment and reporting, permitting, compliance, and program management of complex land use, development, and land management projects. As a project manager, she has accumulated a diverse background and technical expertise providing project and team leadership for a wide range of projects in northern, central, and southern California. Ms. Markley leads project teams providing technical and analytical review and is effective in managing and working with public agency staff, public interests, private clients, and subconsultants to achieve project goals effectively and efficiently.

Ms. Markley has managed and prepared environmental documents for varying levels of CEQA and NEPA review, including Categorical Exclusions and Exemptions, MNDs, EAs, EIRs, EISs, and supporting technical reports for a variety of federal, state, and local agencies, as well as private clients. She has extensive experience evaluating a variety of environmental resources, land use opportunities and constraints, and policy consistency. Ms. Markley's projects are kept on track and within budget through close coordination with the project team, the client, and the client's design/engineering consultants. She has a broad perspective of successful processes and methods required to maintain and expand client relationships as well as create and implement innovative solutions for complex projects.

### WHAT CLIENTS SAY ABOUT JACQUELINE MARKLEY...

"Jacqueline came up to speed very quickly on our 'project' and handled it with great expertise and confidence. She was a pleasure to work with. We consider ourselves very lucky to have contracted with SWCA and to have been assigned Jacqueline. What a pro! We are very proud of the final product. The State will use it as a model for other projects to come in the future. It's that good!"

*Wayne Hall  
North SLO County Recycling*

Ms. Markley has managed and/or served as a primary author of supporting technical studies for multiple transportation-related projects in Caltrans District 6, including the Polk Avenue Road Widening Project, the Jacalitos Bridge Replacement Project, the Wahtoke Bridge Replacement Project, and the James Bypass Bridge Replacement Project, located in Fresno County, and the Kern River Bike Path Project located in Kern County. Ms. Markley has also served as a primary author for supporting technical studies for numerous transportation-related projects in Caltrans District 5, including trail, streetscape, bridge replacement, and road widening projects.

### **Emily Creel, J.D. | Project Director / Planning Team Lead**

Ms. Creel will serve as project director and will oversee the environmental process and be available to respond to any concerns of the project team throughout the duration of the contract. She received her Juris Doctor (J.D.) in 2005 and has over 15 years of experience in environmental law and planning in California. She is well versed in federal and state environmental laws and regulations, the regulatory process, and the interpretation of state statutes and local municipal codes. She has reviewed environmental documents for compliance with relevant federal, state, and local laws and has advised developers and property owners of their legal rights and responsibilities under the environmental legal framework. Her varied experience and critical thinking skills have given her the ability to handle complex environmental and legal issues, and her keen knowledge of CEQA's legal framework allows her to think creatively within that framework to meet project goals.

**SPECIALIZED BACKGROUND IN  
ENVIRONMENTAL AND PROPERTY LAW,  
WATER LAW, CEQA COMPLIANCE, AND  
PROJECT MANAGEMENT.**

### WHAT CLIENTS SAY ABOUT EMILY CREEL...

"This is just a quick note to tell you that [the City Attorney] called me last Friday and as part of the conversation was highly complimentary of you for your responses to [the project applicant's team] and exceptional organization of many details. I concur and wanted to pass that on. Thank you."

*Theresa Szymanis, AICP, Former Director  
Community Development Department  
City of Marina*

Ms. Creel's responsibilities include environmental compliance and documentation; schedule and budget management; coordination with Lead Agency staff; consultation with federal, state, and local agencies; assistance with Lead Agency correspondence to applicants, agencies, and interested parties; facilitation and support during in-house and public meetings; preparation of conditions and findings; and presentation at public hearings. Currently, Ms. Creel is serving as a contract planner and the City of San Luis Obispo's Project Manager for the Froom Ranch Specific Plan Project, which includes a Specific Plan, General Plan Amendment, pre-zoning, tract map approval, annexation, and related entitlements for the development of residential, commercial/retail, public facilities, and open space on an approximately 110-acre parcel. She also serves as project manager for the City of Marina's Responsible Agency review of the Monterey Peninsula Water Supply Project (MPWSP) EIR/EIS, and is currently acting as the Legislative Committee representative for the Association

of Environmental Professionals (AEP) Channel Counties Chapter. The Legislative Committee works with a lobbyist in Sacramento to track and comment on relevant environmental bills as they move through the California Legislature.



Her familiarity with relevant case law and the legislative background to proposed changes in environmental regulations and the State CEQA Guidelines is critical in analyzing the level of impacts on environmental resources associated with a proposed project consistent with developing case law on the topic.

Ms. Creel has served as a primary author for a number of environmental documents for trail-related projects in Caltrans District 5, including the Morro Bay to Cayucos Bikeway/Pedestrian Connector Path EIR, North San Luis Obispo Coastal Trail Constraints Analysis, City of San Luis Obispo Bob Jones Trail Octagon Barn Connection IS/MND, and Rincon Trail NEPA Technical Studies, as well as other bridge replacement and road widening projects. Additionally, Ms. Creel served as the primary author for the City of Coalinga Housing Element and provided QA/QC for the Juniper Ridge South Business Park IS/MND.

### **Gary Ruggerone | NEPA Specialist**

Mr. Ruggerone will serve as a NEPA and Local Assistance process consultant and provide high-level QA/QC, as needed. He has more than 30 years of professional experience in environmental planning involving the preparation, review, and approval of CEQA and NEPA environmental documents, environmental technical reports, and

resource agency permits. As an Environmental Branch Chief for Caltrans District 5 for over 10 years, Mr. Ruggerone was the environmental manager and contributor to hundreds of environmental determinations, including EISs/EIRs, EAs/MNDs, and Categorical Exclusions/Exemptions for transportation projects in Santa Barbara, San Luis Obispo, Monterey, San Benito, and Santa Cruz Counties. In addition, Mr. Ruggerone has prepared or supervised the preparation of hundreds of technical studies including Natural Environment Studies (NESs), Biological Assessments (BAs), Historic Property Survey Reports (HPSRs), and Section 4(f) Evaluations.

**SERVED AS ENVIRONMENTAL BRANCH  
CHIEF FOR CALTRANS DISTRICT 5 FOR  
OVER 10 YEARS.**

#### **WHAT CLIENTS SAY ABOUT GARY RUGGERONE...**

"Gary Ruggerone was especially knowledgeable and resourceful to get the Section 4(f) and 6(f) clearances for the [Lopez Drive Seismic Retrofit] project."

*Jeff Olson, Principal Engineer"  
Quincy Engineering*

As the supervisor of the Caltrans District 5 environmental branch, Mr. Ruggerone was responsible for approval of all environmental documents and technical studies and obtaining federal consultation for projects under the Caltrans Local Assistance program. Mr. Ruggerone was an approved NEPA reviewer under the FHWA NEPA Delegation program. In 2001, he represented District 5 on a Caltrans/FHWA team charged with standardizing biological technical reports. Mr. Ruggerone participated in the development of guidance and templates that are currently required for all biological technical reports prepared for Caltrans/FHWA. In 2005, Mr. Ruggerone was selected as a Local Assistance environmental representative to a statewide team that developed implementation strategies for NEPA delegation of Local Assistance projects. Strategies, guidance, and document/report

templates developed by that team resulted in California being the only state to be assigned FHWA NEPA responsibilities.

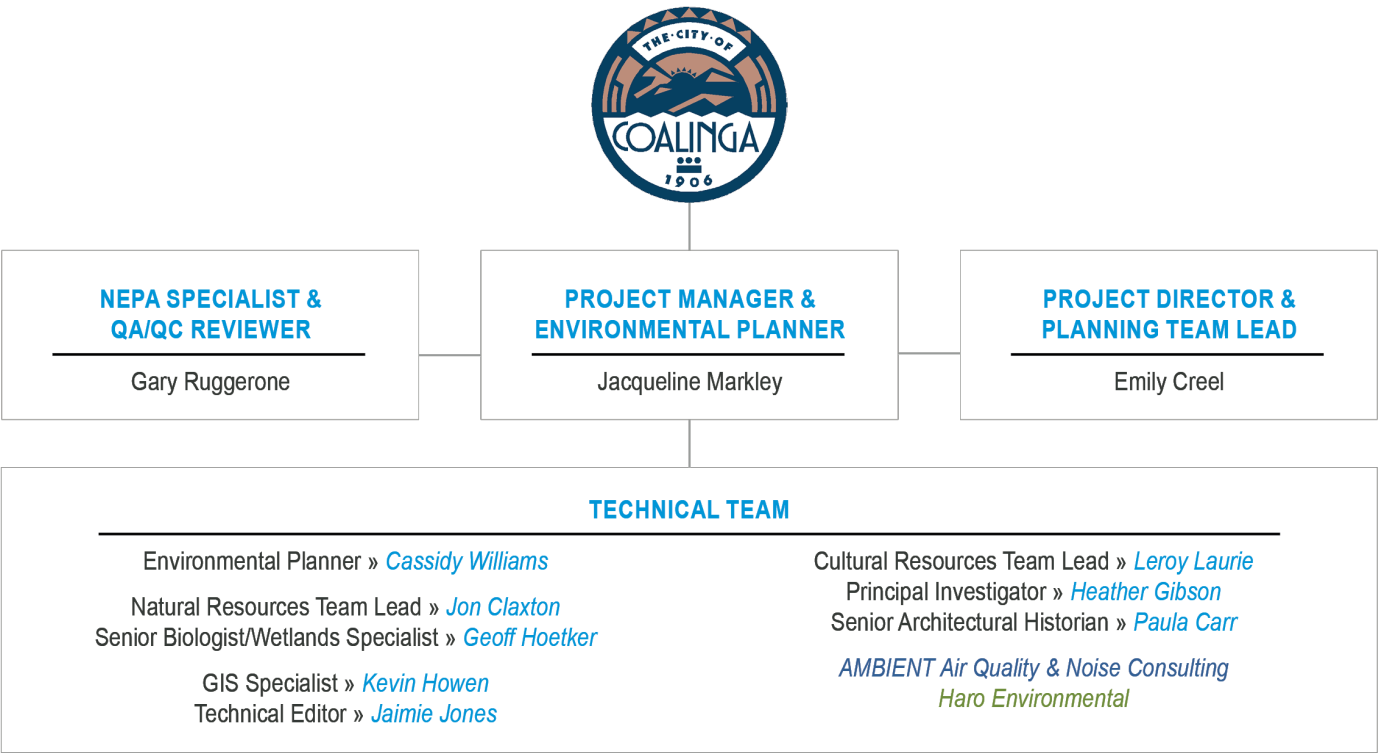
## 2. TECHNICAL TEAM

For over three decades, SWCA has provided comprehensive environmental planning, regulatory compliance, and natural and cultural resource management services to businesses and government clients across the United States. We work to understand the full life cycle of your project, from its early inception to completion. In the face of rapid environmental, economic, and societal changes, SWCA provides a comprehensive approach to the challenges you face. We offer a focused suite of environmental consulting services combined with regional knowledge, professionalism, customer-orientation, and high-quality service.

We apply our motto “*sound science, creative solutions*” to each of our projects, producing defensible technical results that ensure project success.

Figure 1 illustrates the chain of command for our project team, and Table 1 depicts the qualifications and responsibilities of each project team member. Additional project experience is discussed in each SWCA team member’s resume, included in **Appendix A, Project Team Resumes**.

Figure 1. Project Team Organization



**Table 1. Project Team Qualifications.** SWCA's planning, biological resources, and cultural resources staff are experienced with CEQA and NEPA and have specialized expertise with the various topics that arise during the environmental review process for Caltrans District 6 projects.

TEAM MEMBER, ROLE, YEARS OF EXPERIENCE, EDUCATION, AND RESPONSIBILITIES	LICENSES, CERTIFICATIONS, AND MEMBERSHIPS	AREAS OF EXPERTISE	RELEVANT PROJECT EXPERIENCE
<b>SWCA ENVIRONMENTAL CONSULTANTS</b>			
<b>Project Management Team</b>			
<b>JACQUELINE MARKLEY, AICP   PROJECT MANAGER / ENVIRONMENTAL PLANNER (14 YEARS)</b>  M.S., Environmental Management B.A., Environmental Studies; c: Ecology and Conservation, m: Anthropology  <i>Responsibilities: Project management, environmental document preparation, planning support, public meetings and hearings</i>	<ul style="list-style-type: none"> <li>• Association of Environmental Professionals</li> <li>• American Planning Association</li> <li>• Certified Planner, California No. 296536; American Institute of Certified Planners; 2017</li> </ul>	<ul style="list-style-type: none"> <li>• Project Management</li> <li>• CEQA/NEPA analysis and compliance</li> <li>• Land use and policy analysis</li> <li>• Mitigation monitoring plans</li> <li>• Agency consultation/coordination</li> </ul>	<ul style="list-style-type: none"> <li>• Jacalitos Bridge Replacement Project Environmental Services</li> <li>• Wahtoke Creek Bridge Replacement Project Environmental Services</li> <li>• James Bypass Bridge Replacement Project Environmental Services</li> <li>• Bob Jones Pathway Project Environmental Services</li> <li>• Kern River Bike Trail Western Expansion Environmental Services</li> <li>• Shell Beach Road Streetscape and Pedestrian Safety Project Environmental Services</li> <li>• City of Pismo Beach General Plan Circulation Element Update IS/MND</li> <li>• Higuera Street Widening Project Environmental Services</li> <li>• Prado Road Bridge Widening Project Environmental Services</li> <li>• Highway 46 Warehouse EIR</li> <li>• Solari Sand and Gravel Project EIR</li> <li>• Johe Ranch Surface Mining &amp; Reclamation Plan Project EIR</li> <li>• Lost Hills Landfill Expansion Project EIR</li> <li>• South Shafter Sewer Biological Resources Studies</li> </ul>



TEAM MEMBER, ROLE, YEARS OF EXPERIENCE, EDUCATION, AND RESPONSIBILITIES	LICENSES, CERTIFICATIONS, AND MEMBERSHIPS	AREAS OF EXPERTISE	RELEVANT PROJECT EXPERIENCE
<b>EMILY CREEL, J.D.   PROJECT DIRECTOR / PLANNING TEAM LEAD (15 YEARS)</b>  J.D., Focused Studies on Property, Land Use, and Environmental Law B.A., Political Science  <i>Responsibilities: QA/QC, team coordination, environmental document preparation</i>	<ul style="list-style-type: none"> <li>Member of the State Bar of California</li> <li>Association of Environmental Professionals, Channel Counties Chapter – Legislative Committee Chair, CEQA Portal Committee member</li> </ul>	<ul style="list-style-type: none"> <li>Project management</li> <li>Environmental law and studies</li> <li>CEQA/NEPA analysis and compliance</li> <li>Design of mitigation measures</li> <li>CEQA litigation and case law precedence</li> </ul>	<ul style="list-style-type: none"> <li>Rincon Multi-Use Trail Project Environmental Services</li> <li>Bob Jones Multi-use Pathway Permitting Assistance</li> <li>Prado Road Bridge Widening Environmental Services</li> <li>Via Avenue Bridge Replacement Regulatory Permitting</li> <li>Galt SR99/Twin Cities Rd Interim Improvements Environmental Services</li> <li>Lopez Drive Bridge Seismic Retrofit Project Engineering Services</li> <li>SR-1/ SR-41/Main Street Interchange Improvement Environmental Services</li> <li>City of Pismo Beach General Plan Circulation Element Update</li> <li>Mission Canyon Bridge Replacement Project Environmental Services</li> </ul>
<b>GARY RUGGERONE   NEPA SPECIALIST (41 YEARS)</b>  M.A., Biology; e: Population / Aquatic B.S., Biological Sciences  <i>Responsibilities: NEPA QA/QC, Section 4(f) evaluation</i>	<ul style="list-style-type: none"> <li>Certified NEPA Quality Control Reviewer</li> <li>Caltrans Superior Accomplishment Awards (1994, 2001, 2003, 2010)</li> <li>FHWA Environmental Excellence Award for Leadership</li> <li>Caltrans 2010 Emerson Rhyner Award</li> </ul>	<ul style="list-style-type: none"> <li>CEQA/NEPA compliance</li> <li>Endangered Species Act compliance</li> <li>Natural resource management</li> <li>Department of Transportation Act, Section 4(f)</li> <li>Biology</li> <li>Ecology</li> <li>Environmental planning</li> <li>Wetland ecology</li> </ul>	<ul style="list-style-type: none"> <li>Kern River Bike Trail Western Expansion Environmental Services</li> <li>Rincon Trail NEPA Technical Studies</li> <li>James Bypass Bridge Replacement Environmental Services</li> <li>Wahtoke Creek Bridge Replacement Environmental Services</li> <li>T.O. 39 Merced River Bridge Replacement Environmental Services</li> <li>Mission Canyon Bridge Replacement Environmental Services</li> <li>Via Avenue Bridge Replacement Environmental Services</li> <li>Santa Lucia Road Bridge Replacement Environmental Services</li> </ul>

TEAM MEMBER, ROLE, YEARS OF EXPERIENCE, EDUCATION, AND RESPONSIBILITIES	LICENSES, CERTIFICATIONS, AND MEMBERSHIPS	AREAS OF EXPERTISE	RELEVANT PROJECT EXPERIENCE
<b>Planning Team</b>			
<b>CASSIDY WILLIAMS   ENVIRONMENTAL PLANNER (3 YEARS)</b>  B.S., Environmental Management and Protection; m: City and Regional Planning  <i>Responsibilities: Environmental document preparation</i>	<ul style="list-style-type: none"> <li>• Association of Environmental Professionals</li> </ul>	<ul style="list-style-type: none"> <li>• Environmental impact analysis</li> <li>• CEQA documentation</li> </ul>	<ul style="list-style-type: none"> <li>• Kern River Bike Trail Western Expansion Environmental Services</li> <li>• Prado Road Bridge Widening Environmental Services</li> <li>• Via Avenue Bridge Replacement Regulatory Permitting</li> <li>• Lopez Drive Bridge Seismic Retrofit Project Engineering Services</li> <li>• Dover Canyon Road at Jack Creek Bridge Replacement Project</li> <li>• Via Avenue Bridge Replacement Project Environmental Services</li> <li>• Santa Lucia Road Bridge Replacement Project Environmental Services</li> </ul>
<b>Biological Resources Team</b>			
<b>JON CLAXTON   NATURAL RESOURCES TEAM LEAD (19 YEARS)</b>  B.S., Biological Sciences  <i>Responsibilities: Local Assistance compliance, biological resources QA/QC</i>	<ul style="list-style-type: none"> <li>• Plant Voucher Collecting Permit; CDFW, 2081(a)-09-04-V</li> <li>• Scientific Collecting Permit; CDFW, SC-7285</li> <li>• Wetland Delineation Training; USACE</li> <li>• Approved Primary Fisheries Biologist; NOAA Fisheries</li> <li>• Association of Environmental Professionals</li> </ul>	<ul style="list-style-type: none"> <li>• Section 7 Consultation</li> <li>• Environmental impact analysis</li> <li>• Sensitive species consultation</li> <li>• Caltrans compliance documents and Local Assistance Programs</li> <li>• Constraints and feasibility study reports</li> <li>• Wetland delineations</li> </ul>	<ul style="list-style-type: none"> <li>• Kern River Bike Trail Western Expansion Environmental Services</li> <li>• Caltrans Environmental Generalist On-call Services</li> <li>• Wahtoke Creek Bridge Replacement Environmental Services and Monitoring</li> <li>• James Bypass Bridge Replacement Environmental Services</li> <li>• Task Order (T.O. 44) Mendota SR-180 Biological Monitoring</li> <li>• Mission Canyon Bridge Replacement Environmental Services</li> <li>• Branch Mill Bridge Replacement Environmental Services</li> <li>• T.O. 39 Merced River Bridge Replacement Environmental Services</li> </ul>

TEAM MEMBER, ROLE, YEARS OF EXPERIENCE, EDUCATION, AND RESPONSIBILITIES	LICENSES, CERTIFICATIONS, AND MEMBERSHIPS	AREAS OF EXPERTISE	RELEVANT PROJECT EXPERIENCE
<b>GEOFF HOETKER   SENIOR BIOLOGIST / WETLANDS SPECIALIST (21 YEARS)</b>  M.S., Biological Sciences B.S., Biology  <i>Responsibilities: Biological resources surveys and assessment</i>	<ul style="list-style-type: none"> <li>Scientific Collecting Permit, CDFW; SC-005046</li> <li>CDFW Plant Voucher Collecting Permit (2081(a)-17-114-V); CA</li> <li>USFWS Threatened and Endangered Species Recovery Permit (TE824123-7); CA</li> <li>California Red-Legged Frog Workshop, Alameda County Conservation Partnership; 2005</li> <li>Arid West Wetland Delineation Training, USACE; 2006</li> </ul>	<ul style="list-style-type: none"> <li>Biological resources technical reports</li> <li>Caltrans Natural Environment Studies and Biological Assessments</li> <li>CEQA/NEPA documentation</li> <li>Global Positioning System (GPS) resource mapping</li> <li>Permitting</li> <li>Project management</li> <li>Special-status species surveys</li> <li>Wetland delineation reports, mitigation, and monitoring plans</li> </ul>	<ul style="list-style-type: none"> <li>Task Order 1 - Kern River Bike Trail Extension Blunt-Nosed Leopard Lizard Surveys</li> <li>Fresno Yosemite Airport Taxiway Realignment Biological Resource Studies</li> <li>Salinas River Bridge Seismic Retrofit Environmental Services</li> <li>Old Creek Bridge Replacement Environmental Services</li> <li>Trout Creek Bridge Replacement Environmental Services</li> <li>Linden-Casitas Interchanges (Carpinteria Creek Bridge Replacement) Environmental Services</li> <li>T.O. 39 Merced River Bridge Replacement Environmental Services</li> <li>Hwy 1 Auxiliary Lanes State Park to Freedom Boulevard Environmental Services</li> <li>Task Order 18 - Kern River Bike Path PS&amp;E and Construction Support</li> <li>Elk Hills Road Shoulder Construction Environmental Services</li> </ul>
<b>Cultural Resources Team</b>			
<b>LEROY LAURIE   CULTURAL RESOURCES TEAM LEAD / SENIOR ARCHAEOLOGIST (18 YEARS)</b>  B.S., Social Sciences  <i>Responsibilities: Cultural resources surveys and assessment</i>	<ul style="list-style-type: none"> <li>Society for California Archaeology</li> <li>Association of Environmental Professionals</li> </ul>	<ul style="list-style-type: none"> <li>CEQA/NEPA and NHPA Section 106 compliance</li> <li>Archaeological survey, excavation, monitoring</li> <li>Archival research, surveys, and excavations</li> <li>Cultural resources management</li> <li>Molluscan identification and analysis</li> </ul>	<ul style="list-style-type: none"> <li>Packwood Creek Trail Project Archaeological Survey Report</li> <li>Fresno Yosemite International Airport Passenger Terminal Cultural Resources Studies</li> <li>Fresno Yosemite Airport Taxiway Realignment Environmental Services</li> <li>Mission Canyon Bridge Replacement Environmental Services</li> <li>Dover Canyon Road at Jack Creek Bridge Replacement Environmental Services</li> <li>Via Avenue Bridge Replacement Environmental Services</li> </ul>



TEAM MEMBER, ROLE, YEARS OF EXPERIENCE, EDUCATION, AND RESPONSIBILITIES	LICENSES, CERTIFICATIONS, AND MEMBERSHIPS	AREAS OF EXPERTISE	RELEVANT PROJECT EXPERIENCE
<b>HEATHER GIBSON, PH.D., RPA   CULTURAL RESOURCES PRINCIPAL INVESTIGATOR (19 YEARS)</b>  Ph.D., with distinction, Anthropology M.A., Anthropology B.A., magna cum laude, Anthropology and French  <i>Responsibilities: Cultural resources QA/QC</i>	<ul style="list-style-type: none"> <li>National Preservation Institute, Section 106 Review; 2012</li> <li>HAZWOPER 40-hour certification; 2012</li> <li>National Preservation Institute, Section 106 Basics; 2010</li> <li>Meets and Exceeds the Secretary of the Interior's Professional Qualification Standards in History and Archaeology</li> <li>Registered Professional Archaeologist No. 3532600; 2010</li> </ul>	<ul style="list-style-type: none"> <li>Cultural resources management</li> <li>California history and archaeology</li> <li>18th and 19th century artifact analysis</li> <li>Archival research, surveys, and excavations</li> </ul>	<ul style="list-style-type: none"> <li>Italian Bar Road Bridge Replacement Archaeological and Biological Support</li> <li>Rowlee Road Biological and Archaeological Surveys</li> <li>Renfro Road Biological and Archaeological Surveys</li> <li>California City Boulevard Environmental Studies</li> <li>Rowlee Road (South of Lerdo) Biological and Archaeological Surveys</li> <li>Shafter Avenue Shoulders ASR</li> <li>Brite Road and Mirasol Avenue Overlay Project ASR and HPSR</li> <li>Tehachapi Municipal Airport South Taxiway Rehabilitation</li> <li>Kern Valley Airport Environmental Services</li> <li>Meadows Field Airport Categorical Exemption Environmental Support</li> </ul>
<b>PAULA CARR   SENIOR ARCHITECTURAL HISTORIAN (27 YEARS)</b>  M.A., History, Anthropology, Art History, Folklore and Mythology B.A., Cultural Anthropology Ph.D. Program Coursework, History  <i>Responsibilities: Built environment evaluation</i>	<ul style="list-style-type: none"> <li>Association of Environmental Professionals</li> <li>Meets the Secretary of the Interior's Professional Qualifications Standards in History and Architectural History</li> </ul>	<ul style="list-style-type: none"> <li>CEQA/NEPA and NHPA Section 106 compliance</li> <li>Historical context research</li> <li>Development of interpretive exhibit projects</li> <li>Ability to work with Spanish-language primary sources</li> </ul>	<ul style="list-style-type: none"> <li>Fresno Yosemite International Airport Passenger Terminal Cultural Resources Studies</li> <li>Mission Canyon Bridge Replacement Environmental Services</li> <li>Prado Road Bridge Widening Environmental Services</li> <li>Lopez Drive Bridge Seismic Retrofit Engineering Services</li> <li>Dover Canyon Road at Jack Creek Bridge Replacement Environmental Services</li> <li>Via Avenue Bridge Replacement Environmental Services</li> <li>Santa Lucia Road Bridge Replacement Environmental Services</li> </ul>

TEAM MEMBER, ROLE, YEARS OF EXPERIENCE, EDUCATION, AND RESPONSIBILITIES	LICENSES, CERTIFICATIONS, AND MEMBERSHIPS	AREAS OF EXPERTISE	RELEVANT PROJECT EXPERIENCE
<b>Document Support Team</b>			
<b>KEVIN HOWEN   GIS SPECIALIST (5 YEARS)</b> B.S., Earth Sciences; m: Geographic Information Systems  <i>Responsibilities: GIS/CAD, environmental document graphics</i>	<ul style="list-style-type: none"> <li>• Association of Environmental Professionals</li> </ul>	<ul style="list-style-type: none"> <li>• ESRI GIS mapping software and programming (ArcGIS, ArcInfo, ESRI ArcGIS Desktop)</li> <li>• Technical illustration and graphics utilizing Adobe Illustrator / Photoshop</li> <li>• AutoCAD and drafting utilizing AutoDesk AutoCAD</li> <li>• Remote sensing surveys utilizing ERDAS Imagine</li> </ul>	<ul style="list-style-type: none"> <li>• Kern River Parkway Bike Trail, Western Extension Environmental Planning Services</li> <li>• Bob Jones Pathway NEPA Studies</li> <li>• Wahtoke Creek Bridge Replacement Environmental Services</li> <li>• James Bypass Bridge Replacement Environmental Services</li> <li>• Mission Canyon Bridge Replacement Environmental Services</li> <li>• Dover Canyon Road at Jack Creek Bridge Replacement Environmental Services</li> <li>• Via Avenue Bridge Replacement Environmental Services</li> <li>• Santa Lucia Road Bridge Replacement Environmental Services</li> <li>• El Camino Real Bridge Replacement Environmental Services</li> </ul>
<b>JAIMIE JONES   TECHNICAL EDITOR (16 YEARS)</b> A.A. Coursework, Liberal Arts A.S. Coursework, Fire Science  <i>Responsibilities: Technical editing, document compilation and production</i>	<ul style="list-style-type: none"> <li>• Professional Sequence in Editing Certification; UC Berkeley Extension</li> <li>• Association of Environmental Professionals</li> </ul>	<ul style="list-style-type: none"> <li>• CEQA/NEPA analysis</li> <li>• Document editing and compilation</li> </ul>	<ul style="list-style-type: none"> <li>• Kern River Parkway Bike Trail, Western Extension Environmental Planning Services</li> <li>• Wahtoke Creek Bridge Replacement Environmental Services</li> <li>• Jacalitos Creek Bridge Replacement Environmental Services</li> <li>• Packwood Creek Trail Archaeological Survey Report</li> <li>• Bob Jones Pathway NEPA and CEQA Studies</li> <li>• North Fort Bragg Coastal Trail EIR/EA</li> <li>• North San Luis Obispo Coastal Trail Constraints Analysis</li> <li>• Morro Bay to Cayucos Connector EIR</li> <li>• Pecho Coast Trail Biological Review</li> </ul>

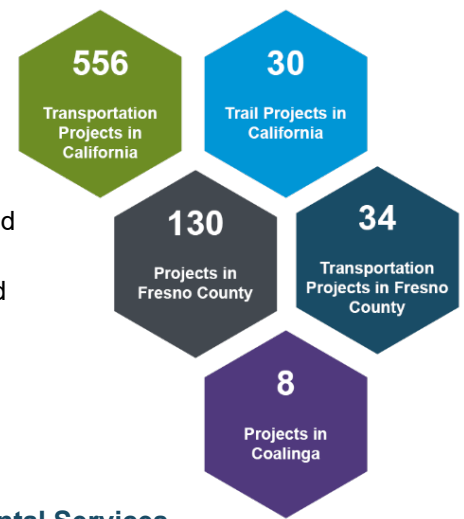
TEAM MEMBER, ROLE, YEARS OF EXPERIENCE, EDUCATION, AND RESPONSIBILITIES	LICENSES, CERTIFICATIONS, AND MEMBERSHIPS	AREAS OF EXPERTISE	RELEVANT PROJECT EXPERIENCE
<b>AMBIENT AIR QUALITY &amp; NOISE CONSULTING</b>			
<b>KURT LEGLEITER   PRINCIPAL (21 YEARS)</b> B.S., Environmental Health Science B.A., Urban & Environmental Planning  <i>Responsibilities: Air quality modelling</i>	<ul style="list-style-type: none"> <li>Acoustical Society of America</li> <li>Air &amp; Waste Management Association</li> <li>Association of Environmental Professionals</li> </ul>	<ul style="list-style-type: none"> <li>Air Quality &amp; Greenhouse Gas Assessments</li> <li>Noise &amp; Groundborne Vibration Assessments</li> <li>Health Risk Assessments</li> <li>Noise &amp; Groundborne Vibration Monitoring</li> <li>Caltrans/FHWA Compliance Documentation</li> </ul>	<ul style="list-style-type: none"> <li>Cerrato Development Project</li> <li>The Villages at Santa Ana Residential Development Project</li> <li>Chambers Event Center</li> <li>Cypress Pacific Apartments Project</li> <li>Ferrini Ranch Subdivision Project</li> <li>Fremont Elementary School</li> <li>General Jim Moore Blvd. Traffic Noise Assessment</li> <li>Gigling Road and South Boundary Road Reconstruction Projects</li> <li>Heritage Oaks Subdivision Project</li> </ul>
<b>HARO ENVIRONMENTAL</b>			
<b>ELLIOT HARO   PRINCIPAL SCIENTIST (14 YEARS)</b> M.S., Soil Science B.S., Soil Science  <i>Responsibilities: Hazardous materials assessment</i>	<ul style="list-style-type: none"> <li>Registered Environmental Assessor (REA I; State program discontinued)</li> <li>Hazardous Waste Operations and Emergency Response (HAZWOPER) 40-hour training and yearly 8-hour refresher</li> </ul>	<ul style="list-style-type: none"> <li>Phase I and II ESAs</li> <li>Soil and groundwater investigations</li> <li>Soil and groundwater remediation</li> <li>Remediation technology evaluation</li> <li>Site characterization</li> <li>Remediation system operations and maintenance</li> </ul>	<ul style="list-style-type: none"> <li>Sri Padma LLC Groundwater Remediation</li> <li>Sutter Avenue Landfill Groundwater Monitoring and Reporting</li> <li>Archer Street Property Phase I ESA and Soil Vapor Sampling and Reporting</li> <li>Brisco Interchange Project Phase I ISA</li> <li>Buckley Road TCE Soil, Soil Vapor, and Groundwater Investigation</li> </ul>
<b>TIM NELLIGAN   PROFESSIONAL ENGINEER (20 YEARS)</b> B.S., Environmental Engineering  <i>Responsibilities: Hazardous materials assessment</i>	<ul style="list-style-type: none"> <li>Professional Engineer # C68666</li> <li>Hazardous Waste Operations and Emergency Response (HAZWOPER) 40-hour training and yearly 8-hour refresher</li> </ul>	<ul style="list-style-type: none"> <li>Soil and groundwater investigations</li> <li>Data analysis and management</li> <li>Remediation technology evaluation</li> <li>Engineering design</li> <li>Construction oversight</li> <li>Operation and maintenance</li> </ul>	<ul style="list-style-type: none"> <li>Sri Padma LLC Groundwater Remediation</li> <li>Archer Street Property Phase I ESA and Soil Vapor Sampling and Reporting</li> <li>Brisco Interchange Project Phase I ISA</li> <li>Various Phase I ISAs throughout San Luis Obispo County</li> <li>Former Dean Alco Site Soil and Groundwater Remediation of Solvents. Excavation and In-Situ Bio-Remediation</li> </ul>



## C. RELEVANT PROJECT EXPERIENCE

SWCA has been providing CEQA services to the City since 2002 and environmental services on behalf of state and local agencies for transportation and multi-modal projects for the past 36 years.

The relevant projects included below include demonstrate our experience performing similar services, as well as our thorough knowledge of and adherence to federal, state, and local regulations. Our project manager and team have demonstrated a high level of competency and ability to consistently produce quality deliverables in a timely manner for various public agencies and private clients.



### 1. SWCA ENVIRONMENTAL CONSULTANTS

#### *Trail Projects*

#### **Kern River Parkway Bike Trail, Western Extension Project Environmental Services**

**Role:** Prime | **Client:** Kern County Public Works Department | **Timeframe:** November 2016–May 2019

At the request of the Kern County Public Works Department, SWCA provided environmental services in support of the Kern River Parkway Bike Trail, Western Extension Project, which included construction of approximately 7 miles of bike path from the existing Kern River Parkway Bike Trail to the Buena Vista Aquatic Recreation Area in Kern County, California. Construction would generally include up to 10 feet of Asphalt Concrete (AC) bike path and up to 2 feet of shoulder and backing for the entire 7-mile extension.

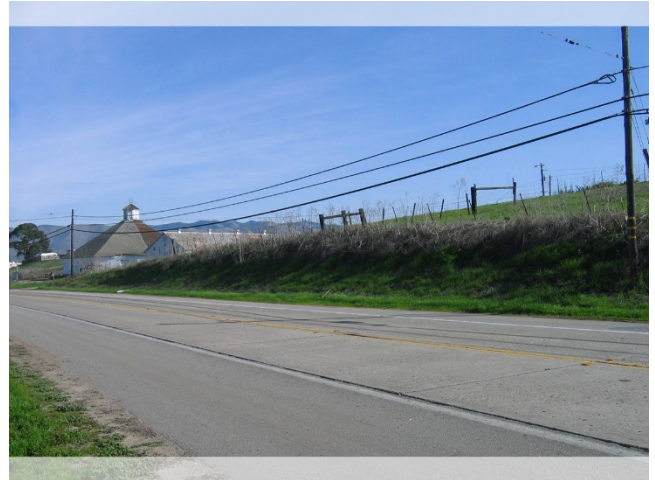
SWCA supported Kern County with biological services, including protocol surveys for blunt-nosed leopard lizard, giant kangaroo rat, Tipton's kangaroo rat, and Buena Vista Lake shrew. SWCA also provided biological impact analysis for the CEQA document and the preparation of the Natural Environment Study (NES) and Biological Assessment (BA), which will be provided to Caltrans to satisfy NEPA requirements. In addition, SWCA provided technical review on all issue areas within the CEQA document and prepared a Water Quality Assessment (WQA) memorandum for the proposed bike path extension. The Kern River Parkway Bike Trail is considered one of the most challenging projects that Kern County is currently executing at this time. SWCA has demonstrated an ability to meet the internal and project deadlines, stay within the budget, meet major milestones, and maintain the overall project schedule.



## Bob Jones Pathway, Phase II CEQA and NEPA Studies

**Role:** Prime | **Client:** County of San Luis Obispo Parks | **Timeframe:** October 2005–present (ongoing)

SWCA was retained by County of San Luis Obispo Parks to prepare technical studies necessary to satisfy NEPA and CEQA requirements for construction of the Phase II of the Bob Jones Pathway, a Class I and Class III pedestrian/bicycle trail connecting the City of San Luis Obispo and the community of Avila Beach. The portion of the proposed pathway (San Luis Obispo to Ontario Road) is an approximately 4.4-mile route that would connect the existing bikeway along South Higuera Street in the City of San Luis Obispo, paralleling San Luis Obispo Creek, to the Ontario Road Staging Area near the community of Avila Beach.



The SWCA team completed an NES, BA, California Red-Legged Frog Survey Report, Wetland Assessment, Visual Impacts Study, Farmland Report, and National Historic Preservation Act (NHPA) Section 106 compliance documents, including an Archaeological Survey Report (ASR), a Historic Resources Evaluation Report (HRER), and a Historic Properties Survey Report (HPSR). The subsequent CEQA analysis resulted in project design changes, and SWCA recently prepared addendums to the technical studies to reflect the new project description. The County of San Luis Obispo has indicated that construction of the new corridor would occur in phases as funding is available.

## Rincon Multi-Use Trail Project Environmental Services

**Role:** Subconsultant | **Client:** Bengal Engineering / City of Carpinteria, County of Santa Barbara, and SBCAG (Owners) | **Timeframe:** June 2017–present (ongoing)

SWCA was retained by Bengal Engineering, Inc. to assist the City of Carpinteria, Santa Barbara County Department of Public Works, and Santa Barbara County Association of Governments (SBCAG) with environmental services related to the Rincon Multi-Use Trail Project. With the use of Active Transportation Plan (ATP) funds, the City of Carpinteria Parks and Recreation Department proposes to construct a new multi-use hiking and biking trail (constructed to Class 1 Bikeway specifications) that would extend approximately 2,800 feet from Carpinteria Avenue to Rincon Beach County Park and the Santa Barbara/Ventura County Line. This project would be located within and require right-of-way from Caltrans, the County, Union Pacific Railroad (UPRR), and possibly private landowners. The trail would extend across the railroad via an approximately 160-foot-long and 14- to 16-foot-wide bridge structure.

SWCA was originally retained to prepare the various NEPA technical studies that would be required for Caltrans review and approval consistent with its FHWA NEPA delegation. Under this scope, SWCA prepared a Noise Technical Memorandum, Natural Environment Study – Minimal Impact (NES-MI), Section 4(f) and 6(f) documentation, Visual Impact



Assessment, and a field survey for NHPA Section 106 documentation. The City of Carpinteria had previously completed an IS/MND in compliance with CEQA. However, SWCA was further retained to coordinate with Caltrans regarding coastal permitting, preparation of a Coastal Zone Consistency Determination, and preparation of a Categorical Exclusion for compliance with NEPA. Through preparation of the technical studies, it was identified that past cultural studies conducted in support of the City's MND did not include the entire project area. Therefore, SWCA was further retained to complete an ASR, an HPSR, and a Finding of No Adverse Effect. Preparation of the additional NHPA Section 106 documentation is currently underway.

### **Morro Bay to Cayucos Bikeway/Pedestrian Connector Path Project EIR**

---

**Role:** Prime | **Client:** County of San Luis Obispo Parks | **Timeframe:** July 2009–August 2010

---

SWCA was retained by the County of San Luis Obispo General Services Agency Parks Division (County Parks) to conduct an environmental review of the proposed Morro Bay to Cayucos Bikeway/Pedestrian Connector Path project. The objective of the project is to complete an important segment in the non-motorized transportation network along Highway 1. The project would be part of the California Coastal Trail and include a dedicated Class I bicycle path and pedestrian corridor, completely separated from traffic from the city of Morro Bay to the southern end of the community of Cayucos.



SWCA prepared an Environmental Constraints Analysis (ECA) for the proposed project corridor, which extended for approximately 4 miles. Preparation of the ECA was the first phase of environmental review. Preparation of the ECA allowed the County to develop a project alignment that would meet their project objectives while resulting in the least environmental impact. SWCA worked closely with County Parks, and developed a document focused on key coastal issues, which would affect the design of the proposed project and feasible alternatives. SWCA identified environmental, regulatory, and public involvement factors having the greatest effect on the schedule and budget, and allowed project engineers to refine subsequent designs in a manner that avoids sensitive resources to the maximum extent feasible while achieving the objective of the project.

SWCA was subsequently retained by County Parks to prepare an EIR for the proposed project. The revised alignment would provide a scenic and safe bicycle/pedestrian route and continuous off-highway connectivity for a distance of approximately 1.25 miles. SWCA prepared the Initial Study, attended the project scoping meeting, prepared the EIR, and attended public hearings. Issues considered in the EIR include Geology and Soils (including bluff retreat), Aesthetic Resources, Drainage, Biological Resources, Cultural Resources, Traffic and Safety. The EIR was certified August 2010.



## Fort Bragg Coastal Trail EIR/EA and Various NEPA Documents

**Role:** Prime | **Client:** City of Fort Bragg Community Development Department | **Timeframe:** May 2009–July 2012

SWCA was retained by the City of Fort Bragg Community Development Department to prepare an EIR and EA for the North Fort Bragg Coastal Trail project. The work included preparation of various NEPA documents including a Biological Assessment, Natural Environment Study, Historic Properties Survey Report, and Historic Resources Evaluation Report. The proposed project consists of an approximately 2-mile-long section of the California Coastal Trail from Pudding Creek south to Soldiers Bay, in the city of Fort Bragg, and habitat restoration on more than 25 acres of a former lumber mill. The trail system would be located on City-owned property and a portion of McKerricher State park. There are a number of significant issues associated with this project, including biological resources, cultural resources, hydrology, and the intensive regulatory environment due to multiple project funding sources and the project location being within the jurisdiction of multiple federal and state agencies.



SWCA coordinated with the project Engineering and Design team during preparation of the project description and design project plans to avoid or minimize potential impacts early in the process and reduce subsequent mitigation requirements. The EIR was certified in August 2011, and SWCA assisted the City with the preparation of the EA. However, due to constraints outside of the City's control, the City determined to not complete the NEPA process.

## Morro Creek Multi-Use Trail and Bridge Project Biological Services

**Role:** Prime | **Client:** City of Morro Bay Public Services Department | **Timeframe:** December 2014–March 2016

SWCA was retained by the City of Morro Bay Public Services Department to provide biological services for the Morro Creek Multi-Use Trail and Bridge Project in Morro Bay. The project involved extending the existing Harborwalk with continuation of a paved pedestrian boardwalk and separate Class I bike path from the existing parking area and crossing on Embarcadero Avenue northward. The City installed a clear-span pre-engineered/prefabricated bike and pedestrian bridge over Morro Creek to connect to north Morro Bay on Embarcadero Road/State Route 41. Improvements to beach access from the trail were also included as part of the project, and two interpretive sign stations that display educational and other information about the cultural and natural history of the region were installed.



Services provided by SWCA during the construction of the project included California red-legged frog, Morro shoulderband snail, and Blochman's leafy daisy surveys; restoration; and monitoring by a qualified biologist in support of the proposed project. SWCA conducted the required surveys, an environmental awareness training session, and monitoring to ensure that biological resources were not adversely impacted by construction activities.



## Packwood Creek Trail Project Archaeological Survey Report

**Role:** Prime | **Client:** City of Visalia | **Timeframe:** September 2015–December 2015

SWCA was retained by the City of Visalia to prepare Phase I ASR for the construction of a new segment of the larger Packwood Creek Trail Complex within city limits. The project consists of designing and constructing three segments of the Packwood Creek Trail from the existing Santa Fe Trail on the west side of Santa Fe Street to Walnut Avenue, from Cedar Street and Walnut Avenue to Lover's Lane, and from Lover's Lane to Crumal Street. The new trail would consist of a 10-foot-wide asphalt and paved bike and pedestrian path with 2-foot-wide aggregate base rock shoulders on each side. The elevation of the proposed trail would be approximately 6 inches above current grade. The APE consisted of approximately 2 miles of undeveloped trail segments along the channelized course of Packwood Creek.



SWCA conducted a cultural resources records review, Native American Heritage Commission (NAHC) coordination, and an archaeological survey of the APE, and prepared the ASR in accordance with the most recent edition of the Caltrans Standard Environmental Reference (SER) *Volume 2, Cultural Resources*. The negative findings of the study resulted in Caltrans determining no further archaeological study was required for the project.

## North San Luis Obispo County Coastal Trail Constraints Analysis

**Role:** Subconsultant | **Client:** Alta Planning + Design / SLOCOG (Owner) | **Timeframe:** April 2011–June 2012

As a subconsultant to Alta Planning + Design, SWCA prepared an Environmental Constraints Analysis (ECA) addressing land use, agricultural resources, biological resources, cultural resources, and geologic hazards of a 35-mile-long section of the California Coastal Trail in San Luis Obispo County. The analysis was prepared to assist in the preservation of cultural and natural resources and to reduce the cost and time required to build trail segments in the future. The Master Plan for the trail is being prepared by the San Luis Obispo Council of Governments (SLOCOG), California Coastal Conservancy, and California Department of Parks and Recreation (State Parks).



The analysis evaluated geologic hazards including erosion of the bluffs along the trail corridor. Nearly the entire corridor is considered environmentally sensitive habitat (ESHA) by the California Coastal Commission and is home to numerous sensitive plant and animal species. SWCA mapped habitats and records of known sensitive species found in the area, conducted field verification of the data, and provided recommendations for a trail alignment that reduces potential impacts to sensitive species and minimizes disturbance to sensitive and highly regulated habitats, such as wetlands. SWCA also identified more than 1,100 survey plots and approximately 300 previously identified cultural resource sites within the project corridor, and evaluated agricultural resources and land use constraints.

## Coalinga and Fresno County Projects

### Juniper Ridge South Business Park Project IS/MND

**Role:** Prime | **Client:** City of Coalinga Community Development Department | **Timeframe:** October 2018–January 2019

SWCA was retained by the City of Coalinga to provide planning and support services for a proposal to develop a 100,000 square-foot business park on vacant land near the city limits. The project was a five-year phased project that consisted of development of five single-story, 20,000 square-foot, 24-foot-tall industrial steel-framed buildings with individual tenant spaces and associated site improvements.

SWCA prepared a comprehensive project description and prepared an IS/MND pursuant to CEQA. The client also requested that SWCA assist with preparation and support with Assembly Bill (AB) 52 Tribal Cultural noticing/consultation and the noticing/distribution of the draft IS/MND.



### Fresno County Department of Public Works and Planning On-Call Environmental Services

**Role:** Prime | **Client:** County of Fresno Department of Public Works and Planning | **Timeframe:** April 2011–present (ongoing)

SWCA has held an on-call contract with the Fresno County Department of Public Works and Planning since 2011 and has completed over 25 projects to date. These projects have included bridge replacements, traffic signal modifications, shoulder improvements, repair or replacement of bridge deck expansion joints, road reconstruction, and water supply projects.

SWCA acts as an extension of Fresno County staff by responding to on-call requests for field surveys, document preparation, agency consultation, and construction monitoring for a variety of projects. Under this contract, we, as the prime, have provided permitting assistance, conducted environmental training, sensitive species surveys, protocol-level surveys, jurisdictional delineations, and prepared various technical studies, including:

- NESs;
- NES-MIs;
- BAs;
- Biological Resources Constraints Memorandums;
- Floodplain Memorandums;
- Phase I and II ISAs;



- Farmland Conversion Impact Assessments;
- NHPA Section 106 Cultural Resources Reports;
- WQAs;
- U.S. Army Corps of Engineers (USACE) Aquatic Resource Delineation Reports;
- Visual Assessments; and
- Technical Noise Memos.

Select projects completed under this on-call contract are listed below.

PROJECT NAME	CONTRACT AMOUNT	SERVICES PROVIDED
Bridge Preventative Maintenance to Joint Seals	\$14,710	<ul style="list-style-type: none"> <li>Employee education training, setback buffer establishment, and preconstruction surveys for sensitive species for 17 bridges</li> </ul>
Travers Creek Bridge on East Lincoln Avenue Replacement	\$1,900	<ul style="list-style-type: none"> <li>Preliminary noise review, background noise research, identification of sensitive land uses, calculation of noise levels at surrounding sensitive receptors, and development of mitigation measures for bridge replacement</li> </ul>
Delta Mendota Canal Bridge on West Nees Avenue Replacement	\$1,995	<ul style="list-style-type: none"> <li>Preliminary noise review, background noise research, identification of sensitive land uses, calculation of noise levels at surrounding sensitive receptors, and development of mitigation measures for bridge replacement</li> </ul>
Wahtoke Creek Bridge on East Lincoln Avenue Replacement	\$10,424	<ul style="list-style-type: none"> <li>Phase I ISA for hazardous materials, lead and asbestos assessment, NES-MI, and WQA memorandum for bridge replacement</li> </ul>
	\$4,453	<ul style="list-style-type: none"> <li>Wetland and Other Waters Delineation and Assessment for bridge replacement</li> </ul>
	\$27,439	<ul style="list-style-type: none"> <li>Preconstruction surveys, worker environmental awareness training, California Department of Fish and Wildlife (CDFW) coordination, bat exclusion and monitoring, and revegetation plan for bridge replacement</li> </ul>
	\$18,203	<ul style="list-style-type: none"> <li>Permit application packages, preconstruction surveys, and bird and bat exclusion and monitoring for bridge replacement</li> </ul>
Jacalitos Creek Bridge on West Lost Hills Road Replacement	\$6,725	<ul style="list-style-type: none"> <li>Phase I ISA for hazardous materials and WQA memorandum for bridge replacement</li> </ul>
San Diego Avenue Shoulder Improvement	\$2,477	<ul style="list-style-type: none"> <li>San Joaquin kit fox and raptor preconstruction survey for road shoulder improvements</li> </ul>
James Bypass Bridge on West Manning Avenue Replacement	\$35,786	<ul style="list-style-type: none"> <li>Water Quality Technical Memorandum, Wetland Delineation Report, BA, NES, and Farmland Conversion Impact Rating Form for bridge replacement</li> </ul>
	\$15,859	<ul style="list-style-type: none"> <li>Protocol-level survey for federally endangered Fresno kangaroo rat and giant kangaroo rat for bridge replacement</li> </ul>
Whiskey Creek Tributary Bridge Modification	\$25,903	<ul style="list-style-type: none"> <li>Preconstruction survey and bat exclusion, post-exclusion monitoring, and reporting for temporary bridge modifications to accommodate heavy truck load traffic</li> </ul>
San Joaquin River (Redinger Lake) Bridge on Italian Bar Road Replacement	\$16,557	<ul style="list-style-type: none"> <li>Archaeological construction monitoring and vegetation removal consultation for bridge replacement</li> </ul>



## South Lake Solar Project Environmental Impact Report

**Role:** Prime | **Client:** County of Fresno Department of Public Works and Planning | **Timeframe:** September 2017–present (ongoing)

SWCA is currently preparing an EIR for an up to 80 megawatt (MW) photovoltaic solar energy facility, up to 80 MW battery storage system, and 70 kilovolt (kV) overhead generation tie line on approximately 585 acres located in western Fresno County, California. Key issues addressed in the EIR include air quality impacts resulting from construction emissions, biological impacts from the loss of Swainson's hawk foraging habitat, and the potential for cumulative impacts caused by the project.

SWCA also provided independent review of applicant-prepared studies, worked with the County to finalize the IS/Notice of Preparation (NOP) for public circulation, worked with the County of Fresno and the applicant to identify key stakeholders, and prepared a scoping report.



### *Transportation and Local Assistance Projects*

## Kern County Public Works Department On-Call Biological and Environmental Services

**Role:** Prime | **Client:** Kern County Public Works Department | **Timeframe:** November 2010–present (ongoing)

Since 2010, the Kern County Public Works Department has retained SWCA to provide environmental planning and consultant services to comply with the requirements of NEPA and CEQA. SWCA has completed over 60 federally and state-funded projects to date, which have included road improvements, road widening, repaving and shoulder construction, pedestrian improvements, and construction of new roads. SWCA acts as an extension of Public Works staff by responding to on-call requests for field surveys, document preparation, agency consultation, and construction monitoring of road projects. **As a result of our quality work and steady leadership, Kern County selected SWCA as the only firm for the current 5-year (2019–2024) contract.**



SWCA prepares technical reports and CEQA/NEPA compliance documents, such as:

- Caltrans Preliminary Environmental Analysis Reports (PEARs);
- NESs;
- NES-MIs;
- BAs;
- Noise Studies;



- USACE Aquatic Resource Delineation Reports;
- Section 4(f) Evaluations;
- Section 106 Compliance, including ASRs, HRERs, and HPSRs;
- Visual Impact Studies;
- Community Impact Assessments (CIAs); and
- Farmland Conversion Impact Rating Forms

In addition to preparing technical studies, SWCA also provides permitting assistance and conducts environmental training, sensitive species surveys, construction monitoring, and agency coordination. Select task orders (TOs) under this current (2019–2024) on-call contract are listed below; the following list is not comprehensive, and additional projects from this on-call contract can be provided upon request.

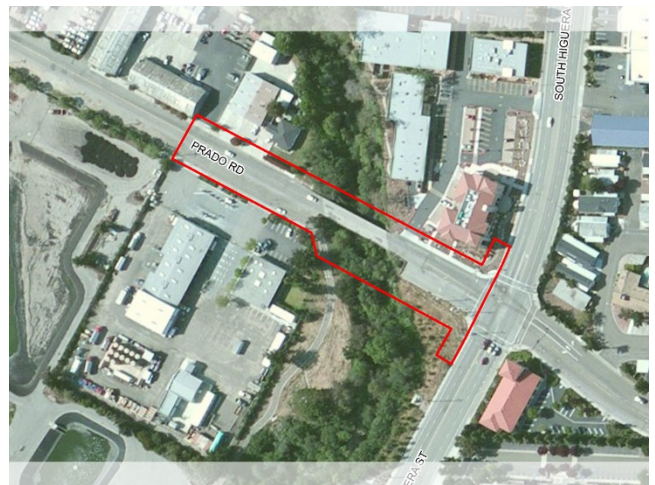
PROJECT NAME	CONTRACT AMOUNT	SERVICES PROVIDED
TO 1 - Kern River Bike Trail Extension	\$73,500	• Blunt-nosed leopard lizard preconstruction survey, compliance memo, and three training sessions for 6.3-mile-long extension of the existing trail
TO 2 - Universe Avenue from McCray Street to North Chester Avenue and Stockton Avenue from Universe to China Grade Loop Resurfacing	\$3,678	• Preconstruction survey, summary memo, and species awareness training sessions for 1 mile of pavement resurfacing
TO 3 - Patton Way Phase 2 Site Assessment	\$14,978	• Lead and asbestos survey of existing structures and delineation of contaminated soil plume
TO 4 - Mojave Transit Center Improvements	\$4,879	• Preconstruction survey of 1.5 acres of disturbed ground at intersection of Oak Creek Road and K Street and worker training during construction
TO 5 - Banducci Road Shoulder Improvements	\$3,570	• Species awareness training for 1.3-mile segment from Stallion Spring Drive to Pelliser Road
TO 6 - Rexland Acres Sidewalk Installation	\$8,045	• Aerially deposited lead survey and soil samples at 12 sampling locations
TO 7 - Vineland Road Shoulder Improvements	\$9,570	• Preconstruction survey, summary memo, and species awareness training for 1-mile segment from Edison Highway to Pioneer Drive
TO 8 - Comanche Drive Shoulder Resurfacing and Installation	\$16,879	• Preconstruction survey, summary memo, and species awareness training for 4-mile segment from Sycamore Road to Shane Court near Arvin
TO 9 - Panama Lane Shoulder Resurfacing and Installation	\$4,647	• Preconstruction survey, summary memo, and species awareness training along 4-mile segment from Enos Lane (SR 43) to Bakersfield city limits
TO 10 - Fruitvale Avenue Shoulder and Bike Lane Installation	\$4,647	• Preconstruction survey, summary memo, and species awareness training for segment from Norris Road to Snow Road
TO 11 - Kratzmeyer Road Shoulder Installation	\$4,647	• Preconstruction survey, summary memo, and species awareness training for segment from Enos Lane (SR 43) to Nord Avenue
TO 12 - Mt Vernon Avenue at Quincy Avenue Signal Improvements	\$4,647	• Preconstruction survey, summary memo, and species awareness training for signal modification
TO 13 - Breckenridge Road Shoulder Installation	\$5,991	• Preconstruction survey, summary memo, and species awareness training for segment from Monica Street to Comanche Drive
TO 14 - Metropolitan Bakersfield Habitat Conservation Plan and East Kern Desert Species Training PowerPoint Presentations	\$1,012	• Basic species awareness training for the Metropolitan Bakersfield Habitat Conservation Plan (MBHCP) area and the East Kern Desert area
TO 15 - Red Apple Avenue at Westwood Boulevard Signal Installation	\$4,879	• Preconstruction survey, summary memo, and species awareness training for three-way signal installation near Tehachapi
TO 16 - Holiday Avenue Paving	\$25,397	• Extended Phase I per Caltrans District 9 requirements for 0.5-mile segment from 60 <sup>th</sup> Street West to 65 <sup>th</sup> Street West in Rosamond

PROJECT NAME	CONTRACT AMOUNT	SERVICES PROVIDED
TO 17 - Gilmore Avenue Resurfacing	\$4,647	<ul style="list-style-type: none"> <li>Preconstruction survey, summary memo, and species awareness training for segment from SR 99 to Gibson Street in Bakersfield</li> </ul>
TO 18 - Kern River Bike Trail Extension		<ul style="list-style-type: none"> <li>Plans, Specifications, and Estimates (PS&amp;E) and construction support</li> </ul>
TO 19 - Boron Avenue Pedestrian Path Improvements	\$5,899	<ul style="list-style-type: none"> <li>Preconstruction survey and summary memo for path improvements at BNSF railroad crossing in Boron</li> </ul>
TO 20 - Taft Sanitary Landfill Ground Squirrel Burrow Excavation	\$355,660	<ul style="list-style-type: none"> <li>Biological monitoring and hand and mechanical excavation and closure of California ground squirrel burrows</li> <li>Biological clearance, orientations, and monitoring of exclusion fencing installation</li> </ul>
TO 21 - Kern County Waste Facilities Habitat Conservation Plan Compliance	\$20,000	<ul style="list-style-type: none"> <li>Continuing environmental consulting services for administrative activities required for the Kern County Waste Facilities HCP</li> </ul>

### Prado Road Bridge Widening Project Environmental Services

**Role:** Subconsultant | **Client:** Wallace Group / City of San Luis Obispo (Owner) | **Timeframe:** January 2014–present (ongoing)

SWCA was retained by Wallace Group to assist the City of San Luis Obispo with the Prado Road Bridge Widening Project in San Luis Obispo County. The primary purpose of the proposed project is to replace the structurally deficient bridge, with secondary consideration for addressing the functional obsolescence of this facility. Additional goals of the project are to provide bicycle and pedestrian facilities across the bridge, improve multimodal operations at the Prado Road/South Higuera Street intersection, and improve connectivity to the adjacent Bob Jones Bike Trail, with the option to include a north-south extension of that trail under Prado Road. The need of the project is to provide a structurally adequate bridge that safely accommodates expected multi-modal traffic.



SWCA, as part of the Wallace Group team, was retained to assist with the technical environmental studies, environmental clearance document, and permitting associated with the bridge widening. As part of our scope of services, SWCA completed a PES form following the Caltrans SER. The PES reviews the proposed project in sufficient detail to determine the various technical studies that may be required. Based on the results of the PES, SWCA will be preparing a Noise Study; biological resources studies, including a Caltrans NES/BA, Jurisdictional Waters Determination, Section 4(f) Evaluation, Visual Impact Assessment (VIA), and Section 106 compliance, including an Area of Potential Effects (APE) Map, ASR, and HPSR. SWCA will also be preparing a Conceptual Habitat Mitigation and Monitoring Plan (CHMMP)/Replanting Plan, a CEQA environmental document, and regulatory permit applications.

## Brisco Road-Halcyon Road/Highway 101 Interchange Project Environmental Services

**Role:** Subconsultant | **Client:** Wood Rodgers / City of Arroyo Grande (Owner) | **Timeframe:** March 2005–present (ongoing)

SWCA was retained by Wood Rodgers to assist the City of Arroyo Grande with the Brisco Road-Halcyon Road/U.S. 101 Interchange Modification Project in San Luis Obispo County. The project proposes removal of the existing U.S. Highway 101 (US-101) on- and off-ramps at Brisco Road and development of new ramps and a new Grace Lane/West Branch Street/US-101 ramp intersection at an adjacent location. The project would also add auxiliary lanes along the US-101 mainline, reconfigure and realign adjoining local streets, and re-configure adjacent US-101 intersections both north and south of Brisco Road. The purpose of the project is to maximize the efficiency of the existing state and local roadway systems and to provide direct access from US-101 to expanding commercial, governmental, and recreational facilities along West Branch Street.



SWCA has prepared approved drafts of the Air Quality Study; NES; Noise Study Report; Paleontological Identification Report; Section 106 compliance documents, including an ASR, HPSR, and HRER; VIA; WQA Report; and Wetland Delineation/Jurisdictional Evaluation. Administrative drafts of the CIA and IS/MND have also been completed.

## Shell Beach Road Pedestrian Safety & Streetscape Project – Phase 1 Environmental Services

**Role:** Prime | **Client:** City of Pismo Beach | **Timeframe:** October 2014–May 2016

SWCA prepared the NEPA technical studies and CEQA environmental document for the Shell Beach Road Pedestrian Safety & Streetscape Project – Phase 1, which includes the reconstruction of an 18-block section of Shell Beach Road between Cliff Avenue (Dinosaur Caves Park) and Terrace Avenue (Shell Beach Elementary) in downtown Shell Beach, San Luis Obispo County, California.

The SWCA team completed the Phase I ISA; Biological Resources Memorandum; Section 4(f) and 6(f) Evaluation; Visual Assessment Memo; Land Use and Community Impacts Assessment; NHPA Section 106 compliance documents, including an ASR, HPSR, and HRER. Due to the potential for archaeological resources to be impacted, Caltrans required that an Extended Phase I Archaeological Survey (XPI) be conducted. This required several sample plots to be excavated along the entire length of the project boundary. The XPI required preparation of the excavation plan, coordination with utility companies, excavation of approximately 20 test locations, laboratory work, and preparation of a final report. The XPI is required by Caltrans as part of the Section 106 process. The study was completed in October 2015. SWCA prepared a CEQA IS/MND which was adopted by the City Council in September 2015. SWCA also assisted the City with Regulatory Permitting, including the Coastal Development Permit and California Coastal Commission – Federal Consistency Determination.

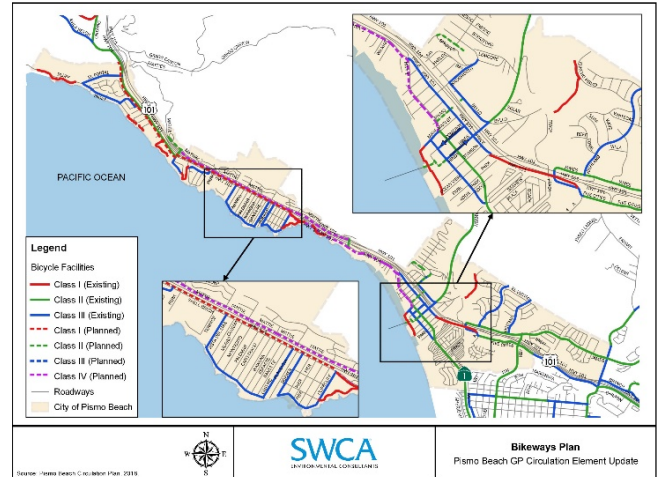




## City of Pismo Beach Circulation Element Update Initial Study/Mitigated Negative Declaration

Role: **Subconsultant** | Client: **Omni-Means / City of Pismo Beach** | Timeframe: **August 2017–May 2018**

SWCA was retained by Omni-Means on behalf of the City of Pismo Beach to prepare an IS/MND and supporting technical studies evaluating the environmental impacts of the City of Pismo Beach General Plan Circulation Element Update. The Circulation Element is one of several elements of the General Plan mandated by state planning law; periodic updating of the General Plan is a State of California legal requirement. The Circulation Element provides goals, objectives, and policy guidance for long-term planning and implementing the transportation system needed to serve the City of Pismo Beach's projected development. The goals, objectives, and policies in this element are closely correlated with the Land Use Element and other elements that comprise the General Plan, and are intended to enhance travel choices for current and future residents, visitors, and workers. This element also defines a preferred transportation system that reflects the City of Pismo Beach's financial resources and broader goals, including providing safe and convenient access for all modes of travel while preserving the local character of the community.



SWCA's team prepared the IS/MND, Air Quality and Greenhouse Gas Impact Assessment, and Noise and Groundborne Vibration Impact Assessment in support of the Circulation Element Update. Because the Circulation Element Update is a high-level planning document and considers multiple projects throughout Pismo Beach over a long-term planning period, the CEQA document, similarly, was prepared to evaluate potential environmental effects of the Circulation Element Update in a programmatic manner rather than evaluating project-specific impacts. Through preparation of the IS/MND, we identified potentially significant environmental effects in the following key issue areas: air quality, biological resources, cultural and tribal cultural resources, hazards and hazardous materials, hydrology, land use and planning, noise, transportation and traffic, and utilities and service systems. All potentially significant impacts associated with the Circulation Element Update were found to be less than significant with implementation of mitigation measures.

This project was completed under budget and on schedule. SWCA assisted the City of Pismo Beach with presenting the project at its public workshop and City Council meetings and the project was approved without delays or any other complications.

## 2. SUBCONSULTANTS

### *AMBIENT Air Quality & Noise Consulting*

#### **San Joaquin Bridge on Italian Bar Road Replacement Project**

Role: **Prime** | Client: **County of Fresno Public Works Department** | Timeframe: **Completed 2018**

The San Joaquin Bridge on Italian Bar Road Replacement Project included the replacement of a structurally deficient bridge. AMBIENT prepared the air quality, GHG, noise, and groundborne vibration impact assessments for the project. The assessment included evaluation of potential impacts to nearby sensitive receptors and recreational uses.



## Shaw Avenue Widening Between North DeWolf Avenue and North McCall Avenue Project

**Role:** Prime | **Client:** City of Clovis Planning and Development Department | **Timeframe:** Completed 2018

The Shaw Avenue Widening Between North DeWolf Avenue and North McCall Avenue Project included the widening of Shaw Avenue between North DeWolf and North McCall Avenues. The improvements included additional vehicle travel lanes, traffic noise barriers, and pedestrian improvements. AMBIENT prepared the air quality, GHG, and noise impact assessments for the project. AMBIENT also prepared traffic noise barrier analyses for the project.

## North Willow Avenue Widening Project

**Role:** Prime | **Client:** City of Clovis Planning and Development Department | **Timeframe:** Completed 2018

The North Willow Avenue Widening Project included the widening of approximately 2 miles of North Willow Avenue between Copper and Shepherd Avenues. The improvements included an additional vehicle travel lane, pedestrian improvements, and construction of stormwater detention basins. AMBIENT prepared the air quality, GHG, and noise impact assessments for the project.

## Shaw Avenue Widening Between Locan Avenue and Maine Avenue Project

**Role:** Prime | **Client:** City of Clovis Planning and Development Department | **Timeframe:** Completed 2018

The Shaw Avenue Widening Between Locan Avenue and Maine Avenue Project included the widening of Shaw Avenue between Locan and Maine Avenues. The improvements included additional vehicle travel lanes, traffic noise barriers, and pedestrian improvements. AMBIENT prepared the air quality, GHG, and noise impact assessments for the project. AMBIENT also prepared traffic noise barrier analyses for the project.

## Haro Environmental

### Fresno County Department of Public Works and Planning Initial Site Assessments

**Role:** Subconsultant | **Client:** County of Fresno Department of Public Works and Planning | **Timeframe:** Completed 2015

Haro Environmental has performed a number of Caltrans compliant ISAs consistent with ASTM standard E1527-13 to meet the requirements of the PES for the project, as well as the requirements of an ISA as defined by Caltrans in *SER Chapter 10 – Hazardous Materials, Hazardous Waste, and Contamination of the Environmental Handbook, Volume 1: Guidance for Compliance*.

The ISAs included interviews with past and present owners, operators, and occupants; review of historical sources of information, such as aerial photographs, fire insurance maps, building department records, chain of title documents, and land use records; review of government records, including regulatory reports for both the subject properties and nearby or adjoining properties; visual inspection of the subject



properties and of adjoining properties; and documentation of research, observations, and results of the environmental inquiry in a written report that specifically identifies any properties that required invasive site investigations.

Haro Environmental has prepared the following ISAs under SWCA's existing on-call contract:

- Wahtoke Creek Bridge Replacement
- Jacalitos Creek Bridge Replacement
- Bethel/Mountain View Traffic Signal Modification Intelligent Speed Adaptation
- Fruit Ave/Barstow Ave Traffic Signal Modification Intelligent Speed Adaptation
- Eight Transportation Facilities | *ATP Americans with Disabilities Act (ADA) Path Grove and Jensen, ATP Lanare Grantland to Garfield Walkway, ATP Riverdale Pedestrian Path, ATP Dunlap Elementary Crosswalk Lights and Signal, HBP James Bypass Bridge Replacement – Two Bridges, CMAQ Adams Avenue Cherry to Clovis, CMAQ Kamm Avenue from SR 145 to Jansen Avenue, CMAQ Panoche Road – Derrick to San Benito*

## Phase II Environmental Site Assessment and Asbestos-Containing Materials/Lead-Based Paint Survey

**Role:** Subconsultant | **Client:** County of Kern Public Works Department | **Timeframe:** Completed 2019

Haro Environmental, in conjunction with MS Testing Services, completed a Phase II ESA and Asbestos-Containing Materials/Lead-Based Paint (ACM/LBP) Survey for a large industrial facility in Bakersfield. A Phase I ESA prepared for the property identified the historic use of the site for oil exploration and electrical transformer storage.

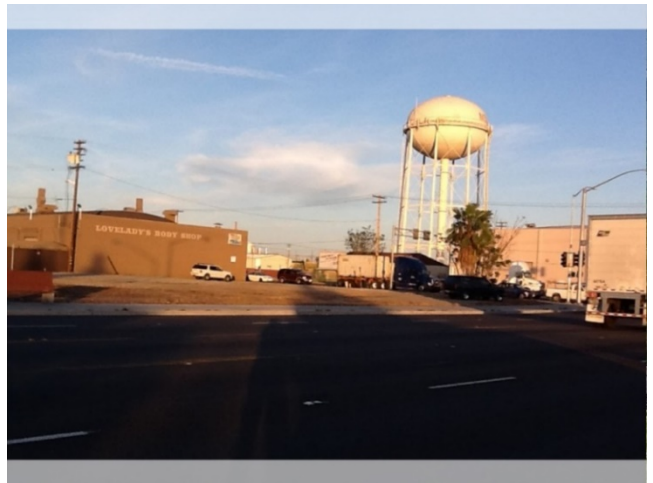
Haro Environmental performed a Phase II ESA consisting of soil sampling at several locations at the property for the possible presence of polychlorinated biphenyls (PCBs) associated with the former transformer storage. The results of the testing indicated PCB contamination was limited in extent and spot removal of PCB-impacted soil was recommended. The results of the ACM/LBP survey indicated several materials within the buildings contained elevated levels of ACM, but no LBP was found.

## Westbound D Street to Northbound 9th Street Right Turn Lane Improvements Initial Site Assessment and Preliminary Site Investigation

**Role:** Subconsultant | **Client:** City of Modesto Public Works Department | **Timeframe:** Completed 2015

A Caltrans compliant ISA was performed consistent with ASTM Standard E1527-13 to meet the requirements of the PES for the project, as well as the requirements of an ISA as defined by Caltrans in SER *Chapter 10 – Hazardous Materials, Hazardous Waste, and Contamination of the Environmental Handbook, Volume 1: Guidance for Compliance*.

The ISA included interviews with past and present owners, operators, and occupants; review of historical sources of information, such as aerial photographs, fire insurance maps, building department records, chain of title documents, and land use records; review of government records, including regulatory reports for both the subject properties and nearby or adjoining properties; visual inspection of the subject



properties and of adjoining properties; and documentation of research, observations, and results of the environmental inquiry in a written report that specifically identifies any properties that required invasive site investigations.

Based on the findings of the ISA, a PSI was performed to address the historic use of the property for railroads. Soil samples were collected and analyzed for heavy metals and petroleum hydrocarbons. The results were tabulated and a report prepared presenting the analytical data and providing recommendations for soil management.

### **Aerially Deposited Lead Study**

---

**Role:** Subconsultant | **Client:** Quincy Engineering / County of San Luis Obispo Public Works Department | **Timeframe:** Completed 2019

---

The ADL study included a sampling and analysis plan, soil sampling and testing, data evaluation and statistical analysis, and report preparation. The results of the ADL sampling were compared to hazardous waste threshold criteria to determine if the soils could be reused on-site or required off-site disposal. The results of the ADL indicated soils could be reused on-site, and no off-site disposal was required.

### 3. PROJECT APPROACH AND SCHEDULE

#### A. PROJECT UNDERSTANDING AND APPROACH

The City is proposing to move forward with the design and implementation of portions of Segments 3, 4, and 9 of the City of Coalinga Trails Master Plan (TMP) using ATP (federal and state) funding. The City will serve as the CEQA Lead Agency and Caltrans will serve as the Federal Lead Agency for NEPA under their FHWA delegation authority working with Caltrans District 6 Local Assistance.

#### B. SCOPE OF SERVICES

The following scope of services identifies the tasks SWCA will complete to prepare an IS/MND and required technical studies that are independent, objective, and unbiased. Our project team has a reputation and long-demonstrated capacity to prepare neutral and unbiased environmental documents. Our team would apply this high level of integrity and independent judgement to the IS/MND for the proposed project.

##### 1. TASK 1: INFORMATION REVIEW AND CALTRANS OUTREACH

Following receipt of notice to proceed (NTP), SWCA staff will review all background documents, project documents, and project design plans available. After reviewing all available project documentation, we propose to coordinate with the City to reach out to Caltrans first to inquire if Caltrans staff see an issue with independent utility/logical termini associated with the project as proposed.

If Caltrans identifies a problem related to clear independent utility/logical termini associated with the proposed project, SWCA's project management team—including [SWCA Senior NEPA Specialist and QA/QC Reviewer Gary Ruggione](#), a former Caltrans District 5 Local Assistance Branch Chief—will collaborate with the City to modify the proposed project to ensure independent utility/logical termini is clearly achieved.

Based on our review of the RFP and TMP (specifically Exhibit 1), it appears that Segments 3 and 4 could be shown to have logical termini and independent utility because, together, they connect a residential area on the northwest side of Coalinga with downtown Coalinga. However, the portion of Segment 9 is located on the south side of Coalinga may not provide connectivity from the adjacent residential area to a specific resource, which could pose a logical termini/independent utility problem. A possible modification to the proposed project to avoid a potential issue related to logical termini and independent utility could include incorporating complete Segment 9 and Segment 10 to provide clear connectivity and logical termini/independent utility between the adjacent residential area and Keck Park. SWCA will coordinate with the City, and Caltrans as necessary, to ensure the project description satisfies the requirements of independent utility/logical termini prior to finalizing the project description under Task 2, below, to avoid the potential for unnecessary revisions to project description and technical studies later in the project timeline.

In addition, based on our review of the proposed project, and our understanding of the cultural resources sensitivity and setting of the area, we believe there is the potential that Caltrans will not require the full suite of cultural resources documentation outlined below in Task 5.2. The project may fall under the provisions detailed in Attachment 2 (Screened Undertakings) of the Caltrans Programmatic Agreement (PA), released in 2014. Screened undertakings are classes of undertakings that have the potential to affect historic properties, but following appropriate screening, may be determined exempt from further NHPA Section 106 review under the PA. The addition of bike lanes and pedestrian walkways is listed as a project type that may be screened. The level of effort to screen a project under the PA is commensurate with the scale of the undertaking and is up to the discretion of the Caltrans Professionally Qualified Staff assigned to the project. If the project can be screened, the level of effort, schedule, and costs associated with Task 5.2 may be significantly reduced.



## 2. TASK 2: PROJECT DESCRIPTION

Following NTP and feedback from Caltrans related to the independent utility/logical termini question, SWCA will coordinate with the City to determine if any modifications to the project description are necessary prior to preparing the draft project description for review. Once the project details have been finalized, SWCA will prepare a request for information (RFI) for any additional information necessary to incorporate into the project description. SWCA will prepare a thorough draft project description for review by the City based on the project plans (as available or modified, as necessary) and documentation, as well as any additional information provided by the project team. The project description will also include any details pertinent to CEQA analysis. Upon receipt of comments on the draft submittal, SWCA will finalize the project description and prepare a revised draft for Caltrans review.

## 3. TASK 3: PRELIMINARY ENVIRONMENTAL STUDY FORM

SWCA will prepare a PES Form, using the most updated version available on the Caltrans SER, which is required for all Local Assistance projects. The content of the PES will be populated with information that would have been gathered during preparation of the TMP, and the PES will provide sufficient information to determine the environmental issues to be addressed and the evaluations and/or studies that must be undertaken for CEQA/NEPA environmental clearance. Sections A–G of the PES must be completed, and an early coordination meeting with the City and Caltrans District Local Assistant Engineer (DLAE) will be requested. In addition to the DLAE, SWCA recommends that Caltrans District Environmental Branch staff attend to ensure continuity of information and concurrence from Caltrans expectations with respect to the technical studies required, report format, and content, and an agreement on processing procedures and timing. This task includes a site visit and participation in the early coordination meeting with Caltrans (anticipated to be via conference call) by the [SWCA Project Manager Jacqueline Markley](#) and [SWCA Project Director Emily Creel](#).

## 4. TASK 4: INITIAL STUDY

### Task 4.1: Administrative Draft IS/MND

SWCA will prepare the Administrative Draft IS/MND using the City's preferred template; preparation of the CEQA IS Checklist will include an assessment of all resources as required by State CEQA Guidelines Appendix G. The environmental analysis will incorporate all previously prepared technical studies and any information provided by the City, its subconsultants, or other agencies. Project-specific air emissions will be quantified using the California Emission Estimator Model (CalEEMod), and output spreadsheets will be attached to the IS/MND. Additional background information will be obtained from the City of Coalinga General Plan, the TMP and applicable planning documents, resource agency online documents, and our in-house library.

The Administrative Draft IS/MND will be written in language understandable to the public and decision makers, and will utilize graphics and tables to clearly present information. It will be concise and focus on the most important issues identified through public and/or internal scoping. Key issue areas are anticipated to include biological resources, noise, and temporary construction-related impacts. The IS/MND will include a Mitigation Monitoring and Reporting Program (MMRP), which will identify each mitigation measure, the appropriate milestone or timing to implement the measure, the responsible party, and any reporting requirements.

### Task 4.2: Draft IS/MND and CEQA Noticing

This task assumes up to two rounds of City and/or Caltrans review and revision for all sections of the IS/MND. Following receipt of comments from the City and/or Caltrans, SWCA will finalize the Draft IS/MND and MMRP for public review and circulation. SWCA will prepare all required CEQA notices, including the Notice of Intent to Adopt a Mitigated Negative Declaration (NOI), Summary Form for State Clearinghouse submittal, and the Notice of Completion (NOC). SWCA will submit electronic copies of the Draft IS/MND, MMRP, and notices and assumes the City will reproduce the IS/MND and submit to all agencies and interested parties identified on a City-approved mailing

list, including the State Clearinghouse for circulation. SWCA assumes the City will be responsible for all public noticing, such as onsite posting, newspaper advertisement listing, and filing the NOC with the County Clerk (or as modified by recent emergency-related Executive Orders).

#### **Task 4.3: Response to Comments and Final IS/MND**

After the close of the 30-day public comment period on the Draft IS/MND, SWCA will review agency and public comments received by the City and Caltrans. Although not strictly required by CEQA for an MND, if requested by the City, SWCA will prepare written responses to substantive comments received on the IS/MND for the administrative record and to inform decision makers. SWCA assumes no more than 10 substantive comments will require responses. SWCA will incorporate any necessary clarifications and edits and prepare the Final IS/MND and MMRP. SWCA will prepare a draft Notice of Determination (NOD) for the City's review and assumes the City will file the NOD at the Fresno County Clerk's Office upon final project determination. This task does not include payment of California Department of Fish and Wildlife (CDFW) CEQA Environmental Document Filing Fees or Fresno County Clerk processing fees.

### **5. TASK 5: ANTICIPATED TECHNICAL STUDIES**

At a minimum, SWCA will prepare the following technical studies that are anticipated to be identified in the PES.

#### **Task 5.1: Natural Environment Study – Minimal Impacts**

SWCA understands biological resources, including wetlands and special-status species, were considered during preparation of the TMP and wetlands were found to be present in the vicinity of Segments 3 and 4 and the following 22 special-status species are considered to have the potential to occur in the city of Coalinga:

- great Valley Mesquite Scrub
- pale-yellow layia (California Native Plant Society [CNPS] Rank 1B.1)
- San Joaquin woollythreads (Federal Endangered)
- forked fiddleneck (CNPS Rank 4.2)
- California jewelflower (Federal Endangered, State Endangered)
- Hoover's eriastrum (CNPS Rank 4.2)
- Recurved larkspur (CNPS Rank 1B.2)
- Northern California legless lizard (State Species of Special Concern [SSC])
- California glossy snake (State SSC)
- San Joaquin coachwhip (State SSC)
- blunt-nosed leopard lizard (Federal Endangered, State Endangered)
- Hopping's blister beetle (CDFW Special Animal)
- Morrison's blister beetle (CDFW Special Animal)
- tricolored blackbird (State Threatened)
- LeConte's thrasher (State SSC)
- burrowing owl (State SSC)
- Swainson's hawk (State Threatened)
- short-nosed kangaroo rat (State SSC)
- western mastiff bat (State SSC)
- American badger (State SSC)
- San Joaquin kit fox (Federal Endangered, State Threatened)
- San Joaquin pocket mouse (State SSC)

SWCA will evaluate the presence/absence of sensitive botanical and wildlife resources and provide the findings in an NES-MI. The NES-MI will consist of an impact analysis of the sensitive biological resources with potential to occur within the project impact area. In preparation of this proposal, SWCA has reviewed the existing data and conducted an updated review of species that would need to be evaluated for this project. This list of species was acquired through a 5-mile radius search of the project impact area, using the CDFW California Natural Diversity Database (CNDDB) and a query of the U.S. Fish and Wildlife Service (USFWS) Information for Planning and Consultation (IPaC) database.

In support of the NES-MI, SWCA would request an official species list from the USFWS, which lists all federal species that would need to be taken into consideration. SWCA will also reach out to the Caltrans District Biologist to request that Caltrans submit a request for a species list from the National Oceanic and Atmospheric Administration (NOAA) National Marine Fisheries Service (NOAA Fisheries) as a matter of protocol, even though we do not anticipate any impacts to sensitive aquatic species. This is a recent required protocol of Caltrans and may be subject to change in the future by NOAA. Per Caltrans requirements, the official species lists must be acquired within 6 months of submitting the NES-MI for review.

Following the database search and literature review, a field survey will be conducted to provide baseline information on vegetation communities, habitat types, and plant and wildlife species in the study area. Resources identified during field surveys will be mapped with Global Positioning System (GPS)/Geographic Information System (GIS) and will be overlain on plans and/or aerials provided by the City.

In order to comply with agency guidelines for botanical resources, SWCA will conduct two floristic botanical surveys in order to accommodate the range of blooming periods (i.e., the identification periods) for the special-status plant species with potential to occur within the study area. Botanical surveys will follow the applicable guidelines from the USFWS publication General Rare Plant Survey Guidelines and the CDFW publication Guidelines for Assessing the Effects of Proposed Projects on Rare, Threatened, and Endangered Plants and Natural Communities. Reconnaissance wildlife surveys will be conducted concurrently with the botanical surveys to add to the previous botanical and wildlife inventory.

Topics of discussion in the NES-MI will include a description of each project alternative currently under consideration; regulatory overview; study methods; documentation of existing conditions; special-status plant and animal species, sensitive habitats, and jurisdictional features (wetlands/other waters) with potential for occurrence; evaluation of permanent, temporary, direct, indirect, and cumulative impacts; and recommended avoidance and minimization measures. The NES-MI will also adequately address invasive plant species as required by Executive Order 13112.

SWCA feels our team is particularly well qualified to prepare the NES-MI in the most efficient manner possible. Our staff have prepared and are currently preparing several NES-MI documents for various local agency clients, and our biologists prepared NES-MIs directly for Caltrans under a 9-year staff augmentation contract with Caltrans District 5. SWCA has a very thorough understanding of the NES-MI template and requirements. To maintain a high level of efficiency, SWCA would use existing documents from the area to the extent feasible, which would be primarily used as reference to capture existing data on species occurrences in the region. SWCA will compile information from these individual studies and will use the most current Caltrans SER template available to prepare the Draft NES-MI for submittal to Caltrans.

### ***Task 5.2: Cultural Resources Studies***

The following studies are included in case Caltrans does not consider the screening approach appropriate for this project.

#### **Task 5.2.1: Archaeological Survey Report**

##### ***Area of Potential Effects Mapping Assistance***

SWCA will prepare an APE map that includes a delineation of the area of direct impact and area of indirect effects. The map will depict existing and proposed right-of-way, staging areas, and the location of any cultural resources identified in the APE. The map will be created at a scale of 1":200' and printed on 11 × 17 sheets. SWCA assumes no more than one revision of the map will be required based on comments from Caltrans.

### **Records Search**

SWCA will conduct a records search for the project area at the California Historical Resources Information System's (CHRIS) Southern San Joaquin Valley Information Center (SSJVIC), located at the California State University Bakersfield. SWCA assumes that Caltrans will require a 1-mile search radius. SWCA further assumes that the records search will be completed at the SSJVIC for a maximum direct cost of \$900.00 and will be conducted at standard rates. If rush rates are required, then a Change Order may be necessary.

### **Native American Coordination**

Pursuant to 36 Code of Federal Regulations (CFR) Section 800.4(a)(3), preparation of the ASR and HPSR will include coordination with up to 20 local Native American individuals and groups who may have knowledge of, or concerns about, Native American resources in the area. SWCA will initiate this task by contacting the NAHC to request a Sacred Lands File search and to request a list of Native American contacts. Upon receipt of the Sacred Lands File search, SWCA will prepare and mail letters to each of the NAHC-listed contacts, requesting information, in writing, concerning any Native American religious or cultural resources within or immediately adjacent to the project area. Up to two telephone calls will be made to each of the Native American groups on the NAHC list to document good-faith efforts at follow-up. This consultation is for NHPA Section 106 purposes only. SWCA assumes that the City will conduct Native American consultation as required by AB 52.

### **Archaeological Survey Report**

SWCA will conduct an intensive-level archaeological survey of the area of direct impacts. SWCA will survey the APE and prepare updates to the California Department of Parks and Recreation (DPR) 523 Series forms for the portion of the site within the APE. No testing or excavation will be conducted, nor will any artifacts, samples, or specimens be collected during the survey.

Upon completion of the field survey, SWCA will prepare the ASR according to Caltrans' current guidance as specified in the SER. The ASR will document the results of the records search, Native American scoping, and field survey. The report will include maps depicting the area surveyed for cultural resources. Locations of sensitive archaeological sites or Native American cultural resources may be depicted or described in the report and will be considered confidential; therefore, the report may not be distributed to the public. This report will be submitted to the City and Caltrans for review.

SWCA assumes that no archaeological resources will be encountered; any additional previously unrecorded or newly recorded archaeological resources identified during the records search or survey would require a change order for formal recordation. The survey area will be limited to the direct APE. SWCA assumes that preparation of the ASR will not require more than one revision based on comments from Caltrans or the City.

### **Task 5.2.2: Historic Resources Evaluation Report**

SWCA understands that portions of the areas surrounding the APE were historically developed, and historical resources may be required to be evaluated as part of the cultural resource studies. SWCA understands that several prior studies (including those prepared for Caltrans for work along State Route 99) have been conducted within and near the APE, which upon receipt of the records search effort described previously, will be reviewed for adequacy and applicability to the current project. The following is a basic summary of steps taken to complete the HREER.

### **Local Governments/Local Historic Group Coordination**

Pursuant to 36 CFR 800.4(a)(3), documentation will include coordination with up to five individuals and organizations who may have knowledge of, or concerns with, historic properties in the area. Coordination will include inquiries to local governments and historic groups regarding their knowledge of historic properties in the immediate vicinity of the APE. Up to two telephone calls will be made to each of the groups to document "good-faith" efforts of follow-up.



### ***Built Environment Survey, Archival Research, and California Department of Parks and Recreation Forms***

Our qualified architectural history team—led by [SWCA Senior Architectural Historian Paula Carr](#), a former Caltrans Senior Architectural Historian—is highly familiar with the *SER Volume 2, Cultural Resources: Exhibit 1.1*, which outlines the 2014 Caltrans PA. In addition to providing guidance for the assessment of effects to historic properties, the Caltrans PA provides evaluation exemptions for various types of properties within the APE, including those that visibly lack integrity.

Per Caltrans requirements, SWCA qualified architectural historians will direct an intensive-level survey of the entire APE to identify and document previously unrecorded historic properties that may be impacted by the proposed project. For the purposes of this proposal and cost estimate, SWCA assumes that the APE will include the direct project footprint and any adjacent buildings, structures, or objects. During the survey, architectural historians will record each property address within the APE using tablet computers prepopulated with relevant data about the project area and its setting to streamline and accelerate the field recordation process. Field documentation will also include digital photographs of each property to support field observations. Following the field survey, archival research will be conducted to ascertain the age, alterations, and significance of each architectural resource. The archival research will entail a review of historic documents, records, and photographs for information about each property and resources that may be contained therein. Properties that are found to be significantly altered and no longer contain sufficient integrity to convey their historical significance will be exempted from further study, in accordance with the Caltrans PA. Details of these properties and the justification for their exemption will be presented to the Caltrans reviewer for concurrence.

Properties that do not qualify for exemption in accordance with the Caltrans PA will be formally recorded on individual DPR Series 523 forms and will be evaluated for listing in the National Register of Historic Places (NRHP) and California Register of Historical Resources (CRHR), and for local listing. SWCA understands that the project area is highly urbanized with buildings older than 45 years of age, some of which have not been previously evaluated for historical significance. SWCA assumes that a maximum of four properties containing buildings of historic age, that cannot be exempted in accordance with the Caltrans PA, are located within the project area and would require recordation on DPR forms. Should additional resources older than 45 years be identified within the project area, SWCA would request a change order to conduct the additional work.

### ***Historical Resources Evaluation Report***

Upon completion of the APE map, coordination with local historical groups, and the built environment survey and archival research, SWCA will prepare an HRER. The HRER will be prepared according to current guidance as specified in Caltrans *SER Volume 2*. SWCA assumes only one revision to the HRER will be required.

### ***Task 5.2.3: Historic Property Survey Report***

Upon completion of the ASR, SWCA will prepare a short-format Caltrans HPSR according to Caltrans' current guidance, as specified in the *SER*. The HPSR is the overarching document that summarizes the results of the cultural resources investigation; it will include a project description; a description of the APE; details of coordination with Native American groups/individuals, local government, and historic groups; a summary of identification efforts; information regarding any properties identified within the APE; a list of attached documentation; and the findings of the study. SWCA assumes that only one revision to the HPSR will be required. If the project APE is found to contain historic properties, as described under NHPA Section 106, additional cultural studies would become necessary, SWCA has provided additional budget to include up to four additional resources.

### ***Task 5.3: Phase I Initial Site Assessment***

Haro Environmental will prepare a Phase I ISA consistent with ASTM Standard E1527-13, *Standard Practice for Environmental Site Assessments* and Caltrans *SER Environmental Guidance Handbook, Volume 1, Chapter 10*

*Hazardous Materials, Hazardous Waste, and Contamination, Initial Site Assessment.* The purpose of the ISA is to evaluate the potential for soil or groundwater contamination from current or past use, storage, and/or handling of hazardous materials on or near the project area. To evaluate the potential for hazardous materials, Haro Environmental will research the past land use near the project area through aerial photographs, oil and gas well maps, interviews, and other records.

Haro Environmental will prepare a report summarizing the results of the ISA, which will present the findings regarding past land use on and around the project area, an opinion regarding the potential for soil or groundwater contamination potentially affecting the project area, the potential for lead-based paint and asbestos, and recommendations for additional assessment, if deemed necessary. The collection and analysis of any media (e.g., soil, groundwater) is not a part of this scope. Based on the findings of the ISA, recommendations for additional assessment including a PSI will be provided, if warranted.

## **6. TASK 6: ADDITIONAL TECHNICAL STUDIES**

Based on our previous experience with Caltrans Local Assistance projects (including trails projects), SWCA anticipates the following additional technical study may be identified once the PES is completed and may be needed to complete the CEQA Analysis for the project as proposed. If the project is modified to include Segment 10 to address the potential independent utility/logical termini issue, it may require Section 4(f) evaluation due to the proximity to Keck Park. We have not included Section 4(f) evaluation under this scope but can modify our scope to include that task should the City decide to modify the proposed project to include Segment 10.

### ***Task 6.1: Noise Technical Memorandum***

Due to the proximity to sensitive noise receptors from the project site, it is likely a Noise Technical Memorandum will be identified in the PES as being required for this project. If required, SWCA will prepare a technical memorandum to evaluate short-term construction impacts associated with the proposed project. The technical memorandum will include a description of the existing noise environment, based on existing environmental documentation and a review nearby noise-sensitive land uses and existing ambient noise levels in the project vicinity.

Noise impacts associated with the proposed project are anticipated to be primarily associated with short-term construction-related activities. To assess potential construction noise impacts, sensitive receptors, and their relative exposure to the proposed project areas (considering topographic barriers and distance) will be identified. Predicted construction-generated noise levels will be quantified, and construction-generated noise levels at the nearest land uses will be identified and summarized in the memorandum. Evaluation of long-term noise impacts is not anticipated to be required and is not included.

The significance of noise impacts will be assessed in comparison to applicable standards. Mitigation measures will be identified for significant and potentially significant impacts, if necessary.

### ***Task 6.2: Visual Impact Assessment Checklist Memorandum***

SWCA proposes to determine if and to what extent the proposed project might be visible from Key Viewing Areas (KVAs) and determine the extent of any visual impacts when compared to existing conditions. SWCA would utilize the Caltrans Visual Impact Assessment (VIA) Guide to determine the level and type of visual impact assessment that would be required for the project. Itemized responses to the checklist set forth in the VIA Guide would be provided, including project-specific details supporting each response. After completion of the VIA checklist, the final project score will be compared to established thresholds to determine whether additional visual analysis, scoping, photo simulations, public review, or impact and mitigation discussion would be necessary.

It is not anticipated that significant visual impacts would result from the project. Included in this scope of work are a field analysis including photographic documentation of existing conditions (conducted during the PES site visit,

completion of the VIA checklist including itemized responses to each question, and consultation with the City and Caltrans regarding the need for any additional visual assessment (if any). Based on the project setting, the project is not expected to require a Minor VIA, Moderate VIA, or Advance/Complex VIA; however, should review of the project indicate that a more fully developed VIA is required, SWCA could complete the additional analysis under a contract amendment.

## C. SCHEDULE

SWCA is prepared to initiate this scope of work immediately after receiving a signed contract and NTP. Following completion of Task 1, SWCA will submit a request for information to the City identifying any additional project information needed prior to commencing preparation of the PES. SWCA will commence the scope of work described above immediately following NTP (Table 2).

**Table 2. Proposed Schedule**

MILESTONE	TIMEFRAME
<b>TASK 1: INFORMATION REVIEW AND CALTRANS OUTREACH</b>	
Task 1: Information Review and Caltrans Outreach	2 weeks following NTP
<b>TASK 2: PROJECT DESCRIPTION</b>	
Task 2: Project Description	2 weeks following response to RFI and Caltrans Outreach
<b>TASK 3: PRELIMINARY ENVIRONMENTAL STUDY FORM</b>	
Task 3: Preliminary Environmental Study Form	2 weeks following approval of Project Description
<b>TASK 4: INITIAL STUDY</b>	
Task 4.1: Administrative Draft IS/MND	30 days following completion of technical studies
Task 4.2: Draft IS/MND and CEQA Noticing	2 weeks following receipt of comments on Admin IS/MND
Task 4.3: Response to Comments and Final IS/MND	2 weeks following close of 30-day public review period
<b>TASK 5: ANTICIPATED TECHNICAL STUDIES</b>	
Task 5.1: Natural Environment Study – Minimal Impacts	4–6 weeks <sup>1</sup>
Task 5.2: Cultural Resources Studies	
Task 5.2.1: Archaeological Survey Report	8–12 weeks <sup>2</sup>
Task 5.2.2: Historic Resources Evaluation Report	8–12 weeks <sup>2</sup>
Task 5.2.3: Historic Property Survey Report	8–12 weeks <sup>2</sup>
Task 5.3: Phase I Initial Site Assessment	4–6 weeks
<b>TASK 6: ADDITIONAL TECHNICAL STUDIES (OPTIONAL)</b>	
Task 6.1: Noise/Groundborne Vibration Technical Memorandum	4–6 weeks <sup>1</sup>
Task 6.2: Visual Impact Assessment Checklist Memorandum	4–6 weeks <sup>1</sup>

<sup>1</sup> Schedule will commence once requested data is obtained.

<sup>2</sup> This schedule assumes no delays due to receipt of records search results or delays in response from the NAHC. For a project of this size, the typical response time from the SSJVIC and the NAHC is 2–3 weeks. In the event requests are received sooner than the typical 3-week timeframe, it is possible this study may be completed before the estimated 45 days. This schedule may also vary depending on travel restrictions related to COVID-19.

## 4. ANTICIPATED BUDGET

SWCA has prepared the following budget based on our approach to the project, identified key assumptions, consultation with our technical experts, and our experience with similar projects. The cost estimate presented in Table 3 below includes the tasks required to complete the PES, technical studies, and IS/MND. SWCA's estimate for completion of the scope of work described above is a time-and-materials (T&M) not-to-exceed (NTE) total of **\$68,477 (not including optional tasks)**, anticipated to be billed monthly as work is being completed.

**Table 3. Cost Estimate**

PROJECT ROLE	NAME	RATE	HOURS	ESTIMATED COST
<b>TASK 1: INFORMATION REVIEW AND CALTRANS OUTREACH</b>				
Project Director	Emily Creel	\$171	4	\$684
Project Manager	Jacqueline Markley	\$153	8	\$1,224
Cultural Resources Team Lead	Leroy Laurie	\$153	4	\$612
NEPA Specialist and QA/QC Reviewer	Gary Ruggerone	\$131	4	\$524
<b>Task 1 Subtotal</b>				<b>\$3,044</b>
<b>TASK 2: PROJECT DESCRIPTION</b>				
Project Director	Emily Creel	\$171	2	\$342
Project Manager	Jacqueline Markley	\$153	16	\$3,672
NEPA Specialist and QA/QC Reviewer	Gary Ruggerone	\$131	2	\$262
GIS/CADD Specialist	Kevin Howen	\$109	4	\$436
Technical Editor	Jaimie Jones	\$119	2	\$238
<b>Task 2 Subtotal</b>				<b>\$3,464</b>
<b>TASK 3: PRELIMINARY ENVIRONMENTAL STUDY FORM</b>				
Project Director	Emily Creel	\$171	8	\$1,368
Project Manager	Jacqueline Markley	\$153	12	\$1,836
NEPA Specialist and QA/QC Reviewer	Gary Ruggerone	\$131	2	\$262
Cultural Resources Team Lead	Leroy Laurie	\$153	2	\$306
Natural Resources Team Lead	Jon Claxton	\$187	2	\$374
<i>Direct Expenses (Mileage)</i>				\$291
<b>Task 3 Subtotal</b>				<b>\$4,437</b>
<b>TASK 4: INITIAL STUDY</b>				
Project Director	Emily Creel	\$171	4	\$684
Project Manager	Jacqueline Markley	\$153	20	\$3,060
Environmental Planner	Cassidy Williams	\$109	72	\$7,848
GIS/CADD Specialist	Kevin Howen	\$109	6	\$654
Technical Editor	Jaimie Jones	\$119	16	\$1,904
Ambient Air Quality and Noise Consulting (CalEEMod Modeling)		\$1,800	N/A	\$1,800
<b>Task 4 Subtotal</b>				<b>\$15,950</b>



PROJECT ROLE	NAME	RATE	HOURS	ESTIMATED COST
<b>TASK 5: ANTICIPATED TECHNICAL STUDIES</b>				
<b>TASK 5.1: NATURAL ENVIRONMENT STUDY – MINIMAL IMPACTS</b>				
Project Manager	Jacqueline Markley	\$153	2	\$306
Natural Resources Team Lead	Jon Claxton	\$187	8	\$1,496
Biologist	Geoff Hoetker	\$153	50	\$7,650
GIS/CADD Specialist	Kevin Howen	\$109	6	\$654
Technical Editor	Jaimie Jones	\$119	8	\$952
<i>Direct Expenses (Mileage)</i>				\$145
<b>Task 5.1 Subtotal</b>				<b>\$11,203</b>
<b>TASK 5.2: CULTURAL RESOURCES STUDIES</b>				
<b>TASK 5.2.1: ARCHAEOLOGICAL SURVEY REPORT</b>				
Project Manager	Jacqueline Markley	\$153	2	\$306
Principal Investigator	Heather Gibson	\$210	4	\$840
Cultural Resources Team Lead	Leroy Laurie	\$153	30	\$4,590
GIS/CADD Specialist	Kevin Howen	\$109	4	\$436
Technical Editor	Jaimie Jones	\$119	4	\$476
<i>Direct Expenses (Mileage and Records Search)</i>				\$720
<b>Task 5.2.1 Subtotal</b>				<b>\$7,368</b>
<b>TASK 5.2.2: HISTORIC RESOURCES EVALUATION REPORT</b>				
Project Manager	Jacqueline Markley	\$153	2	\$306
Principal Investigator	Heather Gibson	\$210	4	\$840
Cultural Resources Team Lead	Leroy Laurie	\$153	2	\$306
Architectural Historian	Paula Carr	\$153	80	\$12,240
GIS/CADD Specialist	Kevin Howen	\$109	8	\$872
Technical Editor	Jaimie Jones	\$119	8	\$952
<b>Task 5.2.2 Subtotal</b>				<b>\$15,516</b>
<b>TASK 5.2.3: HISTORIC PROPERTY SURVEY REPORT</b>				
Project Manager	Jacqueline Markley	\$153	2	\$306
Principal Investigator	Heather Gibson	\$210	4	\$840
Cultural Resources Team Lead	Leroy Laurie	\$153	2	\$306
Architectural Historian	Paula Carr	\$153	8	\$1,224
GIS/CADD Specialist	Kevin Howen	\$109	4	\$436
Technical Editor	Jaimie Jones	\$119	4	\$476
<b>Task 5.2.3 Subtotal</b>				<b>\$3,588</b>
<b>TASK 5.3: PHASE I INITIAL SITE ASSESSMENT</b>				
Project Manager	Jacqueline Markley	\$153	2	\$306
Haro Environmental		\$3,000	N/A	\$3,600
<b>Task 5.3 Subtotal</b>				<b>\$3,906</b>

PROJECT ROLE	NAME	RATE	HOURS	ESTIMATED COST
<b>TASK 6: ADDITIONAL TECHNICAL STUDIES (OPTIONAL TASK)</b>				
<b>TASK 6.1: NOISE TECHNICAL MEMORANDUM</b>				
Project Manager	Jacqueline Markley	\$153	2	\$306
Environmental Planner	Cassidy Williams	\$109	24	\$2,616
GIS/CADD Specialist	Kevin Howen	\$109	4	\$436
Technical Editor	Jaimie Jones	\$119	2	\$238
<i>Optional Task 6.1 Subtotal</i>				<b>\$3,596</b>
<b>TASK 6.2: VISUAL IMPACT ASSESSMENT CHECKLIST MEMORANDUM</b>				
Project Manager	Jacqueline Markley	\$153	4	\$612
NEPA Specialist and QA/QC Reviewer	Gary Ruggerone	\$131	2	\$262
Environmental Planner	Cassidy Williams	\$109	16	\$1,744
Technical Editor	Jaimie Jones	\$119	1	\$119
<i>Optional Task 6.2 Subtotal</i>				<b>\$2,737</b>
<b>PROJECT TOTAL (NOT INCLUDING OPTIONAL TASKS)</b>				<b>\$68,477</b>
<b>PROJECT TOTAL (INCLUDING OPTIONAL TASKS)</b>				<b>\$74,810</b>

## A. ASSUMPTIONS

For budgeting purposes, we are making the following assumptions because some of these items are beyond SWCA's control and because these factors could significantly affect project schedule and cost:

1. SWCA assumes all copies of report submittals will be electronic.
2. SWCA assumes presence at in-person meetings will not be necessary for this project.
3. SWCA assumes the City will provide all background materials, including any partial design plans and requested information, prior to SWCA commencing field work or preparation of technical studies.
4. SWCA assumes two rounds of review by the City and/or Caltrans for each deliverable.

## 5. REFERENCES

The following are references for projects of a similar size and scope to those anticipated for the proposed project (see **Section 2.C, Relevant Project Experience**). Additional references are available upon request.

### A. SWCA ENVIRONMENTAL CONSULTANTS

COUNTY OF KERN PUBLIC WORKS DEPARTMENT			
Contact:	Yolanda Alcantar, Public Works Manager	Phone: 661.862.8850	Email: <a href="mailto:yolandar@co.kern.ca.us">yolandar@co.kern.ca.us</a>
Project:	Kern River Parkway Bike Trail, Western Extension		
COUNTY OF FRESNO PUBLIC WORKS DEPARTMENT			
Contact:	Alexis Rutherford, Interim Senior Staff Analyst	Phone: 559.600.4530	Email: <a href="mailto:arutherford@co.fresno.ca.us">arutherford@co.fresno.ca.us</a>
Project:	County of Fresno Public Works Department On-Call Professional Environmental Services		
COUNTY OF SAN LUIS OBISPO PARKS AND RECREATION DEPARTMENT			
Contact:	Shaun Cooper, Senior Park Planner	Phone: 805.781.5930	Email: <a href="mailto:secooper@co.slo.ca.us">secooper@co.slo.ca.us</a>
Project:	Kern River Parkway Bike Trail, Western Extension		

### B. SUBCONSULTANTS

#### 1. AMBIENT AIR QUALITY & NOISE CONSULTING

CITY OF FRESNO PUBLIC WORKS DEPARTMENT			
Contact:	Mike Holly, Engineering Division	Phone: 559.621.8701	Email: <a href="mailto:michael.holly@fresno.gov">michael.holly@fresno.gov</a>
Project:	Peach Avenue Widening between Kings Canyon Road and Belmont Avenue Project		

CITY OF CLOVIS PLANNING & DEVELOPMENT DEPARTMEN			
Contact:	Ryan Burnett, AICP, Engineering Program Supervisor	Phone: 559.324.2350	Email: <a href="mailto:ryanb@cityofclovis.com">ryanb@cityofclovis.com</a>
Project:	Shaw Avenue Widening Between North DeWolf Avenue and North McCall Avenue Project		

#### 2. HARO ENVIRONMENTAL

CITY OF MODESTO PUBLIC WORKS DEPARTMENT			
Contact:	Robert Davalos, Associate Civil Engineer	Phone: 209.577.5253	Email: <a href="mailto:rdavalos@modestogov.com">rdavalos@modestogov.com</a>
Project:	Westbound D Street to Northbound 9th Street Right Turn Lane Improvements ISA and PSI		
QUINCY ENGINEERING			
Contact:	Mark Reno, Project Manager	Phone: 916.368.9181	Email: <a href="mailto:markr@quincyeng.com">markr@quincyeng.com</a>
Project:	County of San Luis Obispo Aerially Deposited Lead Study		

## 6. LEGAL ENTITY

### A. SWCA ENVIRONMENTAL CONSULTANTS

SWCA is a 100% employee-owned S-Corporation, incorporated in 1984. Over the past 36 years, SWCA has grown into a large business with **1,200 employees in 38 offices** throughout the United States, including six offices in California—[San Francisco](#), [Half Moon Bay](#), [Sacramento](#), [San Luis Obispo](#), [Pasadena](#), and [San Diego](#).

LEGAL NAME:	SWCA, Incorporated, dba SWCA Environmental Consultants
TYPE OF ORGANIZATION:	S Corporation
SIZE:	1,200+ employees
LOCATION:	38 offices throughout the United States, including six in California
YEAR ESTABLISHED:	Established in 1981, incorporated in 1984 (36 years)

### B. SUBCONSULTANTS

#### 1. AMBIENT AIR QUALITY & NOISE CONSULTING

LEGAL NAME:	AMBIENT Air Quality & Noise Consulting, LLC
TYPE OF ORGANIZATION:	Sole Proprietorship
SIZE:	2 employees
LOCATION:	612 12 <sup>th</sup> Street, Suite 201, Paso Robles, CA 93446
YEAR ESTABLISHED:	2004 (16 years)

#### 2. HARO ENVIRONMENTAL

LEGAL NAME:	Haro Environmental, Incorporated
TYPE OF ORGANIZATION:	S-Corporation
SIZE:	5 employees
LOCATION:	872 Higuera St, San Luis Obispo, CA 93401
REGISTRATIONS	Disadvantaged Business Enterprise (DBE #42812; California Unified Certification Program) Woman/Minority Business Enterprise (WMBE #17000336; Supplier Clearinghouse)
YEAR ESTABLISHED:	2013 (7 years)



## 7. COVID-19 PRECAUTIONS

Due to heightened concerns regarding Coronavirus Disease 2019 (COVID-19) transmission during the pandemic, we wanted to share with you the precautions SWCA is taking to provide continuity of service to our clients. We understand that despite the current health crisis, essential businesses have projects to complete and schedules to maintain, and SWCA is here to support you through all phases of development and compliance during operations.

SWCA has developed industry-leading coronavirus initiatives to allow our staff to continue working safely in the field to support our clients, as follows:

- Convened a COVID-19 Task Force to monitor the situation in real time and provide company-wide guidance to ensure business continuity.
- Updated our Fieldwork Safety Plan to allow our expert field teams to continue fieldwork in support of our clients.
- Hosted several Fieldwork Safety question and answer sessions and a company-wide safety briefing.
- Created a Safety Best Practices Tip Sheet for field crews.
- Prepared a Solo Driving Guidance Document to maintain social distancing while deploying field teams.
- Facilitated work in our communities, such as developing materials to identify our staff as performing essential business and obtaining and distributing Personal Protective Equipment (PPE) to protect our staff and the clients with whom they interact.

SWCA

## APPENDIX A:

### Project Team Resumes

## JACQUELINE MARKLEY, M.S., AICP, PROJECT MANAGER / ENVIRONMENTAL PLANNER

Ms. Markley is an environmental planner that specializes in CEQA/NEPA development strategies, technical assessment and reporting, permitting, compliance, and program management of complex land use, development, and land management projects. As a project manager, she has accumulated a diverse background and technical expertise providing project and team leadership for a wide range of projects in northern, central, and southern California. Ms. Markley has prepared environmental documents for varying levels of CEQA/NEPA review for a variety of local, state, and federal agencies, as well as private clients. She has extensive experience evaluating a variety of environmental resources, land use opportunities and constraints, and policy consistency. Ms. Markley's projects are kept on track and within budget through close coordination with the project team, the client, and the client's consultants. She has a broad perspective of successful processes and methods required to maintain and expand client relationships as well as create and implement innovative solutions for complex projects.

### YEARS OF EXPERIENCE

14

### EXPERTISE

CEQA/NEPA compliance

Project management

Environmental constraints and opportunities analysis

Permitting

### EDUCATION

M.S., Environmental Management;  
University of San Francisco, 2014

B.S., Environmental Studies, e: Ecology  
and Conservation, m: Anthropology;  
University of California, Santa Cruz,  
2010

### REGISTRATION/CERTIFICATION

Authorized User; California Historical  
Resources Information System, No. 271

USACE Wetland Delineation  
Certification

Certification; American Institute of  
Certified Planners (AICP), 29653

### AFFILIATIONS/MEMBERSHIPS

Member, Association of Environmental  
Professionals

Member, American Planning  
Association

Member, The Wildlife Society:  
Sacramento-Shasta Chapter

### SELECTED PROJECT EXPERIENCE (\* denotes project experience prior to SWCA)

**Juniper Ridge South Business Park IS/MND; City of Coalinga; Coalinga, Fresno County, California.** SWCA prepared an IS/MND for the development of an 11-acre industrial business park, including 102,000 square-feet of office suites, for future uses including cannabis activities. *Role: Environmental Planner. Provided senior review of IS/MND.*

**Kern River Parkway Bike Trail, Western Extension Project Environmental Studies; Kern County Public Works Department; Kern County, California.** SWCA supported Kern County with biological services, including protocol surveys for blunt-nosed leopard lizard, giant kangaroo rat, Tipton's kangaroo rat, and Buena Vista Lake shrew. SWCA prepared the Natural Environmental Study (NES) and Biological Assessment (BA) to satisfy NEPA requirements. In addition, SWCA provided technical review on all issue areas within the County's CEQA document and prepared a Water Quality Assessment memorandum for the proposed bike path extension. *Role: CEQA Project Manager/Primary Reviewer. Peer reviewed the County's IS/MND for CEQA compliance.*

**Wahtoke Creek Bridge Replacement Project Environmental Studies; County of Fresno Department of Public Works; Fresno County, California.** SWCA prepared a NES MI, Water Quality Technical Memo, and Initial Site Assessment for the replacement of Wahtoke Creek Bridge on East Lincoln Avenue, between South Frankwood Avenue and South Buttonwillow Avenue, approximately 5 miles north of the city of Reedley. *Role: Environmental Planner. Prepared the water quality assessment.*

**Jacalitos Creek Bridge Replacement Project Environmental Studies; County of Fresno Department of Public Works; Fresno County, California.** SWCA prepared a water quality assessment technical memo and Phase I ISA for a bridge replacement project at Lost Hills Avenue, over Jacalitos Creek. *Role: Project Manager/Environmental Planner. Conducted project management and prepared the water quality assessment.*

**James Bypass Bridge Replacement Project Environmental Studies; County of Fresno Department of Public Works; Fresno County, California.** SWCA prepared an NES, a BA, a Farmlands Assessment, a Water Quality Assessment, and a Jurisdictional Delineation for two bridges proposed to be replaced along West Manning Avenue over the Fresno Canal. *Role: Project Manager/Environmental Planner. Managed the project and served as primary author for all of the technical studies.*

**Pismo Beach General Plan Circulation Element Update Project; City of Pismo Beach; Pismo Beach, California.** SWCA prepared the IS/MND CEQA document for the City of Pismo Beach's proposed comprehensive update of the City's General Plan Circulation Element. *Role: Environmental Planner. Served as the primary author of the CEQA document and assisted the City with public workshops and hearings.*

**South Shafter Sewer Biological Resources Studies; Kern County Public Works Department; South Shafter, Kern County, California.** SWCA prepared a Biological Assessment and Supplemental Biological Resources Memo for the installation of approximately 34,500 linear feet of sewer trunk line and associated manholes for access within existing road rights-of-way and water line easements along Shafter Avenue, Poplar Avenue, Beech Avenue, Myrick Lane, Riverside Street, Orange Street, and Burbank Street. *Role: Environmental Planner. Served as primary author of Biological Assessment and Supplemental Biological Resources Memo.*

**City of Pismo Beach General Plan Circulation Element Update IS/MND; City of Pismo Beach Public Works Department; San Luis Obispo County, California.** SWCA prepared an IS/MND to satisfy CEQA requirements for a proposed Circulation Element Update for the City of Pismo Beach, California. SWCA teamed with Omni-Means, the transportation engineering firm that prepared the Circulation Element Update. *Role: Project Manager/Primary Author. Prepared the IS/MND and attended all public hearings to assist the City.*

**\* Fresno County – Millerton Road Improvement Project IS/MND; County of Fresno; Fresno County, California.** This project required the preparation of an IS/MND to examine the potential environmental effects associated with the construction and operation of the proposed Millerton Road Improvement Project. The proposed project would result in the reconstruction of an approximately 4.7-mile stretch of Millerton Road from a two-lane rural roadway to a four-lane divided arterial roadway between North Fork Road to just east of Table Mountain Road. *Role: Environmental Planner. Contributing author of the MND.*

**El Porvenir Water Systems Consolidation Project Environmental Studies; County of Fresno; Cantua Creek; Fresno County, California.** SWCA prepared a BA, Biological Resources Technical Memo, Floodplain Memo, and Farmland Conversion Impact Form for the Cantua Creek Water System Improvements Project in support of the Drinking Water State Revolving Fund Environmental Package. *Role: Project Manager/Environmental Planner. Conducted project management and served as primary author of the technical studies.*

**Fall River Valley Community Services District Water Tank and Booster Pump Station Project IS/MND; Fall River Valley Community Services District; Shasta County, California.** SWCA prepared an IS/MND to satisfy CEQA requirements for the project located in the unincorporated town of McArthur, approximately 0.25 mile east of Lewis Road and 0.65 mile north of State Route 299. The project included the construction of a new water tank and booster pump station on the existing McArthur Well #1 site on an approximately 0.25-acre parcel. *Role: CEQA Project Manager/Primary Author. Prepared the IS/MND.*

**Federal Emergency Management Agency (FEMA) Hazard Mitigation and Technical Assistance Program (HMTAP) Environmental Support; Federal Emergency Management Agency; Multiple Counties, California.** SWCA is providing environmental and historic preservation review services for various hazard mitigation projects seeking federal funding located throughout California. *Role: Program Manager / Primary Author. Conducted project management and served as primary author of many EHP NEPA and supporting technical documents.*

**County of SLO Bridge Preventative Maintenance Project Environmental Studies; County of San Luis Obispo; San Luis Obispo County, California.** SWCA is providing environmental services, including preparation of all CEQA/NEPA documentation, technical studies, and permitting, for various preventative maintenance measures at eight bridge locations throughout San Luis Obispo County. *Role: Environmental Planner. Prepared the IS/MND for CEQA compliance.*

**Shell Beach Road Streetscape and Pedestrian Safety Project – Phase I Environmental Studies; San Luis Obispo County, California; City of Pismo Beach.** SWCA is providing environmental services, including preparation of all CEQA/NEPA documentation, technical studies and permitting, for the reconstruction of an 18-block section of Shell Beach Road between Cliff Avenue and Terrace Avenue in downtown Shell Beach. Due to sensitive archaeological resources in the area, SWCA also performed an Extended Phase I Archaeological Survey of the project area at the request of Caltrans. *Role: Environmental Planner. Prepared the IS/MND for CEQA compliance.*

**4941 David Road Trust Land Project EA; Tejon Indian Tribe; Kern County, California.** SWCA is preparing an Environmental Assessment for the rehabilitation of existing buildings on tribal land just outside the city limits of Bakersfield. *Role: Project Manager/Environmental Planner. Primary author of the EA.*



## EMILY CREEL, J.D., PROJECT DIRECTOR / PLANNING TEAM LEAD

Ms. Creel is a project manager and the Planning Team Leader in SWCA's San Luis Obispo office. She obtained her JD in 2005 and has been practicing in the field of environmental law and planning in California for over 10 years. She has a specialized background in environmental law and policy, CEQA/NEPA compliance, formulation of mitigation measures, and land use controls.

Ms. Creel is well-versed in state and federal environmental laws and regulations, the administrative process, local county and municipal codes, and California Coastal Commission regulations. She is proficient in analyzing statutory interpretations and researching the formulation and referencing authority of reliable legal precedence through common law court decisions. Ten years of litigation and consulting experience have given Ms. Creel a working knowledge of available legal resources and ongoing changes in environmental law and policy. Her varied experience has given her the ability to handle complex environmental and legal issues.

### YEARS OF EXPERIENCE

15

### EXPERTISE

Environmental, land use, and property law

CEQA / NEPA compliance

Project management

Environmental law updates, CEQA litigation

### EDUCATION

J.D., Indiana University School of Law, 2005

Environmental Law Research Group, Indiana University School of Law, 2002-2004

B.A., Political Science, Arizona State University; Tempe, Arizona, 2002

### TRAINING

State Bar of California Minimum Continuing Legal Education, 2006–2017

Association of Environmental Professionals (AEP) CEQA Workshops and Legislative Updates, 2009–2017

American Planning Association Annual Conference, 2011, 2016, 2017

### AFFILIATIONS/MEMBERSHIPS

State Bar of California

San Luis Obispo County Bar Association

AEP, Channel Counties Chapter, Legislative Committee Representative

### SELECTED PROJECT EXPERIENCE

**Juniper Ridge South Business Park IS/MND; City of Coalinga; Coalinga, Fresno County, California.** SWCA prepared an IS/MND for the development of an 11-acre industrial business park, including 102,000 square-feet of office suites, for future uses including cannabis activities. *Role: Project Manager. Managed contract and project administration, conducted AB 52 noticing, and provided QA/QC for IS/MND.*

**City of Coalinga Housing Element; City of Coalinga; Coalinga, Fresno County, California.** SWCA prepared the Housing Element Update for the 5-year planning period between 2009 and 2014, identified as a subsequent project in the City of Coalinga 2025 General Plan Update Master EIR (SWCA 2008). SWCA conducted the environmental review of the Housing Element Update, prepared an Initial Study, and prepared written findings of conformity with the General Plan Update Master EIR pursuant to CEQA Guidelines Section 15177. *Role: Project Manager / Environmental Planner. Researched and prepared needs assessment and site inventory analysis, coordinated public participation process, evaluated effectiveness of current Housing Element, prepared draft and final certified Housing Element, and coordinated California Department of Housing and Community Development Department review and certification process.*

**North San Luis Obispo Coastal Trail Constraints Analysis; Alta Planning + Design; San Luis Obispo County, California.** SWCA prepared an environmental constraints analysis addressing land use, agricultural resources, biological resources, cultural resources, and geologic hazards of a 35-mile-long section of the California Coastal Trail in San Luis Obispo County. *Role: Environmental Specialist. Prepared various sections of the preliminary constraints analysis.*

**North Fort Bragg Coastal Trail EIR/EA; City of Fort Bragg; Mendocino County, California.** SWCA prepared an EIR and Environmental Assessment for a proposed 4.5-mile coastal bikeway and site restoration, located on the former property of the Georgia-Pacific Lumber Mill, along the western edge of the city of Fort Bragg in Mendocino County. Work also included preparation of a biological assessment, natural environment study, historic properties survey report, and historic resources evaluation report. *Role: Environmental Specialist. Analyzed applicable regulatory documents and standards, and performed analysis of project consistency with relevant local, regional and state goals, policies, and implementing measures.*

**Morro Bay to Cayucos Connector EIR; County of San Luis Obispo; San Luis Obispo County, California.** SWCA prepared an EIR evaluating a proposed 1.25-mile-long segment of a bike trail extending along Highway 1, in the vicinity of the city of Morro Bay and the unincorporated community of Cayucos. *Role: Environmental Specialist. Prepared various EIR sections for development of a bicycle and pedestrian path through biologically and visually sensitive stretch of coastline.*

**Galt SR99/Twin Cities Road Interim Improvements Environmental Studies; Omni-Means; Sacramento County, California.** SWCA analyzed the environmental effects of modification to the Twin Cities Interchange on State Route 99 in the city of Galt, including the addition of roundabouts, freeway on-ramps, and pedestrian upgrades. *Role: Environmental Planner. Drafted CEQA environmental clearance document (IS/MND).*

**Highway 41/1/Main Street Intersection Improvement Project Environmental Studies; Omni-Means; Morro Bay, San Luis Obispo County, California.** SWCA is providing environmental services, including preparation of all CEQA/NEPA documentation, technical studies, and permitting, for the construction of a modern roundabout at the intersections of State Routes 1 & 41 (Atascadero Road) and Main Street in the city of Morro Bay. *Role: Project Manager/Environmental Planner. Managing contract and project administration and preparing technical reports.*

**Brisco Road/Halcyon Road/Highway 101 Improvements Environmental Studies; Wood Rodgers; San Luis Obispo County, California.** SWCA prepared various technical reports analyzing alternatives for the interchange modification project, located in the city of Arroyo Grande, in support of the joint CEQA/NEPA process, including Community Impacts Assessment, Visual Impact Assessment, Water Quality Assessment Report, and Initial Study/Mitigated Negative Declaration. *Role: Environmental Planner. Prepared technical reports and consulted with interested agencies, including the City of Arroyo Grande, County of San Luis Obispo, and Caltrans.*

**California/Taft Roundabout Project Environmental Studies; Omni-Means; San Luis Obispo County, California.** SWCA is providing environmental services, including preparation of CEQA/NEPA documentation and technical studies, for the proposed roundabout at the intersection of California Boulevard and Taft Street in San Luis Obispo. *Role: Project Manager/Environmental Planner. Managing contract and project administration and preparing technical reports.*

**Goleta Beach Park Bridge Replacement Environmental Studies; Quincy Engineering; Santa Barbara County, California.** SWCA is providing environmental services, including preparation of all CEQA/NEPA documentation, technical studies, and permitting, for the replacement of the existing bridge over the Goleta Slough between Sandspit Road and Goleta Beach Park. *Role: Environmental Specialist. Prepared various technical studies and CEQA documents through adherence to Caltrans Standard Environmental Reference requirements, analyzed potential for water quality impacts, assisted in preparation of numerous project graphics, and assisted in coordinating Caltrans project oversight.*

**El Camino Real Bridge Replacement Environmental Studies; Quincy Engineering; Atascadero, San Luis Obispo County, California.** SWCA is providing environmental services, including preparation of all CEQA/NEPA documentation, technical studies, and permitting, for the replacement of the El Camino Real bridge over Santa Margarita Creek in Atascadero. *Role: Environmental Planner. Prepared the Visual Impact Assessment Checklist and provided QA/QC for the Farmland Conversion Impact Rating Form and IS/MND.*

**Branch Mill Bridge Replacement Project Environmental Studies; Quincy Engineering; San Luis Obispo County, California.** SWCA prepared all CEQA/NEPA documentation, technical studies, and permitting, for the replacement of the bridge over Tar Springs Creek in the city of Arroyo Grande. *Role: Environmental Planner. Prepared the Farmland Conversion Impact Rating Form and Visual Impact Assessment Checklist.*

**Avila Beach Drive Bridge No. 1 Seismic Retrofit Project Environmental Studies; County of San Luis Obispo; Avila Beach, San Luis Obispo County, California.** SWCA is providing environmental services, including preparation of all CEQA/NEPA documentation, technical studies, and permitting, for the seismic retrofit of the Avila Beach Drive bridge over San Luis Obispo Creek where the creek empties into San Luis Bay. *Role: Environmental Planner. Prepared the Visual Impact Assessment Checklist and Noise Memo.*

**River Grove Bridge Rehabilitation Project Environmental Studies; Quincy Engineering; Paso Robles, San Luis Obispo County, California.** SWCA provided environmental services, including preparation of all CEQA/NEPA documentation, technical studies, and permitting, for the project, which includes the rehabilitation of the existing River Grove Drive Bridge over the Estrella River in the community of Garden Farms. *Role: Environmental Planner. Prepared the IS/MND.*

## GARY RUGGERONE, M.A., NEPA SPECIALIST

Mr. Ruggerone has more than 30 years of professional experience in environmental planning involving the preparation, review, and approval of CEQA and NEPA environmental documents, environmental technical reports, and resource agency permits. As an Environmental Branch Chief for Caltrans District 5, Mr. Ruggerone was the environmental manager and contributor to hundreds of environmental determinations, including EIS/EIRs, EAs/NDs, and Categorical Exclusions/Exemptions for transportation projects. In addition, Mr. Ruggerone has prepared or supervised the preparation of hundreds of technical studies including NESs, BAs, HPSRs, and Section 4(f) and 6(f) Evaluations. From 1999 through 2010, Mr. Ruggerone was the supervisor of the Caltrans District 5 environmental branch, with responsibility for approval of all environmental documents and technical studies and obtaining federal consultation for projects under the Caltrans Local Assistance program.

### YEARS OF EXPERIENCE

41

### EXPERTISE

Environmental Management  
CEQA/NEPA compliance  
ESA/CESA  
Section 7 Biological Assessments  
Natural Environment Studies  
Sections 4(f)/6(f)  
Local Assistance Procedures  
Permitting  
Advanced Mitigation

### EDUCATION

B.S., Biological Sciences; Cal Poly  
Pomona, California; 1973  
M.A., Biology; e: Population / Aquatic;  
University of California, Santa Barbara;  
1975

### REGISTRATIONS / CERTIFICATIONS

Certified NEPA Quality Control  
Reviewer; 2007

### AWARDS / HONORS

FHWA Environmental Excellence Award  
for Leadership  
Caltrans 2010 Emerson Rhyner Award  
Caltrans Superior Accomplishment  
Awards (1994, 2001, 2003, 2010)

Mr. Ruggerone was an approved NEPA reviewer under the FHWA NEPA Delegation program. In 2001, Mr. Ruggerone represented District 5 on a Caltrans/FHWA team charged with standardizing biological technical reports. Mr. Ruggerone participated in the development of guidance and templates that are currently required for all biological technical reports prepared for Caltrans/FHWA. In 2005, Mr. Ruggerone was selected as a Local Assistance environmental representative to a Statewide team that developed implementation strategies for NEPA Delegation of Local Assistance Projects. Strategies, guidance, and document/report templates developed by that team resulted in California being the only State to be assigned FHWA NEPA responsibilities.

### SELECTED PROJECT EXPERIENCE (\* denotes project experience prior to SWCA)

**Seventh Standard Road Widening Project Environmental Studies; Kern County Public Works Department; Kern County, California.** SWCA was contracted to assist in the completion of a draft PEAR and to complete the associated technical studies. Because the proposed road widening currently bisects the Buttonwillow Ecological Reserve for approximately 1 mile, it would be considered a permanent conversion of this Section 4(f) use. As a first step, SWCA has assisted the County with coordination with CDFW to discuss this key issue area first. Currently, the project is on hold until the County and their government representatives determine a path moving forward. *Role: NEPA Specialist. Facilitated Section 4(f) issue and conducted QA/QC review.*

**Rincon Multi-Use Trail Project Environmental Services; Bengal Engineering, City of Carpinteria, County of Santa Barbara, and Santa Barbara County Association of Governments (SBCAG); Santa Barbara County, California.** SWCA is providing environmental services, including preparation of all CEQA/NEPA documentation, technical studies and permitting, for the construction of a new 2,800-foot-long multi-use trail that would extend from Carpinteria Avenue to Rincon Beach County Park and the Santa Barbara/Ventura County Line in the city of Carpinteria. *Role: Environmental Specialist. Conducted project management and QA/QC of deliverables, completed PES form, and prepared Section 4(f) and 6(f) evaluation.*

**Shell Beach Road Pedestrian Safety & Streetscape Project – Phase 1 Environmental Studies; City of Pismo Beach; Pismo Beach, San Luis Obispo County, California.** SWCA is providing environmental services, including preparation of all CEQA/NEPA documentation,

technical studies and permitting, for the reconstruction of an 18-block section of Shell Beach Road between Cliff Avenue and Terrace Avenue in downtown Shell Beach. Due to sensitive archaeological resources in the area, SWCA also performed an XPI Archaeological Survey of the

project area at the request of Caltrans. *Role: NEPA/Section 4(f)/6(f) Specialist. Prepared Section 4(f) and 6(f) evaluation for Active Transportation Program project.*

**Highway 41/1/Main Street Intersection Improvement Project Environmental Studies; Omni-Means, City of Morro Bay; San Luis Obispo County, California.** SWCA is providing environmental services, including preparation of all CEQA/NEPA documentation, technical studies, and permitting, for the construction of a modern roundabout at the intersections of State Routes 1 and 41 (Atascadero Road) and Main Street in Morro Bay. *Role: NEPA Specialist. Conducted NEPA compliance and QA/QC review.*

**Task Order 3 - State Route 46 Corridor Improvement Offsite Compensatory Mitigation; California Department of Transportation; San Luis Obispo County, California.** SWCA prepared a Draft Long-term Management Plan for Off-Site Preservation and Enhancement, for use by the Upper Salinas-Las Tablas Resource Conservation District in the management of the Cholame Creek Preserve in perpetuity, for the State Route 46 Corridor Improvement Project in northeastern San Luis Obispo County. *Role: Environmental Specialist. Prepared the Draft Long-term Management Plan for Off-Site Preservation and Enhancement.*

**Cachagua Road Emergency Repair Biological and Archaeological Surveys; County of Monterey; Monterey County, California.** SWCA is providing environmental services, including preparation of a Biological Resources Survey Report and Archaeological Survey Report, for the emergency road repair project, which includes emergency repairs to approximately 150 feet of collapsed roadway of Cachagua Road in Carmel Valley. *Role: Environmental Specialist.*

**Prado Road Bridge Widening; City of San Luis Obispo; San Luis Obispo County, California.** SWCA is providing environmental services, including preparation of all CEQA/NEPA documentation, technical studies, and permitting, for the widening of the Prado Road Bridge between U.S. 101 and South Higuera Street and associated intersection improvements to accommodate current and future traffic demands. *Role: Environmental Specialist.*

**Lopez Drive Bridge Seismic Retrofit Project Engineering Services; County of San Luis Obispo; Arroyo Grande, San Luis Obispo County, California.** SWCA is providing environmental services, including preparation of all CEQA/NEPA documentation, technical studies, and permitting, for the seismic retrofit of Lopez Drive Bridge over Lopez Lake in Arroyo Grande. Due to sensitive archaeological resources in the area, SWCA also performed an Extended Phase I Archaeological Survey of the project area. *Role: Environmental Specialist. Conducted NEPA compliance, Section 4(f) and 6(f) analysis, and QA/QC review.*

**City of Arroyo Grande Bridge Street Project; City of Arroyo Grande; Arroyo Grande, San Luis Obispo County, California.** SWCA provided environmental services, including preparation of all CEQA/NEPA documentation, technical studies, and permitting, for the project, which will replace the existing bridge crossing Arroyo Grande Creek near the intersection of West Branch Street and Bridge Street in the city of Arroyo Grande. *Role: NEPA Specialist. Conducted NEPA compliance, Section 4(f) analysis, and QA/QC review.*

**County of SLO Bridge Preventative Maintenance Project Environmental Services; County of San Luis Obispo; San Luis Obispo County, California.** SWCA is providing environmental services, including preparation of all CEQA/NEPA documentation, technical studies, and permitting, for various preventative maintenance measures at eight bridge locations throughout San Luis Obispo County. *Role: Environmental Specialist.*

**River Grove Bridge Rehabilitation Project Environmental Services; County of San Luis Obispo; Paso Robles, San Luis Obispo County, California.** SWCA provided environmental services, including preparation of all CEQA/NEPA documentation, technical studies, and permitting, for the project, which includes the rehabilitation of the existing River Grove Drive Bridge over the Estrella River in the community of Garden Farms. *Role: Environmental Specialist. Conducted NEPA compliance, Section 4(f) analysis, and QA/QC review.*

**Avila Beach Drive Bridge No. 1 Seismic Retrofit Project; ;Avila Beach, San Luis Obispo County, California.** SWCA is providing environmental services, including preparation of all CEQA/NEPA documentation, technical studies, and permitting, for the seismic retrofit of the Avila Beach Drive bridge over San Luis Obispo Creek where the creek empties into San Luis Bay. *Role: Environmental Specialist. Conducted Section 4(f) analysis.*

**California/Taft Roundabout Project; City of San Luis Obispo; San Luis Obispo County, California .** SWCA is providing environmental services, including preparation of CEQA/NEPA documentation and technical studies, for the proposed roundabout at the intersection of California Boulevard and Taft Street in San Luis Obispo. *Role: Environmental Specialist. Prepared PES Form and Purpose and Need Statement.*



## CASSIDY WILLIAMS, B.S., ENVIRONMENTAL PLANNER

Ms. Williams is an Environmental Planner specializing in CEQA documentation and compliance for land use development projects. As an environmental planner, she has accumulated a diverse project background working with several municipalities on a variety of development projects in California. Her CEQA experience includes the preparation of IS/MNDs and EIRs. Previously, she worked for the County of San Luis Obispo processing land use permits and preparing environmental documentation in accordance with CEQA. She also worked for Pacific Gas & Electric, where she assisted with biological and cultural field surveys and recreation trail management.

### YEARS OF EXPERIENCE

4

### EXPERTISE

CEQA documentation  
Environmental impact analysis  
Land use planning

### EDUCATION

B.S., Environmental Management and Protection; California Polytechnic State University, San Luis Obispo; 2017

### TRAINING

Advanced CEQA Workshop Series, Association of Environmental Professionals; 2018, 2019  
Legislative Session Overview, Association of Environmental Professionals; 2018  
Sustainable Groundwater Management Act Workshop, County of San Luis Obispo; 2017  
CEQA Essentials Workshop Series, Association of Environmental Professionals; 2016

### MEMBERSHIPS

Student Liaison and Member, Association of Environmental Professionals – Channel Counties Chapter

### SELECTED PROJECT EXPERIENCE

**Kern River Bike Trail Western Expansion; Kern County Public Works Department; Kern County, California.** SWCA is preparing a Water Quality Assessment, Natural Environment Study, Biological Assessment, Botanical Survey, Buena Vista Shrew Survey, Blunt-nosed Leopard Lizard Survey, Water Bank Training, and Initial Study/Mitigated Negative Declaration for the construction of approximately 7 miles of a bikeway from the existing Kern River Parkway Bike Trail to the Buena Vista Aquatic Recreation Area. *Role: Environmental Planner. Prepared Water Quality Assessment Memo.*

**El Camino Real Bridge Replacement Environmental Services; County of San Luis Obispo; Atascadero, San Luis Obispo County, California.** SWCA provided environmental services, including preparation of all CEQA/NEPA documentation, technical studies, and permitting, for the replacement of the El Camino Real Bridge over Santa Margarita Creek in Atascadero. *Role: Planning Specialist. Prepared IS/MND.*

**Santa Lucia Road at Graves Creek Bridge Replacement Project Environmental Services; City of Atascadero; Atascadero, San Luis Obispo County, California.** SWCA is providing environmental services, including preparation of all CEQA/NEPA documentation, technical studies, and permitting, for the replacement of the Santa Lucia Road bridge over Graves Creek in Atascadero. *Role: Planning Specialist. Assisted with preparation of the IS/MND, Response to Comments, and Mitigation Monitoring and Reporting Plan.*

**Dover Canyon Road at Jack Creek Bridge Replacement Project Environmental Services; County of San Luis Obispo; Adelaida, San Luis Obispo County, California.** SWCA is providing environmental services, including preparation of all CEQA/NEPA documentation, technical studies, and permitting, for the replacement of the Dover Canyon Road bridge over Jack Creek in Adelaida. *Role: Planning Specialist. Prepared Visual Impact Assessment Memo and Noise Impact Memo.*

**Lopez Drive Bridge Seismic Retrofit Project Engineering Services; County of San Luis Obispo; Arroyo Grande, San Luis Obispo County, California.** SWCA is providing environmental services, including preparation of all CEQA/NEPA documentation, technical studies, and permitting, for the seismic retrofit of Lopez Drive Bridge over Lopez Lake in Arroyo Grande. Due to sensitive archaeological resources in the area, SWCA also performed

an Extended Phase I Archaeological Survey of the project area. *Role: Planning Specialist. Prepared IS/MND.*

**Cannabis Cultivation Application Processing and IS/MND; County of San Luis Obispo; Regionwide, San Luis Obispo County, California.** SWCA is contracted with the County of San Luis Obispo to review and process land use permit application in compliance with the County's Cannabis Regulatory Program, General Plan, CEQA, and other local and state regulations. *Role: Project Manager/ Environmental Planner. Coordination between County staff and applicants to review and process over 30 land use permit applications to obtain permit coverage.*

## JON CLAXTON, B.S., NATURAL RESOURCES TEAM LEAD

Mr. Claxton is as a biologist and environmental consultant in California with experience performing a variety of biological and environmental tasks including preparing Endangered Species Act Section 7 Biological Assessments, Caltrans Natural Environment Studies, CEQA documents, mitigation and monitoring plans, and sensitive species survey reports. In addition to preparing technical documents, he is experienced in conducting compliance monitoring for numerous small- and large-scale construction projects.

In addition to preparing technical documents, Mr. Claxton is experienced in conducting compliance monitoring for numerous construction projects throughout California. He has also prepared several state and federal permit applications, including USACE Section 404 Nationwide Permit Applications, RWQCB Section 401 Water Quality Certifications, and CDFW Section 1600 Streambed Alteration Agreements.

### YEARS OF EXPERIENCE

19

### EXPERTISE

Endangered Species Act consultation  
CEQA/NEPA compliance  
Regulatory permitting  
Wetland delineation

### EDUCATION

B.S., Biological Sciences; California Polytechnic State University, San Luis Obispo; 2001

### REGISTRATION/CERTIFICATION

Plant Voucher Collecting Permit, CDFW; 2081(a)-09-04-V

Scientific Collecting Permit, CDFW; SC-7285

Morro shoulderband snail 10(a)(1)(A) Recovery Permit; USFWS; TE-824123-4

Authorized to survey for, relocate, and monitor California Red-legged Frog under various USFWS BOs

### TRAINING

Federal Environmental Requirements for Local Agency Transportation Projects 'OFF' the State Highway System; Caltrans; 2015

Basic Wetland Delineation Training; Wetland Training Institute; April 2007

San Joaquin Kit Fox Habitat Evaluation Workshop; County of San Luis Obispo; July 2003, 2005

CEQA Basics Work Shop Series; 2002–2004, 2006

### SELECTED PROJECT EXPERIENCE

**Prado Road Bridge Widening Project Environmental Studies; San Luis Obispo County, California; Wallace Group, City of San Luis Obispo.** SWCA is providing environmental services, including preparation of all CEQA/NEPA documentation, technical studies, and permitting, for widening of the existing two-lane bridge over San Luis Obispo Creek. *Role: Project Manager. Providing project management for CEQA and NEPA technical documents, and preparing the Conceptual Habitat Mitigation and Monitoring Plan and permit application packages.*

**Brisco Road/Halcyon Road/Highway 101 Interchange Environmental Studies; Wood Rodgers, City of Arroyo Grande; San Luis Obispo County, California.** SWCA prepared various technical reports analyzing alternatives for the interchange modification project, located in the city of Arroyo Grande, in support of the joint CEQA/NEPA process, including Community Impacts Assessment, VIA, WQA Report, and IS/ D. *Role: Project Manager. Managed contract and project administration, and provided QA/QC for deliverables.*

**60th Street Road Improvement Project Biological Resources Assessment; Kern County Public Works Department; Kern County, California.** SWCA conducted a biological resources assessment analyzing the impacts of road improvements along 60th Street near the community of Rosamond. *Role: Project Manager / Senior Biologist. Managed contract and project administration, conducted biological surveys, and prepared report.*

**Redrock Randsburg Road Shoulder Construction Project Biological Assistance; Kern County Public Works Department; Kern County, California.** SWCA prepared a Natural Environment Study (Minimal Impact) analyzing the potential impacts to biological resources for the construction of road shoulders on Redrock Randsburg Road, located between SR-14 and Garlock Road, south of the town of Ridgecrest. *Role: Project Manager/Senior Biologist. Managed contract and project administration, conducted biological surveys, and prepared report.*

**Midway Road Shoulder Construction Project Environmental Studies; Kern County Public Works Department; Kern County, California.** SWCA prepared a Natural Environment Study and Biological Assessment analyzing the environmental impacts of construction of an asphalted shoulder along a 4-mile section of Midway Road, located between Highway 33 and Highway 119 just west of the city of Bakersfield. *Role: Project Manager/Senior Biologist. Managed contract and project administration; conducted literature review, field survey, and protocol-level survey for blunt-nosed leopard lizard; and prepared technical reports.*

## GEOFF HOETKER, M.S., SENIOR BIOLOGIST/WETLANDS SPECIALIST

Mr. Hoetker is a wildlife biologist, a field botanist, and an experienced Wetland Training Institute-trained wetland delineator. He has extensive experience preparing technical reports and regulatory permitting applications, including preliminary environmental constraints analyses, biological resources survey reports, Biological Assessments for Federal Endangered Species Act Section 7 formal and informal consultations, Caltrans Natural Environment Studies, aquatic resources delineations, assisting with CEQA/NEPA documentation, Mitigation and Monitoring Plans, and 404/401/1600/2081 permitting.

Mr. Hoetker has conducted agency coordination and regulatory permitting for numerous projects, and has extensive experience with special-status species surveys, floristic botanical surveys, fish and amphibian handling and relocation, and small mammal trapping. He is permitted to collect voucher specimens of state-listed endangered, threatened, and rare plants, retains a Scientific Collecting Permit including small mammal trapping and marking, and has federal/state approvals to conduct trapping for several kangaroo rat species. He has also been approved as a CDFW-approved Level II Researcher to lead protocol blunt-nosed leopard lizard surveys, a USFWS-approved biologist for California red-legged frog, a USFWS/CDFW-approved biologist for San Joaquin kit fox, and an approved biologist for steelhead on projects requiring federal Biological Opinions.

### YEARS OF EXPERIENCE

21

### EXPERTISE

Caltrans technical documentation  
CEQA/NEPA compliance  
Biological resource surveys and assessments  
Aquatic resources delineations  
Regulatory Permitting

### EDUCATION

M.S., Biological Sciences, California Polytechnic State University, San Luis Obispo, 2007

B.S., Biology, California State University, Bakersfield, 1997

### PERMITS / AUTHORIZATIONS

Scientific Collecting Permit, CDFW; SC-005046

Plant Voucher Collecting Permit, CDFW; 2081(a)-15-031-V

CDFW MOU to conduct trapping for giant, Tipton, and Fresno kangaroo rats

### TRAINING

CEQA Workshop; AEP; 2004, 2005

Wetland Delineation Training; Wetland Training Institute; 2004

### SELECTED PROJECT EXPERIENCE

**Caltrans District 5 Staff Augmentation; California Department of Transportation District 5; Santa Cruz, Monterey, San Benito, San Luis Obispo, and Santa Barbara Counties, California.** From February 2011 to June 2019, Mr. Hoetker served as Associate Environmental Planner/Biologist within the District 5 environmental planning office as a consultant for transportation projects. From August 2017 to June 2019, Mr. Hoetker assumed the role of Caltrans Permit Coordinator under this contract. *Role: Associate Biologist / Environmental Planner/Permit Coordinator. Conducted botanical surveys and wildlife surveys for threatened and endangered species and species of concern; conducted GPS/GIS mapping for habitats and jurisdictional waters; prepared Natural Environment Studies, FESA Section 7 BAs, and Jurisdictional Waters Assessments; facilitated FESA Section 7 consultations; conducted regulatory agency coordination, Section 404/401/1600/2081 permit application submittals, and obtained regulatory permits; prepared and Mitigation and Monitoring Plans; conducted post-construction monitoring and reporting.*

**Gilardi Road Bridge Replacement Project Environmental Studies; California Polytechnic State University, San Luis Obispo; San Luis Obispo County, California.** SWCA analyzed the environmental impacts of the construction of a new two-lane bridge to replace existing 23-foot-wide, 79-foot-long, four-span timber bridge crossing over Walters/Gilardi Creek on Cal Poly land. *Role: Project Manager / Senior Biologist. Conducted contract administration and project management, and prepared Caltrans NES, BA, Wetland Delineation, IS/MND, and permit application packages.*

**Bob Jones Pathway NEPA and CEQA Studies; County of San Luis Obispo Public Works Department; San Luis Obispo County, California.** SWCA prepared the technical studies necessary to satisfy NEPA and CEQA requirements for construction of the Phase II of the Bob Jones Pathway, a Class I and Class III pedestrian/bicycle trail connecting the city of San Luis Obispo and the community of Avila Beach. Studies prepared included a Caltrans NES, BA, California Red-Legged Frog Survey Report, Wetland Assessment, Visual Impacts Study, Farmland Report, and Section 106 studies (historical and archaeological reports). *Role: Project Manager / Senior Biologist. Conducted contract and project administration, and prepared Caltrans NES, BA, and Wetland Delineation.*

## LEROY LAURIE, B.S., CULTURAL RESOURCES TEAM LEAD / SENIOR ARCHAEOLOGIST

Mr. Laurie is an archaeologist and Cultural Resources Team Lead with cultural resource project experience throughout California and Nevada. He has conducted work in a variety of cultural and geographic regions including, but not limited to, the Sierra Nevada, Great Basin, San Joaquin Valley, Central and Coast Ranges, Mojave and Sonoran Deserts, San Francisco Bay area, and Yosemite Valley. In addition to the organization and execution of field projects, he has been the primary or contributing author to several planning level documents for large- and small-scale projects.

### YEARS OF EXPERIENCE

18

### EXPERTISE

Archaeology

Report preparation

Cultural resources analysis

Mapping

Graphic Design

Molluscan Identification and Analysis

### EDUCATION

B.S., Social Sciences, e: Env.  
Geography, m: Anthropology/Geography;  
California Polytechnic State University,  
San Luis Obispo; 2001

### PERMITS

USDA Forest Service Archaeological  
Investigations Permit (LAR9058), Field  
Director; SCE Service Territory within  
federal Lands

USDA Forest Service Archaeological  
Investigations Permit (BDFSWCA01),  
Field Director; San Bernardino National  
Forest - San Jacinto and Arrowhead  
Ranger Districts

U.S. Bureau of Land Management  
Cultural Resource Use Permit (CA-17-  
23), Field Director; CA

### MEMBERSHIPS

Member, Society for California  
Archaeology

### SELECTED PROJECT EXPERIENCE

**Meadows Field Airport Categorical Exemption Environmental Support; Coffman Associates, Inc.; Bakersfield, Kern County, California.** SWCA is conducting biological and cultural resource surveys at BFL to support categorical exemption for the airport's Runway Reconstruction and Drainage Improvements Project. *Role: Archaeologist. Conducted records search, literature review, and field surveys, and prepared archaeological survey report.*

**Rowlee Road (South of Lerdo) Biological and Archaeological Surveys; Kern County Public Works Department; Kern County, California.** SWCA conducted biological and archaeological surveys and reporting on a road improvement project in Bakersfield. *Role: Archaeologist. Conducted records search, literature review, and field surveys and prepared cultural resources survey report.*

**Lost Hills Airport Biological and Cultural Resources Review; Coffman Associates, Inc.; Lost Hills, Kern County, California.** SWCA conducted biological and cultural surveys and reporting for an FAA land release in the community of Lost Hills. *Role: Archaeologist. Conducted records search, literature review, and field surveys and prepared cultural resources survey report.*

**Oak Tree Village Specific Plan EIR and Environmental Studies; PT1 Ventures, LLC; Tehachapi, Kern County, California.** SWCA is preparing biological studies and an EIR for the Oak Tree Village Specific Plan, assessing the environmental impacts of the project, which consists primarily of a senior housing development on approximately 210 acres located north of SR-58 and east of the Capitol Hills area in Tehachapi. *Role: Archaeologist. Conducted records search, literature review, and field surveys and assisted with preparation of the cultural resources section of the EIR.*

**Solari Sand and Gravel Project EIR; Kern County; Kern County, California.** SWCA is conducting a peer review of technical studies and preparing an EIR for a proposed 543-acre aggregate mining project that includes sand and gravel extraction, asphalt concrete and Portland cement concrete production plants, and asphalt and concrete recycling operations, located in the central area of southern Kern County, where the San Joaquin Valley converges with the foothills of the Tehachapi Mountains. *Role: Archaeologist. Conducted records search, literature review, and field surveys and assisted with preparation of the cultural resources section of the EIR.*

**Tehachapi Municipal Airport South Taxiway Rehabilitation Biological and Archaeological Surveys; Coffman Associates, Inc.; Mojave, Kern County, California.**

SWCA is providing biological, cultural, and wetland delineation surveys and reports to support preparation of an EA for a taxiway relocation/rehabilitation. *Role: Archaeologist. Conducted records search, literature review, and field surveys and prepared cultural resources survey report.*



## HEATHER GIBSON, PH.D., RPA, CULTURAL RESOURCES PRINCIPAL INVESTIGATOR

Heather Gibson is a cultural resources principal investigator in SWCA's Pasadena office. She is an archaeologist with 16 years of research experience, including archival research, surveys, and excavations at sites in the United States and Caribbean. Dr. Gibson has served as project archaeologist and principal investigator on cultural resources and environmental projects in compliance with CEQA, NEPA and Section 106 of the NHPA for public and private sector clients including a range of local, state, and federal agencies. She has worked extensively with clients and agencies throughout California. Dr. Gibson meets the Secretary of the Interior's professional qualification standards in both history and archaeology.

### YEARS OF EXPERIENCE

19

### EXPERTISE

Cultural resources management

California history and archaeology

18th and 19th century artifact analysis

Archival research, surveys, and excavations

### EDUCATION

Ph.D., with distinction, Anthropology; Syracuse University, Syracuse, New York; 2007

M.A., Anthropology; Syracuse University, Syracuse, New York; 2004

B.A., magna cum laude, Anthropology and French; University of Notre Dame, South Bend, Indiana; 1998

### TRAINING

National Preservation Institute, Section 106 Review; 2012

HAZWOPER 40-hour certification; 2012

National Preservation Institute, Section 106 Basics; 2010

### REGISTRATIONS / CERTIFICATIONS

Meets and Exceeds the Secretary of the Interior's Professional Qualification Standards in History and Archaeology

Registered Professional Archaeologist No. 3532600; 2010

### SELECTED PROJECT EXPERIENCE

#### **Camarillo Airport Northeast Hangar Project Environmental Support; Coffman**

**Associates, Inc.; Camarillo, Ventura County, California.** SWCA prepared the biological and cultural resources reports for a utility extension and hangar development project at the Camarillo Airport. *Role: Principal Investigator. Conducted QA/QC of cultural studies.*

#### **On-Call Specialty Environmental Services Contract; Los Angeles Department of Public**

**Works, Bureau of Engineering; Los Angeles, Los Angeles County, California.** Services provided under on-call cultural resources contract. Tasks include Phase I cultural resources investigations, archaeological and paleontological construction monitoring, monitoring and discovery plans, and resource evaluations. Projects include Alameda Street Widening, San Pedro Plaza Park, Gaffey Pool and Bathhouse, Sheldon Skatepark, Main Street Lighting Improvement, and Penmar Water Quality Improvement. Work carried out in compliance with CEQA, NEPA, and Section 106 of NHPA. *Role: Principal Investigator / Contract Manager. Conducted QA/QC, review of deliverables, and oversight of technical work.*

#### **City of Corona General Plan Interim Technical Update and Environmental Analysis;**

**PlaceWorks; Corona, Riverside County, California.** SWCA provided multi-discipline support for this General Plan technical update and environmental analysis, including preparation of cultural, paleontological, and natural resources technical studies. *Role: Principal Investigator. Conducted QA/QC of cultural resources studies*

#### **POLA Berths 226-236 Evergreen Container Terminal EIR/EIS; CDM Smith, Inc.; Los**

**Angeles, Los Angeles County, California.** Under contract to CDM Smith, SWCA conducted a built environment/historic resources survey and evaluation and an archaeological survey, Extended Phase I Investigation, and evaluation project in support of the proposed Everport Container Terminal Development Project located at Berths 226–236 on Terminal Island, Port of Los Angeles, in Los Angeles County, California. This study includes the results of background research, an intensive-level field survey, extended Phase I testing and preparation of a historic resources survey report. *Role: Project Manager. Conducted QA/QC, review of deliverables, and oversight of technical work.*

#### **HRA POLA Matson Container Terminal; CDM Smith, Inc.; Los Angeles County,**

**California.** SWCA prepared a Historical Resource Assessment (HRA) for Matson Container Terminal at the Port of Los Angeles (POLA), California. Matson Container Terminal was constructed circa 1969 and has not previously been assessed for eligibility for listing in the NRHP, CRHR or for designation as a Los Angeles Historic-Cultural Monument (HCM). Since

the property is now 50 years old and several buildings at the terminal are being considered for demolition, the property requires evaluation per City of Los Angeles Harbor Department requirements. *Role: Project Manager. Conducted QA/QC of cultural resources studies*

## PAULA JUELKE CARR, M.A., SENIOR ARCHITECTURAL HISTORIAN

Ms. Carr is a historian with 27 years of experience in documentary research, technical report writing, interpretive exhibit development, and editing. She prepares architectural evaluations for NHPA Section 106 and CEQA compliance and conducts historical context research for historical archaeological sites. Ms. Carr meets the Secretary of the Interior's Professional Qualifications Standards in history and architectural history.

During her prior employment as an Associate Environmental Planner (Architectural History) with the California Department of Transportation, Ms. Carr was involved in several complex, multi-year capital projects, produced dozens of technical reports on a broad spectrum of California history topics, and peer reviewed and edited technical studies prepared by colleagues and consultants. Prior to her work with the state, she served as a professional editor for the reference periodical *America: History and Life*. She is adept with Spanish-language primary sources and has experience in transcribing and translating Spanish colonial and Mexican-era manuscripts.

Ms. Carr develops innovative interpretive exhibit projects and has extensive background working on exhibit projects for Caltrans, museums, visitor centers, and state and national parks. She makes technical subjects accessible and palatable to the general public.

### YEARS OF EXPERIENCE

27

### EXPERTISE

Familiar with complex, multidisciplinary transportation projects

Conducts architectural evaluations for NHPA Section 106 and CEQA

Skilled editor and peer reviewer of technical reports in historical context research

Develops innovative interpretive exhibits

Ability to work with Spanish language primary sources

### EDUCATION

M.A., History, Anthropology, Art History, Folklore and Mythology; University of California, Santa Barbara; 1981

B.A., Cultural Anthropology; University of California, Santa Barbara; 1972

### REGISTRATIONS / CERTIFICATIONS

Meets the Secretary of the Interior's Professional Qualifications Standards in history and architectural history

### SELECTED PROJECT EXPERIENCE (\* denotes project experience prior to SWCA)

#### **Santa Lucia Road Bridge Replacement Project Environmental Studies; Quincy Engineering, City of Atascadero; Atascadero, San Luis Obispo County, California.**

SWCA is providing environmental services, including preparation of all CEQA/NEPA documentation, technical studies, and permitting, for the replacement of the Santa Lucia Road bridge over Graves Creek in Atascadero. *Role: Architectural Historian. Researched historic bridge context and prepared the Historical Resources Evaluation Report and Historic Property Survey Report.*

#### **Dover Canyon Road Bridge Replacement Project Environmental Studies; San Luis Obispo County, California; Mark Thomas & Company, County of San Luis Obispo.**

SWCA is providing environmental services, including preparation of all CEQA/NEPA documentation, technical studies, and permitting, for the replacement of the Dover Canyon Road Bridge over Jack Creek in Adelaida. *Role: Senior Architectural Historian. Researched historic bridge context and prepared Historical Resources Evaluation Report.*

#### **Lopez Drive Bridge Seismic Retrofit Project Environmental Studies; San Luis Obispo County, California; Quincy Engineering, County of San Luis Obispo.**

SWCA is providing environmental services, including preparation of all CEQA/NEPA documentation, technical studies, and permitting, for the seismic retrofit of Lopez Drive Bridge over Lopez Lake in Arroyo Grande. *Role: Senior Architectural Historian. Researched historic bridge context in support of the Archaeological Survey Report.*

#### **Pismo Pier Architectural Assessment; Pismo Beach, San Luis Obispo, California; City of Pismo Beach.**

SWCA prepared an architectural assessment of the Pismo Pier to support previous determinations made in an Initial Study/Mitigated Negative Declaration, as required by USACE as part of formal consultation with the State Historic Preservation Officer under NHPA Section 106. *Role: Architectural Historian. Prepared a brief historical overview and architectural assessment.*

\* **South Coast 101 HOV Lanes; Santa Barbara County, California; California Department of Transportation, District 5.** *Role: Associate Environmental Planner (Architectural History). Reviewed technical documents, and assisted in preparation of draft environmental document. Work was performed while with Caltrans.*

## KEVIN HOWEN, B.S., GIS SPECIALIST

Mr. Howen is a GIS Specialist with over 5 years of experience working with GIS technology and methods in various environments including the USFS, County governments, educational institutions, and private consulting firms. Located at the San Luis Obispo SWCA Office, he works with the biological and planning departments providing spatial analysis and creating complex maps and figures. He specializes primarily in map design for reports such as EIRs, biological resources assessments, cultural resource reports, noise and air quality studies, transportation plans, storm water/watershed management plans, and climate action plans.

Along with map creation for reports, Mr. Howen regularly performs spatial analysis including acreage and impact calculations, point density mapping, view shed analysis, and elevation and contour creation. Software tools regularly utilized to perform GIS tasks include ArcGIS Desktop, AutoCAD, Adobe Illustrator and Photoshop, QGIS, and Pathfinder Office.

### YEARS OF EXPERIENCE

7

### EXPERTISE

ESRI ArcGIS Desktop

Adobe Illustrator / Photoshop

AutoDesk AutoCAD

ERDAS Imagine

FAA Licensed Drone Pilot

### EDUCATION

B.S., Earth Sciences; m: Geographic Information Systems; California Polytechnic State University, San Luis Obispo; 2012

### REGISTRATIONS / CERTIFICATIONS

UAS Remote Pilot Certificate, California No. 4003771; Federal Aviation Administration; 2017

### SELECTED PROJECT EXPERIENCE

**Kern River Bike Trail Western Expansion Environmental Studies; County of Kern Public Works Department; Kern County, California.** SWCA is preparing a WQA, NES, BA, Botanical Survey, Buena Vista Shrew Survey, Blunt-nosed Leopard Lizard Survey, Water Bank Training, and IS/MND for the construction of approximately 7 miles of a bikeway from the existing Kern River Parkway Bike Trail to the Buena Vista Aquatic Recreation Area. *Role: GIS Specialist. Prepared graphics and mapping for the biological assessment documents.*

**Bob Jones Pathway NEPA and CEQA Studies; County of San Luis Obispo; San Luis Obispo County, California.** SWCA prepared the technical studies necessary to satisfy NEPA and CEQA requirements for construction of the Phase II of the Bob Jones Pathway, a Class I and Class III pedestrian/bicycle trail connecting the city of San Luis Obispo and the community of Avila Beach. Studies prepared included a Caltrans NES, BA, California Red-Legged Frog Survey Report, Wetland Assessment, Visual Impacts Study, Farmland Report, and Section 106 studies (historical and archaeological reports). *Role: GIS Specialist. Prepared graphics and mapping for the biological assessment documents.*

**Avila Beach Drive Bridge No. 1 Seismic Retrofit Project Environmental Studies; County of San Luis Obispo; San Luis Obispo County, California.** SWCA is providing environmental services, including preparation of all CEQA/NEPA documentation, technical studies, and permitting, for the seismic retrofit of the Avila Beach Drive bridge over San Luis Obispo Creek where the creek empties into San Luis Bay. *Role: GIS Specialist. Update map and habitat data, run area analysis on habitat and boundary, and prepare graphics.*

**Bello Bridge Replacement Project Environmental Studies; City of Pismo Beach, Quincy Engineering; San Luis Obispo County, California.** SWCA is providing environmental services, including preparation of all CEQA/NEPA documentation, technical studies, and permitting, for the replacement of the Bello Street bridge over Pismo Creek in the city of Pismo Beach. *Role: GIS Specialist. Utilizing GIS methods to create and calculate CDFW and USACE jurisdictional impacts, and digitizing habitat layers and provide analysis of temporary and permanent impacts during construction.*

**Bridge Street Bridge Replacement Project Environmental Studies; Quincy Engineering, City of Arroyo Grande; San Luis Obispo County, California.** SWCA provided environmental services, including preparation of all CEQA/NEPA documentation, technical studies, and permitting, for the project, which will replace the existing bridge crossing Arroyo Grande Creek near the intersection of West Branch Street and Bridge Street in the city of Arroyo Grande. *Role: GIS Specialist. Compiled GIS, GPS, and CNDDDB data and created project maps.*

## JAIMIE JONES, TECHNICAL EDITOR

Ms. Jones is a technical editor with experience in environmental planning, with an emphasis on environmental document coordination, editing, and preparation. She regularly works with representatives of local, state, and federal agencies; coordinates with project applicants; and has developed a reputation for problem solving and conflict resolution. As Technical Editor, Ms. Jones monitors document quality control to ensure that content and formats meet SWCA and agency standards. She has directed compilation of hundreds of CEQA/NEPA compliance documents, biological resources studies, cultural resources studies, and regulatory permit applications. She assists project managers by organizing projects and schedules, assisting in the delegation of team responsibilities, preparing public notices and adhering to the requirements pertaining to these notices, and assisting with management of and correspondence with subconsultants.

### YEARS OF EXPERIENCE

15

### EXPERTISE

Technical editing

Environmental document coordination, preparation, and compilation

Project management assistance

Environmental planning

### EDUCATION

A.A. coursework, Liberal Arts; Los Angeles Harbor College; 2003

A.S. Coursework, Fire Science; Los Angeles Harbor College; 2003

Professional Sequence in Editing Certificate; UC Berkeley Extension; 2018

### TRAINING

CEQA Basics Workshop Series, Association of Environmental Professionals; 2006, 2014

CEQA Advanced Workshop Series, Association of Environmental Professionals; 2017

California Association of Environmental Professionals Annual Conferences; 2007–2018

### TRAINING

Member, Association of Environmental Professionals – Channel Counties Chapter

### SELECTED PROJECT EXPERIENCE

**Kern River Bike Trail Western Expansion Environmental Studies; County of Kern Public Works Department; Kern County, California.** SWCA is preparing a WQA, NES, BA, Botanical Survey, Buena Vista Shrew Survey, Blunt-nosed Leopard Lizard Survey, Water Bank Training, and IS/MND for the construction of approximately 7 miles of a bikeway from the existing Kern River Parkway Bike Trail to the Buena Vista Aquatic Recreation Area.

**Midway Road Shoulder Construction Project Biological Services; Kern County, California; Kern County Roads Department.** SWCA prepared a Natural Environment Study analyzing the environmental impacts of construction of an asphalted shoulder along a 4-mile section of Midway Road, located between Highway 33 and Highway 119 just west of the city of Bakersfield. *Role: Technical Editor. Conducted technical editing and document compilation for the report.*

**State Route 180 West Corridor Route Adoption Study; Fresno County, California; Parsons Transportation Group.** SWCA prepared a Biological Resources Study Report and a Wetlands Evaluation Study to identify the potential for sensitive species, habitats, and wetlands along the study route, which traverses multiple alternative routes for approximately 70 miles from U.S. Interstate 5 to the Fresno city limits. *Role: Technical Editor. Conducted technical editing and document compilation for the biological reports.*

**Solari Sand and Gravel Project EIR; Kern County, California; Kern County Planning and Community Development Department.** SWCA is preparing an EIR for a proposed 543-acre aggregate mining project that includes sand and gravel extraction, asphalt concrete and Portland cement concrete production plants, and asphalt and concrete recycling operations. *Role: Technical Editor. Conducting technical editing and document compilation for the Administrative Draft EIR currently being prepared.*

**Bob Jones Pathway Phase II – San Luis Obispo to Ontario Road CEQA and NEPA Studies; San Luis Obispo County, California; County of San Luis Obispo Department of Public Works.** SWCA prepared a CEQA MND and a staff report for the 4.4-mile pedestrian/bicycle trail, as well as NEPA technical studies, including a Caltrans NES, Biological Assessment, California Red-Legged Frog Survey Report, Wetland Assessment, Visual Impacts Study, Farmland Report, and National Historic Preservation Act Section 106 studies. *Role: Technical Editor. Conducted technical editing and document compilation of project reports.*





## EDUCATION

B.S., Environmental Health Science,  
California State University, Fresno, 1994

B.A., Urban and Environmental Planning,  
California State University, Fresno, 1994

Community Noise Enforcement  
Certification, Rutgers State University of  
New Jersey, 2001

## TRAINING

CAPCOA Health Risk Assessment  
Training, SJVAPCD, 2015

California Emissions Estimator Model  
Training, MBUAPCD, 2012

Air Toxics Health Risk Assessment &  
HARP, BlueScape Environmental &  
Dillingham Software Engineering, 2004

Sound Power Measurement & Analysis,  
Briel & Kjaer, 2003

Vibration Measurement & Analysis,  
Briel & Kjaer, 2003

Acoustics & Measurement Principles,  
Briel & Kjaer, 2003

Air Dispersion Modeling,  
Trinity Consultants, 2001

ISC/AERMOD Air Dispersion Modeling,  
Lakes Environmental, 2001

FHWA Traffic Noise Modeling,  
Harris Miller Miller & Hanson, 1998

## PROFESSIONAL AFFILIATIONS

Air and Waste Management Association  
Acoustical Society of America  
Association of Environmental  
Professionals  
American Planning Association

## KURT LEGLEITER

### Principal

Kurt Legleiter is the Principal Air Quality and Noise Specialist and sole proprietor of AMBIENT Air Quality & Noise Consulting. His experience spans over 25 years and encompasses both the public and private sectors. He specializes in the preparation of air quality, greenhouse gas, energy use, noise, and groundborne vibration impact assessments in support of community planning and development projects that are subject to review under the California Environmental Quality Act and the National Environmental Policy Act. Mr. Legleiter is proficient in the use of various air quality and noise modeling software programs, including CalEEMod, AERMOD, ISCST3, HARP, CALINE4, SoundPlan, and FHWA's Traffic Noise Model.

## EXPERIENCE

- 2004-Present  
AMBIENT Air Quality & Noise Consulting, Principal
- 1997-2004  
EDAW, Inc. Air Quality and Noise Practice Manager
- 1995-1997  
Michael Paoli and Associates, Environmental Planner
- 1993-1995  
San Joaquin Valley Air Pollution Control District, Planner I

## REPRESENTATIVE PROJECTS

Mr. Legleiter's air quality- and noise-related experience includes the preparation and oversight of air quality, greenhouse gas, energy use, noise, and groundborne vibration studies. Representative past and current projects include the following:

- Peach Avenue Widening Project, City of Fresno
- Peach Avenue Improvement Project, City of Fresno
- Shaw Avenue Widening Between N. DeWolf Avenue and N. McCall Avenue Project, City of Clovis
- Shaw Avenue Widening Between Locan Avenue and Maine Avenue Project, City of Clovis
- San Joaquin Bridge on Italian Bar Road Replacement Project, County of Fresno
- N. Willow Avenue Widening Project, City of Clovis

## **ELLIOT R. HARO**

Principal Scientist

Mr. Haro has over 15 years of experience in the environmental field, directing, managing and performing environmental site assessments and remediation activities. Mr. Haro's project management experience includes proposal and cost estimate preparation for site assessments and remediation projects, design of soil and groundwater remediation systems, in-house staff and subcontractor coordination, technical report preparation, and permit acquisition. Mr. Haro has managed and performed numerous Phase I and Phase II Environmental Site Assessments (ESAs) as well as site investigation and remediation field activities including air, soil, groundwater, and surface water sampling, groundwater monitoring well installations, and remediation system operations and maintenance. He has prepared various environmental reports including site assessment reports, feasibility studies, remedial/corrective action plans, remedial work plans and health-based risk evaluations.

## **EXPERTISE**

- Phase I and II Environmental Site Assessments
- Soil and Groundwater Investigations
- Soil and Groundwater Remediation
- Project Management
- Permitting – Environmental and Construction

## **WORK HISTORY**

- |                                  |                 |
|----------------------------------|-----------------|
| • Haro Environmental, Inc.       | 2013 to Present |
| • Equipoise Corporation          | 2007 to 2013    |
| • Rincon Consultants, Inc.,      | 2004 to 2007    |
| • TN & Associates                | 2002 to 2004    |
| • Creek Environmental Laboratory | 1999 to 2002    |

## **EDUCATION AND CERTIFICATIONS**

- Registered Environmental Assessor I (REA I), California, No. 30228 (Former; DTSC discontinued the REA program effective July1, 2012)
- M.S., Agriculture – Soil Science Specialization, California Polytechnic State University, San Luis Obispo, CA
- B.S., Soil Science, California Polytechnic State University, San Luis Obispo, CA
- OSHA and EPA 40-hour safety training and 8-hour hazardous materials refresher courses

## **MAJOR PROJECT DESCRIPTION**

### **Multiple Phase I Initial Site Assessments and Preliminary Site Investigations, Various Locations, CA**

- |   |  |                                      |
|---|--|--------------------------------------|
| • Project Manager for 8 ISAs in Fresno County | • ISA and PSI for City of Modesto                          | • 10 ISAs for San Luis Obispo County |
| • Sit Inspections                             | • Evaluated for the possible presence of lead and asbestos |                                      |
| • Interviews                                  |  |                                      |
| • Government records review                   |  |                                      |

**TIMOTHY E. NELLIGAN**

Professional Engineer

Mr. Nelligan is a California-State licensed Professional Engineer #C68666 and has experience in the areas of environmental compliance, permitting, and remedial design engineering. He has conducted remedial investigations (RIs), feasibility studies (FSs), remedial design/remedial action (RD/RA), corrective action plans (CAPs) at several California State and Federal Superfund site, oil refineries, and other industrial facilities. He has also prepared Storm Water Pollution Prevention Plans (SWPPPs), Spill Prevention Containment and Countermeasures (SPCCs), Hazardous Materials Business Plans (HMBPs), and Wastewater Surcharge Statements.

**EXPERTISE**

- Project Management
- Soil and Groundwater Investigations
- Remediation Technology Evaluation
- Engineering Design
- Construction Oversight
- Feasibility Study/RAP Preparation

**WORK HISTORY**

- |                                    |                 |
|------------------------------------|-----------------|
| • Haro Environmental, Inc.         | 2013 to Present |
| • Katahdin Environmental           | 2007 to Present |
| • Equipoise Corporation            | 1999 to 2007    |
| • Harding Lawson Associates        | 1998 to 1999    |
| • Chemical Data Management Systems | 1997 to 1998    |

**EDUCATION AND CERTIFICATIONS**

- Registered Professional Engineer, California 2005, No. C68666
- B.S., Civil and Environmental Engineering, California Polytechnic State University, San Luis Obispo, 1998
- OSHA and EPA 40-hour safety training and 8-hour hazardous materials refresher courses

**MAJOR PROJECT DESCRIPTION****Superfund Site, Pesticide Reformulator, Bakersfield, CA**

- |                      |                       |                   |
|----------------------|-----------------------|-------------------|
| • Design Engineer    | • Oversee Treatment   | • Lead Agency: US |
| • Design Treatment   | • of Tank Contents    | EPA               |
| System               | • Pesticides, Metals, |                   |
| • 250,000 Gal        | and Semi-volatiles    |                   |
| Wastewater and 4,000 |                       |                   |
| Gal Sludge           |                       |                   |