

- LEGEND**
- 1-1/2" PVC PIPE
 - LATERALS
 - MAINLINE PROTECTION
 - 2" AIR VENT
 - MANIFOLD CONTROL VALVE
 - MANIFOLD FLUSH
 - REDUCER
 - RISER
 - TREE/VINE
 - LENGTH OF HOSE RUN
 - SPRINKLER
 - HALF SPRINKLER

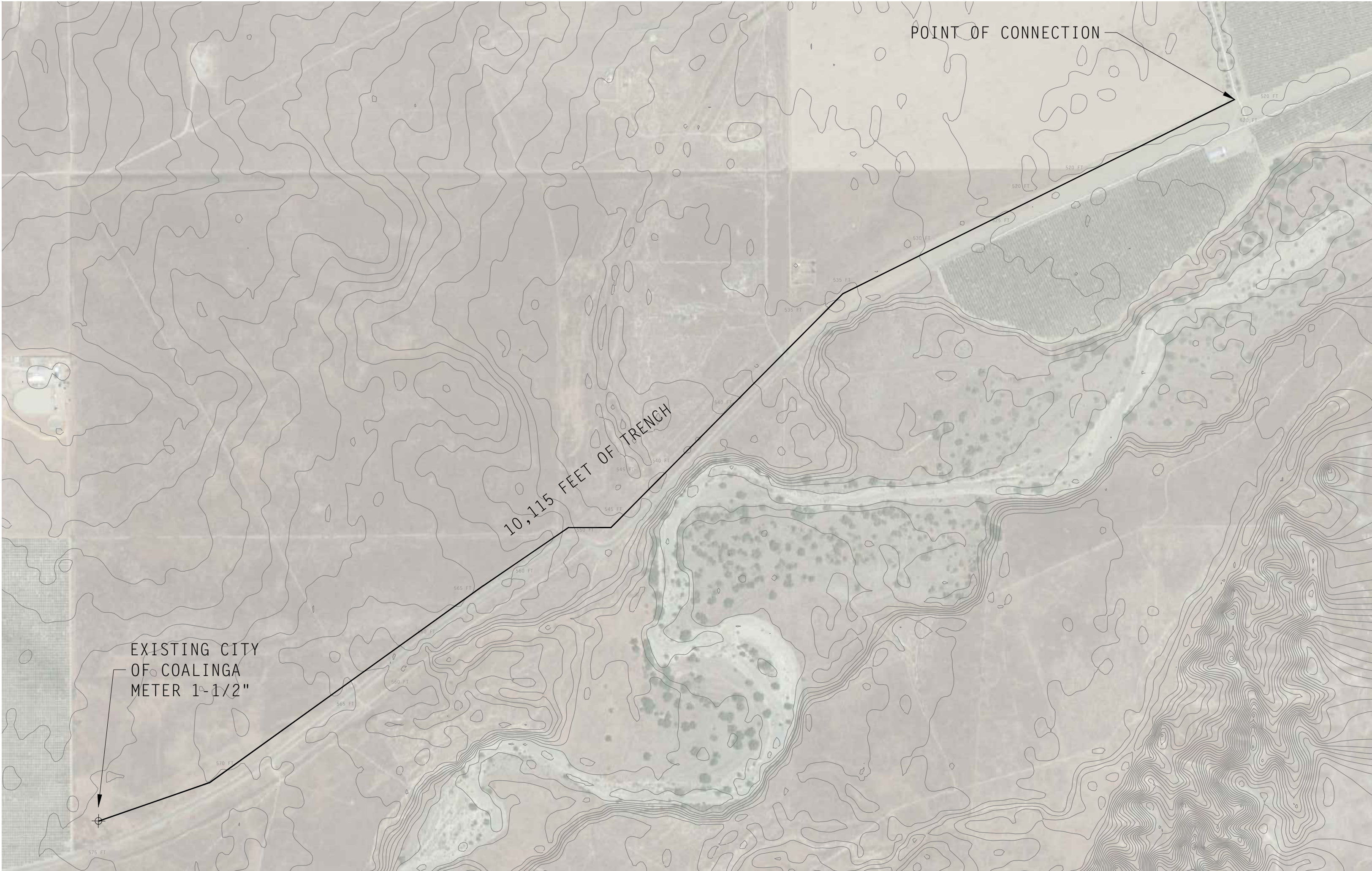


PROJECT NOTES:

EXISTING STEEL
DOMESTIC WATER PIPE

1-1/2" PIPE = 8.7 GPM

NOTE: ADDITIONAL AIR VENTS MAY BE
REQUIRED AT HIGH POINTS IN THE SYSTEM.
NUMBER AND LOCATION TO BE DETERMINED AT
THE TIME OF INSTALLATION. THE DRAWINGS
ARE A REPRESENTATION OF AN ITEM. IT IS
THE RESPONSIBILITY OF THE INSTALLER TO
VERIFY THE CORRECT COMPONENTS.



CUSTOMER:

TURK STATION

LOCATION:

DOMESTIC WATER LINE
CITY OF COLINGA, CA

**DESIGN
INSTALLATION
SERVICE**



20550 Golden State Blvd.
MADERA, CA 93637
PHONE (559) 665-3700
FAX (559) 661-4489

**LANDMARK
IRRIGATION, INC.**
MADERA • BAKERSFIELD • WOODLAND
EXETER • LOS PALOS • GILROY • SOLEAD

APPROVED BY: _____
DATE: _____