



4971 ALLISON PKWY SUITE A
VACAVILLE, CA 95688

(800) 677-6661 Fax: (707) 446-7933

Quote No. **121019**

QUOTATION

Customer
Contact Eric Deleon
Company City of Coalinga
Address 135 E. Sacramento

City Coalinga **State** CA **Zip** 93210
Phone 1-559-974-1257 Mobile / 1-559-935-1533 Work

Date 12/10/2019
Expiration 1/31/2020
Salesman Leighton White
Terms NET-30
Delivery DESTINATION
FOB DESTINATION

Item	Qty	U/M	Part No.	Description	Unit Price	TOTAL
				C550 Small "Standard" Package: (Standard Controller or Battery on Board) Part No: <u>10/C550-STD-C554-PKG</u>	\$45,106.00	
1	1	ea		C554 Crawler Assembly		
2	1	ea		Powered Drum with 305m (1000') cable, w/ Swivel		
3	1	ea		Command Module		
4	1	ea		Pendant Controller		
5	1	ea		Pan/Tilt Camera		
6	1	ea		Small Elevator (Gooseneck)		
7	1	ea		Small, medium and large wheel sets		
8	1	ea		5m Link Cable		
9	1	ea		Downhole set (top/bottom roller, rope, poles)		
10	1	ea		Downhole hook and strap kit		
11	1	ea		6-15" Multiple Pipe Options		
12	1	ea		Centering in 15" w/Small Elevator included		
13	1	ea		Handheld Controller		
14	1	ea		Localization Pack (Software, grease, main cable, USB interface cable, accessory bag)		
15	1	ea		C550 Cable Blanking Tow Eye		
16	1	ea		Training - Two (2) days on-site		
				SUB-TOTAL	\$45,106.00	
				CA STATE SALES TAX @ 8.975%	\$4,048.26	
				FREIGHT	\$0.00	
				GRAND TOTAL DELIVERED AND TRAINED	\$49,154.26	

Weco

Offering Complete Solutions
For Our Municipal and Contractor Customers
Visit our web site- <http://www.wecoind.com>

Subtotal	
Shipping & Handling	
Taxes	
Other	
TOTAL	

flexitrax™ C550c

Comprehensive. Convenient. Connected.

Portable video inspection for drainage, water and plumbing networks



flexitrax™ C550c

Portable, modular pipeline inspection – designed with you in mind

Inspect pipes faster to complete more surveys each day

- The intuitive interface is quick to set up and simple to operate.
- Dedicated function keys make it easy to use.
- Built-in rechargeable batteries lasting all day.

Stay connected

Reports are ready to share as soon as your survey is complete.

- WiFi connection for sending reports via DropBox or email.
- Advanced connectivity with USB, HDMI and ethernet, making it easy to view and export your data.
- Video streaming to nearby devices.

A suite of reporting formats

Expand your client base by offering a variety of tailored surveys through;

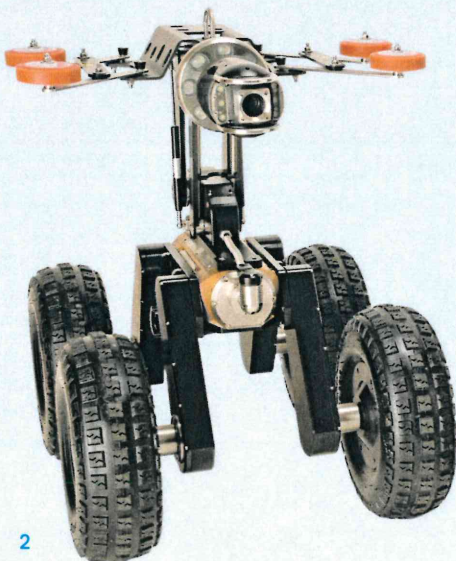
- Integrate with Cues GraniteNet software to create NASSCO standard compliant reports including PACP, LACP, and MACP.
- Basic reports.

Customised solutions

- Modular by design, the flexitrax C550c system can be paired with a range of products and accessories.
- Our solution gives you flexibility when you need it, enabling you to survey pipes from 1¼" / 32mm to 60" / 1500mm.

Crawlers

The two crawlers enable you to center your camera across a wide range of pipe sizes.



Auxiliary lighthead
for additional light in
large or dark pipes



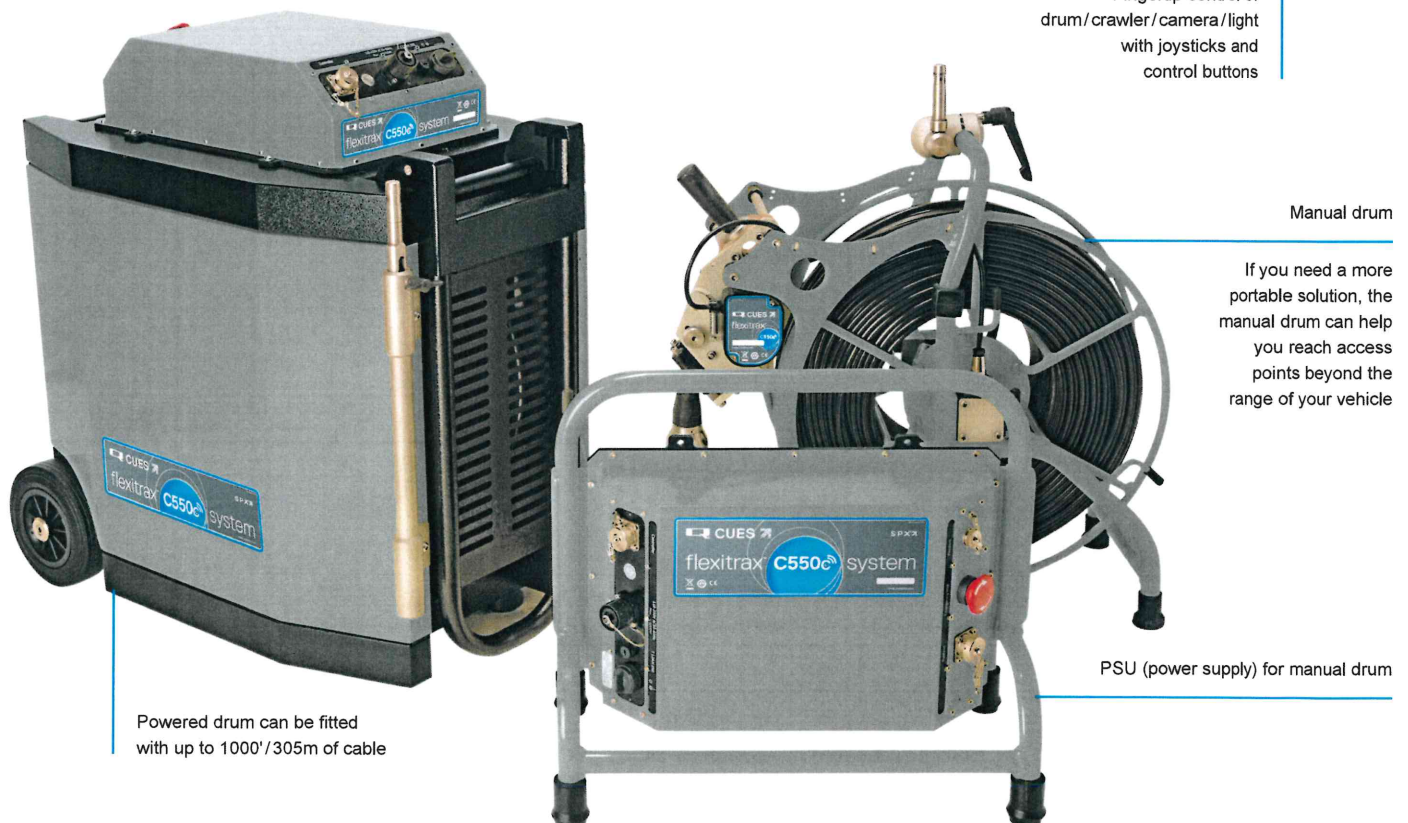
P356 crawler
Center in pipes
from 6" / 150mm
to 60" / 1500mm

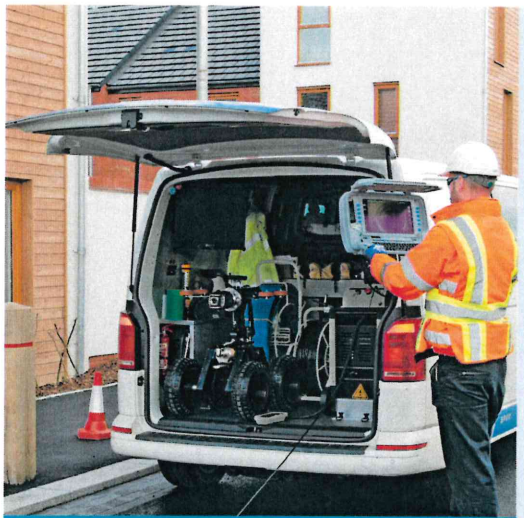
P354 crawler
Center in pipes
from 4" / 100mm
to 12" / 305mm

flexitrac C550c controller

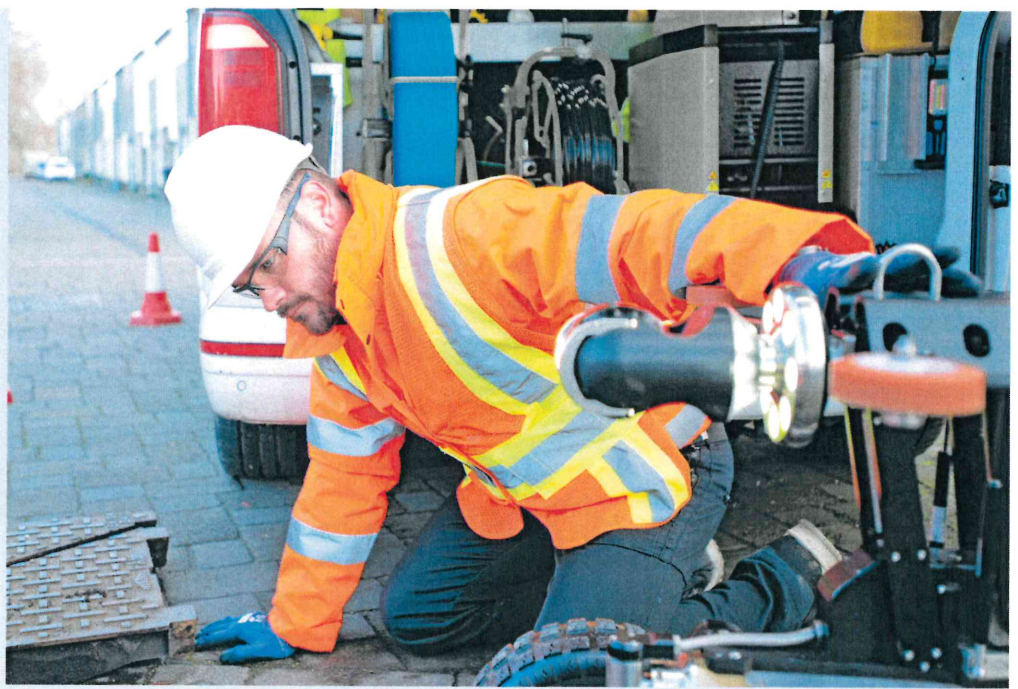


Drums





Easier



Easier. Faster. Simpler.

The flexitrac C550c is designed around simplicity of operation. Ready to use in 30 seconds from powering on, it requires minimal training to operate, letting you concentrate on pipe inspection.

A large 12.1"/307mm HD, daylight visible screen combined with full-size keyboard and dedicated function keys guide you through the survey process, making the system faster and easier to use.

Built in is a high capacity internal lithium-ion battery, providing power for up to a full day's typical usage, and 128Gb of solid state memory, sufficient for over 90 hours of video recording.



Faster



Simpler

Tailored solutions

This portable and modular crawler system enables operators to customise the flexitrac C550c solution for the inspection of a vast range of pipes, in all locations.

The flexitrac C550c can be readily transported and easily wheeled onto site through our rugged, ergonomic design, allowing you to reach access points beyond the range of your vehicle.



Survey an extensive range of pipes

Survey pipes as small as 1 1/4"/32mm or as large as 60"/1500mm.

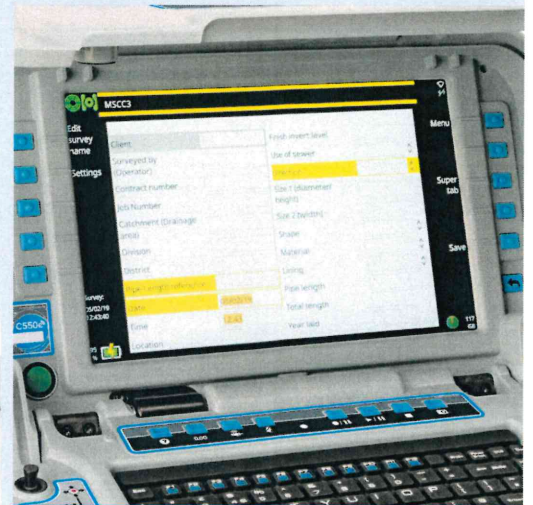


Comprehensive

Reporting

Use GraniteNet software to integrate the flexitrac C550c to your asset inspection, decision support, and work management program.

Additionally, the flexitrac C550c has complete on-board reporting capabilities and connectivity, quickly delivering content-rich survey reports to you and your customers. Creating a comprehensive report is quick and easy;



Convenient

1 Choose the reporting template

Use customisable report templates for each occasion using customizable observation codes.

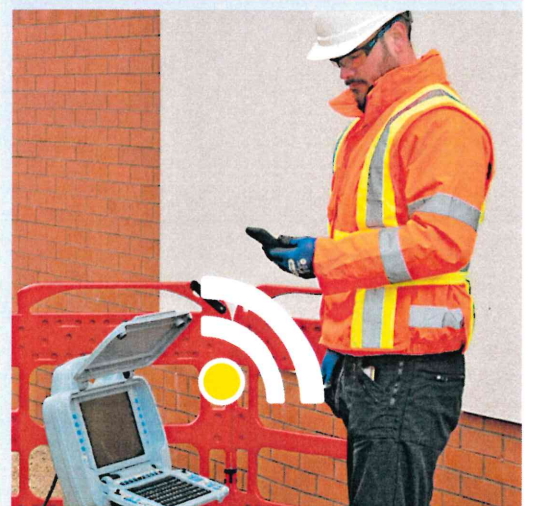
2 Complete the survey

Enter your survey details using a tactile, full-size keyboard. Dedicated and context-sensitive function buttons guide you through the survey process.

3 Distribute the report

Share reports, images and video as soon as your survey is complete via DropBox or email*. Alternatively you can export a report to a USB stick or stream videos to a nearby device.

(*WiFi access point required, such as mobile phone, tablet or dongle)



Connected



Accessories and Options

When building your flexitrax C550c solution, centering your camera in the middle of the pipe is key. Once the drum and crawler system have been chosen, enhance your pipeline inspection capabilities by incorporating our expert range of accessories to meet the demands of the various pipes you are working in.

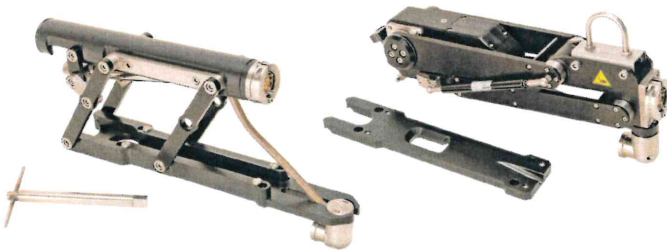
Wheels

Select from a range of small, medium or large wheels and/or spacers to suit your pipe size and terrain.



Elevators

Both manual and powered elevators are available, for centered inspection up to 36"/900mm.



Other accessories are available.

Pushrods

A choice of pushrod reels of varying length and flexibility can be connected to the flexitrax C550c system. Use a pushrod to survey pipes as small as 1¼"/32mm.



Cameras

Choose from three camera models; Forward view only, Pan and Tilt or Pan and Tilt, with 10 x optical zoom.



Cradle

Combine the cradle and elevator together with the large crawler for centered inspection up to 60"/1500mm.



Locator

A sonde is integrated into each crawler, enabling you to use a suitable locator to pinpoint the crawler's location.

With three sonde frequencies, the RD5100™ S can be used to trace the crawler whilst in use.



The flexitrax C550c crawler system is fully compatible with Pearpoint's flexiprobe™ C540c, P540c and P340 range.

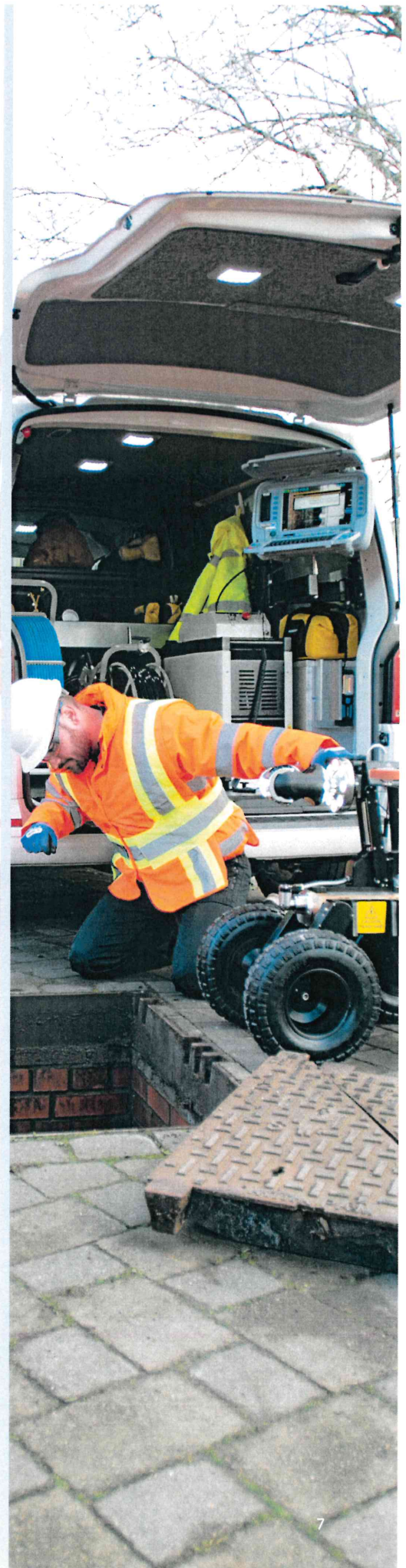
Specifications

flexitrax C550c	
Battery capacity	Internal Li-Ion Battery (4S2P) - 14.68V, 6.4Ah (93.95Wh)
Battery run-time	Up to one day's typical usage, 7.5hrs view only/5hrs continuous recording*
Cameras	Forward View with 120 Lumen LEDs Pan/Tilt with 210 Lumen LEDs Pan, Tilt and 10 x optical Zoom with 420 Lumen LEDs
Connectivity	USB 2.0 (x3), HDMI video out, analog video in (PAL/NTSC), headphones out, microphone in, rod/camera/drum connectivity and 802.11 b/g/n WiFi
Construction	High impact ABS and powder-coated, zinc-plated mild steel
Controllers	flexitrax C550c command module with integrated joysticks to control the camera and crawler Optional pendant controller for deployment phase
Dimensions	17.5" x 15.2" x 6.1"/445mm x 385mm x 155mm
Display	12.1"/307mm, 1280 x 800 color LCD
Drums	Manual drum or powered drum, with cable length options from 500' to 1000'/150m to 305m
Environmental Protection	flexitrax C550c controller: IP55 Power supply/charger: IP54 rated for indoor use
Input power requirements	10-30V, 60W
Power sources	Power from drum, external mains PSU or internal battery
Power supply	Mains input 100-240VAC, 50-60Hz, 1.7A DC output 16V, 3.75A, 60W
Recording formats	Video: H.264. Audio: MP3. File format: MP4
Report File Formats	Basic reports, MSCC3 & 4: docx MSCC5: docx or Xml WinCan: Xml Video: MP4 Image: JPEG
Storage	Integral 128Gb and support of USB flash storage
Temperature	Storage: 4°F to 176°F/-20°C to +80°C Operating: 14°F to 122°F/-10°C to +50°C Charging: 32°F to 104°F/0°C to +40°C
Weight	16lb / 7.25 kg
Wheels	Small, medium and large solid rubber and large pneumatic for conventional/silted pipes Rasp wheels for smooth/relined pipes

*May vary depending on power management settings chosen, ambient conditions, accessories attached, recording time and other factors

READY TO GET STARTED

Visit www.cuesinc.com





Visit www.cuesinc.com

Global locations

CUES (USA)

3600 Rio Vista Avenue, Orlando, FL 32805, USA

Toll Free: +1 (800) 327 7791 salesinfo@cuesinc.com

CUES (Canada)

1675 Sismet Road, Mississauga, Ontario L4W 1P9, Canada

Toll Free: +1 (877) 297 8957 larryc@cuesinc.com

Pearpoint (USA)

39-740 Garand Lane, Unit B, Palm Desert, CA 92211, USA

Toll Free: +1 800 688 8094 Tel: +1 760 343 7350 pearpoint.sales.us@spx.com

As the world's leading manufacturer of water, wastewater, and stormwater inspection equipment, CUES provides the necessary tools for both pipeline inspection and repair. For 50+ years, CUES has manufactured the most rugged and reliable pipeline inspection equipment in the industry.

© 2019 CUES, Inc. All rights reserved. CUES, Inc. is a subsidiary of SPX Corporation. Pearpoint, flexitrac, flexiprobe and RD5100S are trademarks of Radiodetection Ltd., an affiliate of CUES, Inc. WRc, WinCan, HDMI and DropBox are registered trademarks of their respective owners. Due to a policy of continued development, we reserve the right to alter or amend any published specification without notice. This document may not be copied, reproduced, transmitted, modified or used, in whole or in part, without the prior written consent of CUES, Inc.