

CSLB #980409  
DIR 1000004282  
www.source-mme.com  
Toll Free 1-888-484-9968

December 10, 2019

City of Coalinga  
155 Durian Street  
Coalinga, CA 9

Tel: 559-974-1257  
edeleon@coalinga.com

Attention: Eric De Leon

We are pleased to provide the following budget quotation on the Rausch USA Pipe MOBILE Pro CCTV Inspection System for your review.

One (1) Each Rausch USA MOBILE Pro System Complete with the Following Standard Features:

**Mobile Pro C 135 System:**

- MOBILE Pro Control Unit Assy.
- Integrated 12" Monitor
- PC Control Out
- Two Multi-Functional Joysticks
- Digital Recorder w/ Text Generator, Photo, Video
- Cubix 300 w/1000 Ft. Cable Drum Assy.
- C 135 MOBILE Pro Crawler
- KS 135 NTSC MOBILE Pro Camera
- Rubber Wheel Set including 4 Each of 6" Wheels, Spacer Hubs (for 8"+), 10" Wheels
- Lifting/Lowering Hook L135/SAT135
- Cart-In Rope
- Air Pressure Filling Station
- Deflection DN150 Pulley Assembly
- Spare Parts L135 Kit
- Spare Parts KS135 Kit

**L135 VTS Electric Lift w/Rearview Camera NTSC**

**512 Hz/33Khz L135C Locating Sensor, Sonde Mounts to Rear Connection**

**CCTV Tool Kit**

**Stone Wheels Kit:**

- (4) Stone 6" Wheels L135 3-1/2" x 1/2" (93mm x 17mm)
- (4) Stone 10" Wheels Stackable 5" x 1-1/4" (125mm x 32mm)

**Aggressive Wheels Kit:**

- (4) Aggressive Traction 8" Wheels 95x17
- (4) Aggressive Traction 6" Wheels 85x17

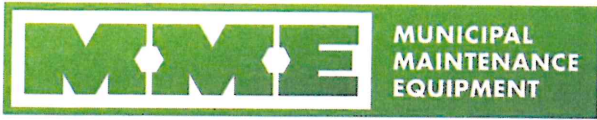
4634 Mayhew Road  
Sacramento, CA 95827  
Office: 916-922-1101  
Fax: 916-922-1034

4750 Caterpillar Road, #D  
Redding, CA 96003  
Office: 530-243-4856  
Fax: 530-243-1447

1913 Nancita Circle  
Placentia, CA 92870  
Office: 714-528-8770  
Fax: 714-528-8744

1930 W. Winton Avenue, #8  
Hayward, CA 94545  
Office: 510-670-0230  
Fax: 510-670-9003

6230 Greyhound Lane, #K  
Las Vegas, NV 89122  
Office: 888-484-9968  
Fax: 916-922-1034



December 10, 2019  
City of Coalinga  
Rausch USA MOBILE Pro C 135 System Budget Quotation  
Page 2

**Additional L100C/KS135 20 Degree Illumination Short Range Kit including Spare Parts**

**Two-Day on-Site Training at Customer's Location**

Budget Price F.O.B. Coalinga, CA	\$ 93,963.00
8.975% Estimated Sales Tax	<u>8,433.18</u>
Total	\$102,396.18

If optional POSM Pro License Software Package (POSM Pro Full Version Software, Including 1 Year Software Support and Sensoray POSM Video Encoder/Decoder Module is desired **ADD** \$ 9,467.00

- Optional item does not include sales tax.
- Quotation includes delivery.
- 1 Year limited manufacturer's warranty on parts and labor.
- Normal delivery 60-90 days A.R.O.
- Sales tax applicable at time of delivery will be shown on invoice.
- Terms: Net 30
- Quotation valid for 30 days.

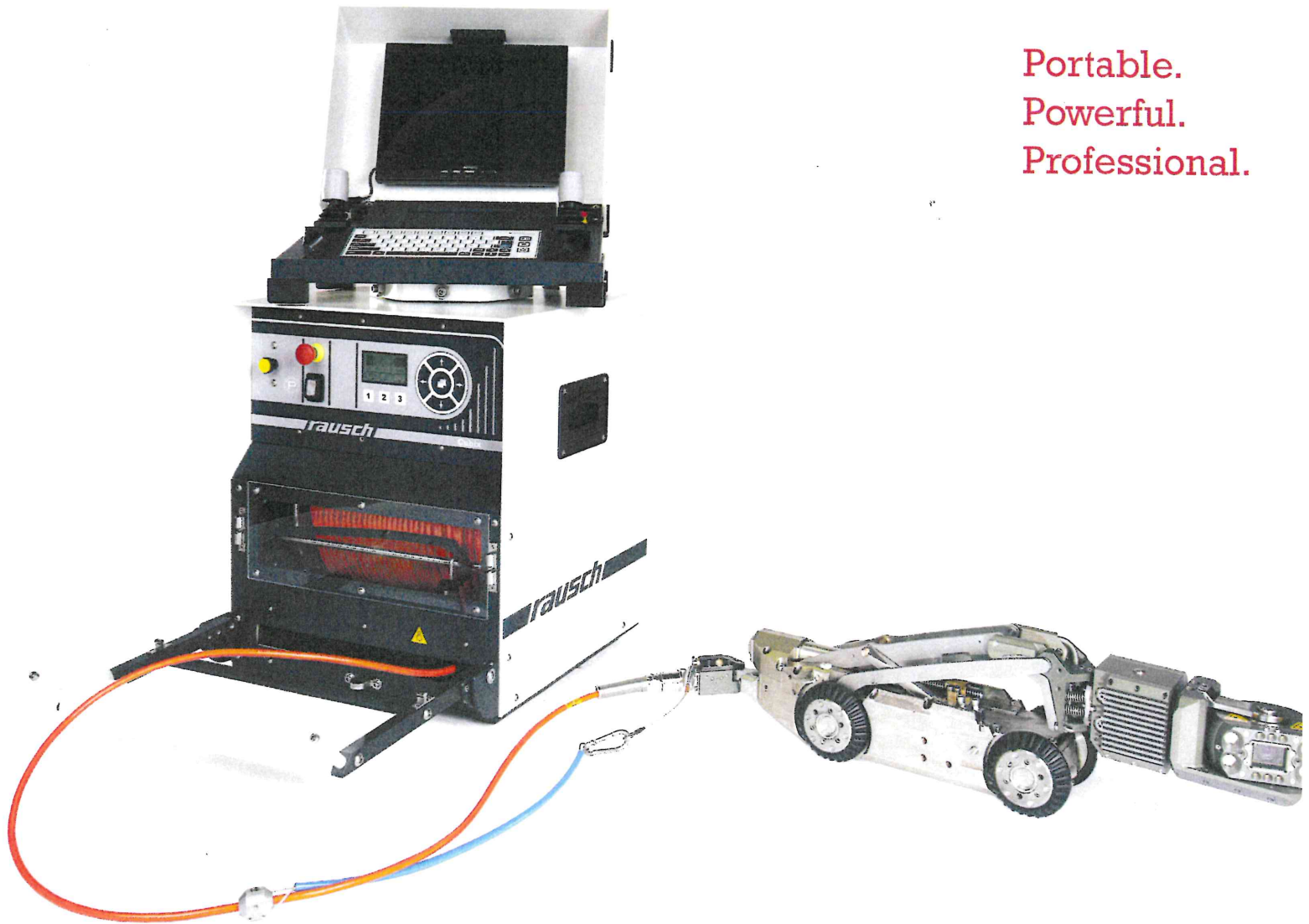
Thank you for your interest in this fine product line. Should you have any questions or need further assistance, please let us know. We look forward to being of service.

Sincerely,  
Municipal Maintenance Equipment, Inc.

*Adam Horch*

Adam Horch,  
Territory Sales Manager

Portable.  
Powerful.  
Professional.



# MOBILE pro

Robust design in a portable package.

*Application range from 4" up to 78" pipe diameter*



www.source-mme.com  
CSLB #980409  
Toll Free 1-888-484-9968

4634 Mayhew Road  
Sacramento, CA 95827  
Office: 916-922-1101  
Fax: 916-922-1034

4750 Caterpillar Road, #D  
Redding, CA 96003  
Office: 530-243-4856  
Fax: 530-243-1447

1913 Nancita Circle  
Placencia, CA 92870  
Office: 714-528-8770  
Fax: 714-528-8744

1930 W. Winton Ave., #8  
Hayward, CA 94545  
Office: 510-670-0230  
Fax: 510-670-9003

**rausch** USA  
www.rauschusa.com



# MOBILE pro

www.rauschusa.com

Application range from 4" up to 78" pipe diameter

MOBILE pro control unit has a built-in 12" LCD monitor and digital video recorder. The crawler & camera are controlled via 2 multifunction joysticks.

## Features

- 7" touch display for system status and settings and built-in keyboard
- SD-Card slot for video and photo recording
- USB Port for macro and overlay control via external PC
- Swivel mount to cable drum Cubix 300
- Video output for external devices
- Locating sonde control for camera/crawler systems
- Dimensions: 16.5" x 12.6" x 6.25"

MOBILE pro is able to record inclination, temperature values, and laser crack measurements when it is connected with a PC.



## Cubix 300 Motorized Cable Drum with 1,000' of .303" cable

- LCD display for distance counter and status display
- Two integrated carrying handles for mobile applications
- Electronic brake and cross-lead spindle for cable winding
- Slip ring connection for rapid cable change
- Fully synchronized to the camera/tractor unit

## Technical Data

- Power Supply 100-250V AC (50/60 Hz)
- Power consumption max. 200W
- Dimensions: 16.75" L x 16.75" W x 18.9" H
- Weight: 110 lbs. including 1,000 feet of cable



## C 135 + KS 135 C

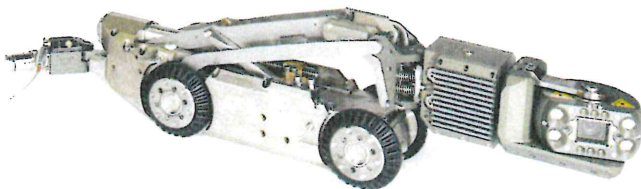
### C 135 Crawler - 6"-78" pipe diameter

- Steerable 4-wheel drive
- Electric lift with reverse camera
- Dual axis inclination sensor\*
- Reverse sensor synchronized with cable reel

### KS 135 C Camera

- 280° pan, infinite 360° rotation
- 10X optical zoom, manual & auto focus control
- Four long-range LEDs and 6 short-range LEDs
- Laser crack measurement\*

\* Requires PC with compatible inspection software



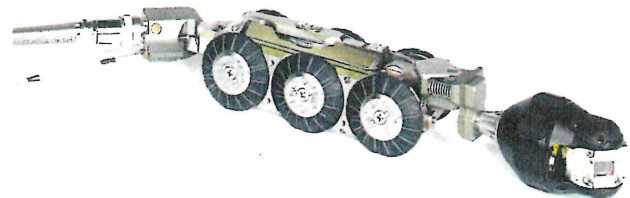
## C 100 + KS 60 DB

### C 100 Crawler - 4"-20" pipe diameter

- Automatic and manual steering function
- Mechanical height adjustment of camera
- Dual-axis inclination sensor\*
- Reverse sensor synchronized with cable reel

### KS 60 DB Camera

- Pan and tilt camera with infinite rotation
- Dual camera zoom, manual & auto focus control
- Distortion-free wide angle lens
- Laser crack measurement\*



www.rauschusa.com

Phone: 717 709 1005

Toll Free: 877 Rauschl

Email: reusa@rauschusa.com

# rausch<sub>USA</sub>